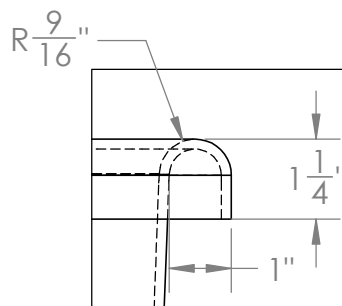
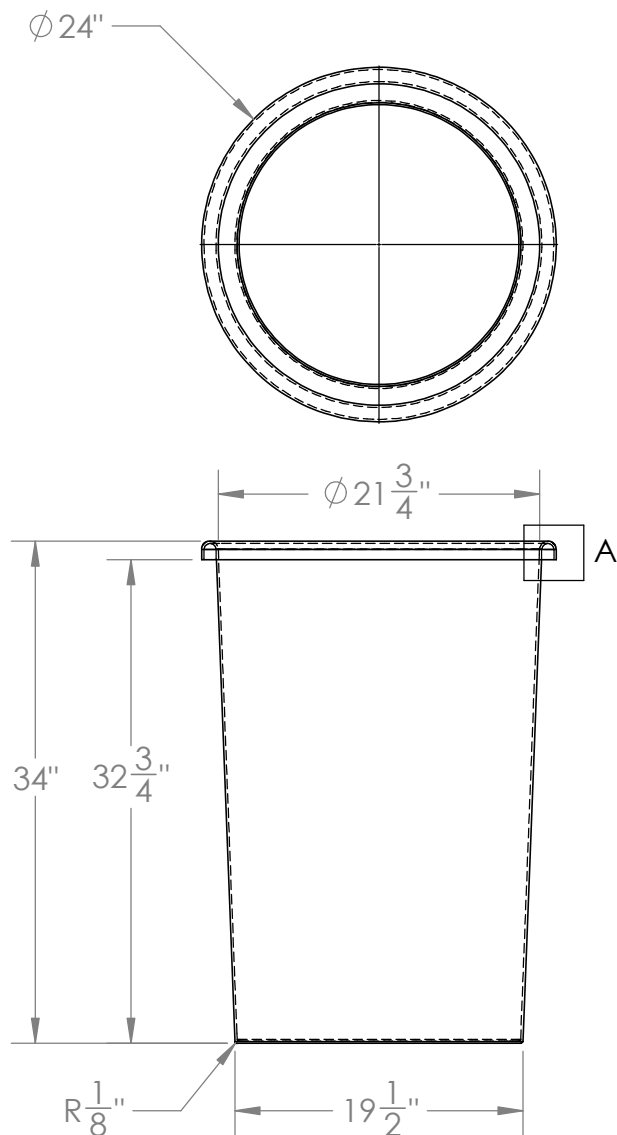
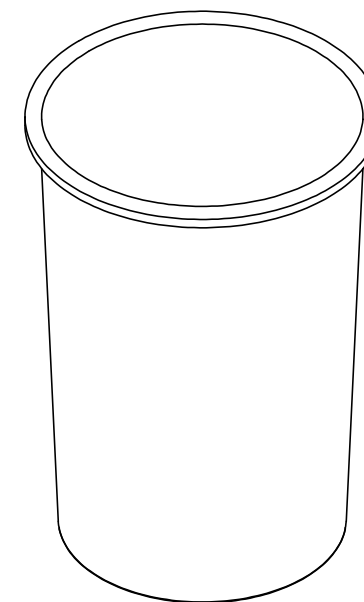


Catalog options:  
Cover #3009, Tank Stand #5061-Includes agitator column



DETAIL A



Tapered & Calibrated  
Polyethylene Tank w/ Cuff  
Type Flange #3055



|                      |             |                 |          |
|----------------------|-------------|-----------------|----------|
| STOCK NO.            | <b>3055</b> | REV             | <b>A</b> |
| DO NOT SCALE DRAWING |             | WEIGHT: 18 lbs. |          |

|   |                   |                              |              |
|---|-------------------|------------------------------|--------------|
| DIMENSIONS ARE IN INCHES<br>TOLERANCE: ± 1/4" |                   | NAME                         | DATE         |
| MATERIAL                                      | LLDPE - FDA resin | DRAWN                        | CDH 06/20/16 |
| CAPACITY                                      | 45 US gal.        | APPROVED                     | BAT 07/14/16 |
| GRADUATIONS                                   | 2-1/2 gal.        | COMMENTS:                    |              |
| NOMINAL WALL THICKNESS                        | 5/32"             | Translucent<br>UV Stabilized |              |

**PROPRIETARY AND CONFIDENTIAL**  
THE INFORMATION CONTAINED IN THIS DRAWING IS THE SOLE PROPERTY OF TAMCO. ANY REPRODUCTION IN PART OR AS A WHOLE WITHOUT THE WRITTEN PERMISSION OF TAMCO IS PROHIBITED.

MAX. OPERATING TEMP. 140°F  
INTERMITTENT SERVICE TO 160°F  
SEE CHEMICAL RESISTANCE  
CHART FOR COMPATIBILITY