



PP / PVDF

FLT Series Duplex Bag Filters

SINGLE AND DOUBLE LENGTH

KEY FEATURES

- PVC, CPVC or GFPP Housing with PVC or CPVC Valve Assembly
- No Line Shutdown for Bag Changeout
- Hand-Removable Cover
- In-Line or Loop Connections
- Built-In Mounting Platform
- Vent Valve on Cover

OPTIONS

- Pneumatic or Electric Actuation Valve Operation
- Vent Gauge with Gauge Guard
- Pressure Differential Gauges and Switches
- Flanged Connections

MATERIALS

- PVC Cell Class 12454 per ASTM D1784
- CPVC Cell Class 23447 per ASTM D1784
- GFPP Cell Class 85580 per ASTM D4101
- PVDF
- FPM and EPDM O-Ring Seals

TECHNICAL INFORMATION

PVC/CPVC



SELECTION CHART

SIZE	MATERIAL	PIPING CONNECTION	SEALS	FLOW RATE	PRESSURE RATING
Single Length 7" x 16" 2.5 sq ft	PVC	2" True Union	FPM or EPDM	50 GPM (clean bag)	150 PSI @ 70°F Non-Shock
	CPVC				
	GFPP	2" Threaded or Flanged			
Double Length 7" x 32" 4.4 sq ft	PVC	2" True Union		100 GPM (clean bag)	150 PSI @ 70°F Non-Shock
	CPVC	2" Threaded or Flanged			
	GFPP				100 PSI @ 70°F Non-Shock
	PVDF				

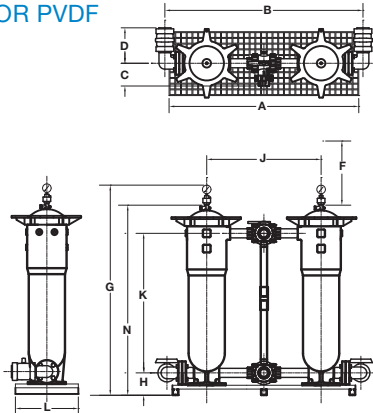
FLT Series Duplex Bag Filters

SINGLE AND DOUBLE LENGTH

TECHNICAL INFORMATION, CONTINUED

PARTS LIST – GFPP OR PVDF

1. Vent Valve with Optional Gauge
2. Inlet Connection
3. Valve Assembly – CPVC
4. Lever Handle
5. Filter Housing
6. Linkage Assembly
7. Outlet Connection
8. Base Assembly
9. Support Stand
10. Drain Valve
11. Differential Gauge Mounting Bracket – Optional



SPECIFICATIONS

- Bag Size:** Single length – 7" x 16", 2.0 square feet (Size 1); Double length – 7" x 32", 4.1 square feet, PP fabric and ring (Size 2)
- Basket Open Area Ratio:** Single length 28:1; Double length 60:1
- Piping Connections:** 2" 150# class flange
- Drain Connections:** 2" NPT
- Material of Construction:** GFPP and PVDF
- Seals:** FPM or EPDM
- Pressure Rating:** 150 PSI @ 70°F
- Nominal Bag Ratings:** 1, 5, 10, 25, 50, 100, 150, 200, 400, 600 and 800 microns. Universal seat accepts most standard 7" diameter bags
- Maximum Flow Rate:** 100 GPM clean bag
- Mounting Base:** Fiberglass
- Hardware:** Stainless steel

DIMENSIONS – INCHES / MILLIMETERS

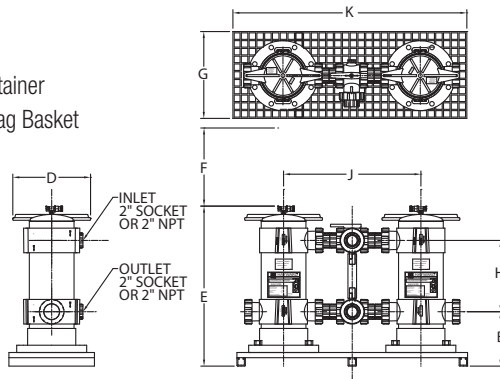
VESSEL SIZE	A in / mm	B in / mm	C in / mm	D in / mm	F* in / mm	G in / mm	H in / mm	J in / mm	K in / mm	L in / mm	N in / mm
Single	49.75 / 1264	51.96 / 1320	5.97 / 152	9.29 / 236	17.00 / 432	39.11 / 993	5.88 / 149	30.00 / 762	20.60 / 523	16.50 / 419	33.86 / 860
Double	49.75 / 1264	51.96 / 1320	5.97 / 152	9.29 / 236	33.00 / 838	55.11 / 1400	5.88 / 149	30.00 / 762	36.60 / 930	16.50 / 419	49.86 / 1266

Dimensions are subject to change without notice – consult factory for installation information

* Clearance from top for basket removal

PARTS LIST – PVC OR CPVC

1. Cover
2. O-Ring
3. Bag Retainer
4. Filter Bag Basket
5. Body



SPECIFICATIONS

- Material of Construction:** PVC or CPVC
- Piping Connections:** True Union 2" Socket, NPT Threaded or Optional 150# ANSI Flanged
- Drain Connections:** True Union 2" Socket, NPT Threaded or Optional 150# ANSI Flanged
- Bag Size:** Single Length – Size 1, 7" x 16"; Double Length – Size 2, 7" x 32"
- Pressure Rating:** 150 PSI at 70°F Non-Shock
- Seals:** FPM or EPDM
- Nominal Bag Ratings:** PP Bags, 1, 5, 10, 25, 50, 100, 150, 200, 400, 600 and 800 microns. Universal seat accepts most standard single and double length bags
- Flow Rate:** With clean bag, double length 100 GPM, single length 50 GPM

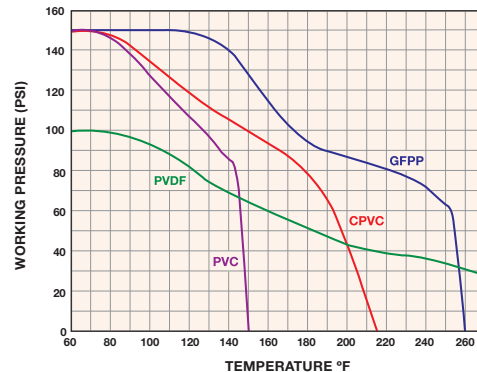
DIMENSIONS – INCHES / MILLIMETERS

VESSEL SIZE	B in / mm	D in / mm	E in / mm	F in / mm
Single	10.50 / 267	15.00 / 381	30.86 / 784	16.00 / 406
Double	10.50 / 267	15.00 / 381	46.86 / 1190	32.00 / 813

VESSEL SIZE	G in / mm	H in / mm	J in / mm	K in / mm
Single	16.75 / 425	13.75 / 349	26.50 / 673	45.13 / 1146
Double	16.75 / 425	29.75 / 756	26.50 / 673	45.13 / 1146

Dimensions are subject to change without notice – consult factory for installation information

OPERATING TEMPERATURE / PRESSURE



Hayward is a registered trademark of Hayward Industries, Inc. © 2011 Hayward Industries, Inc.

Contact Hayward Flow Control with questions: 1-888-429-4635 • Fax: 1-888-778-8410 • One Hayward Industrial Drive • Clemmons, NC 27012 • USA
Visit us at: www.haywardflowcontrol.com • E-mail: hflow@haywardnet.com