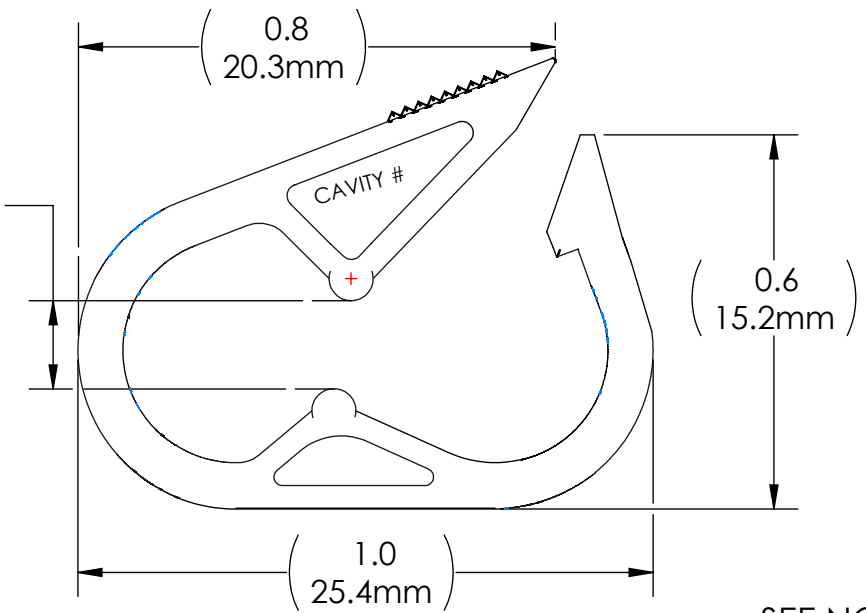
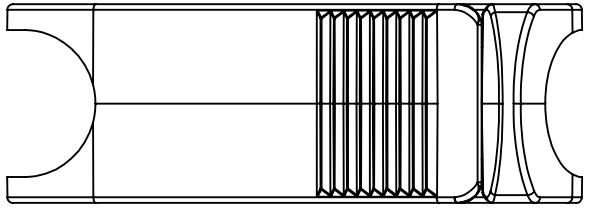
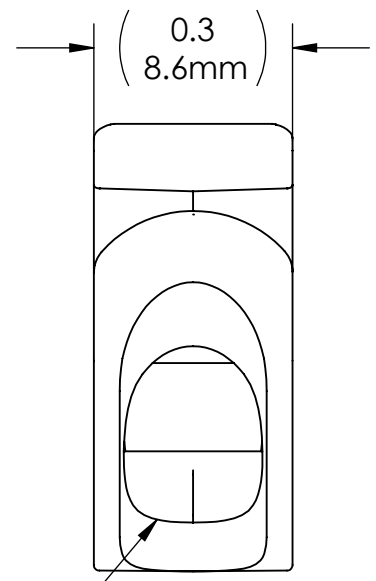


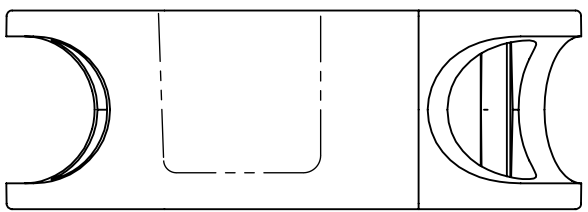
Revision History			
REV	DESCRIPTION (ECO)	DATE	APPROVED
S	UPDATE MAT. SPEC. ECO 5404	10/01/12	AK
T	UPDATE TO STANDARD DECIMAL PLACES & CLOSED GAP TO STANDARD 0 MINIMUM ECO 5783	8/29/13	AK



0.000 - 0.023  
(0 - 0.584mm)  
CLOSED POSITION

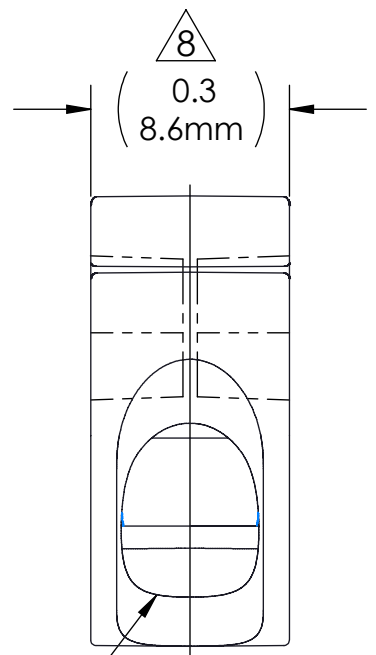


SEE NOTE 3.

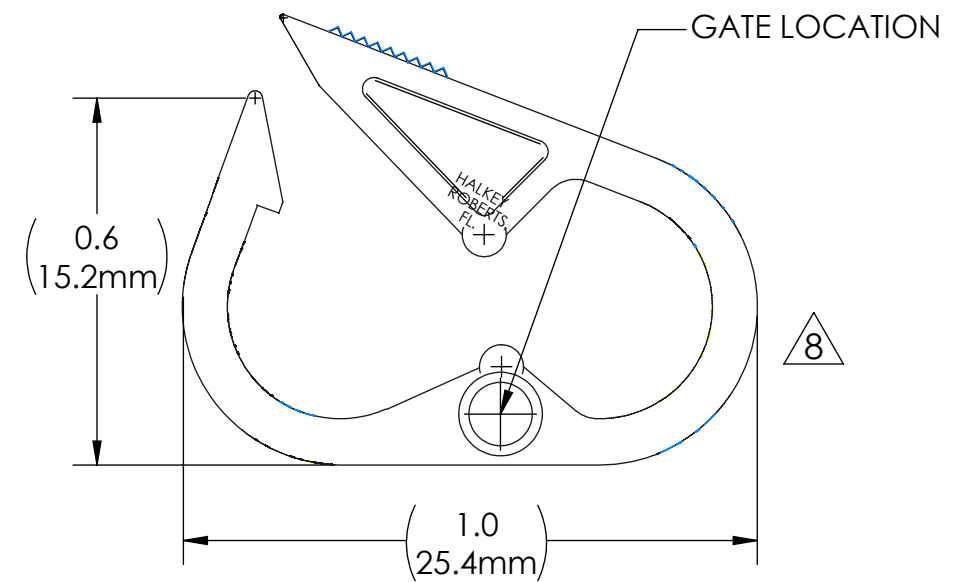
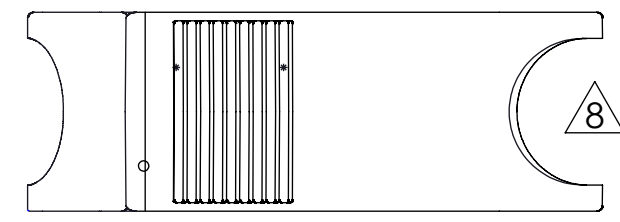


NOTES:

1. MATERIAL: GAMMA STABLE POLYPROPYLENE PD626, OR P5M6K-080
2. SUFFIX INDICATES COLOR.  
NO SUFFIX - WHITE  
B - BLUE  
R - RED  
Y - YELLOW  
BK - BLACK  
BN - BROWN
3. MAX TUBING DIA. ( .25 ).
4. CRITICAL DIMENSIONS ARE CIRCLED AND SUBJECT TO INSPECTION.
5. DIMENSIONS IN PARENTHESES ARE FOR REFERENCE ONLY.
6. ALL DIMENSIONS ARE IN INCHES WITH NOMIMIAL DIMENISON IN MILLIMETERS BELOW.
7. HR TUBING CLAMPS ARE SINGLE PATIENT USE MEDICAL COMPONENTS INTENDED TO BE INCLUDED AS PART OF THE FINISHED DEVICE, I.E. IV ADMINISTRATION SETS. HR TUBING CLAMPS ARE MANUFACTURED TO HR SPECIFICATIONS, SOLD BULK, NON-STERILE TO OEMS. BECAUSE THE CONFIGURATIONS OF IV TUBING VARY DRAMATICALLY, HR CANNOT MAKE ANY PARTICULAR CLAIMS. CUSTOMERS MUST VALIDATE CLAMPS FOR THEIR INTENDED USE, ENSURING THAT THE CLAMPS EFFECTIVELY OCCLUDE THE INHERENT VARIATION OF THE PARTICULAR TUBING EMPLOYED BY THE CUSTOMER AGAINST THE CLOSED GAP RANGE PROVIDED ON HR'S SPECIFICATIONS. OEM MANUFACTURING PROCESSES (SUCH AS ASSEMBLY PROCESSES, PACKAGING AND STERILIZATION) CAN SIGNIFICANTLY ALTER THE CLAMPS' FUNCTIONALITY; THEREFORE, HR CANNOT GUARANTEE THE PERFORMANCE OF THE FINAL CONFIGURATION.



SEE NOTE 3.



NOTES:

DRAWING VIEWS OF ALTERNATE RADIUS CONFIGURATION

QUALITY CRITERIA

O.D. FLASH 0.015 MAX. (0.4MM)
GATE VESTIGE 0.01 MAX. (0.3MM)
EMBEDDED PARTICLES, BUBBLES, SPOTS, STAINS: 0.3mm <sup>2</sup> MAX. NO MORE THAN 5 PER PART.

DRAWN BY	M.S.	DATE	10-21-94
APPROVED BY	J.W.	DATE	10-21-94
MATERIAL	SEE NOTE		
FINISH			
UNLESS OTHERWISE SPECIFIED:		THIRD ANGLE PROJECTION	
DIMENSIONS ARE IN INCHES			
TOLERANCES:			
ANGULAR: ±1°			
TWO PLACE DECIMAL ±.01			
THREE PLACE DECIMAL ±.005			

**Halkey-Roberts**

TITLE **TUBING CLAMP, SMALL**

SIZE **B** DRAWING NO. **C340TCSPX** REV **T**

SCALE **DO NOT SCALE DRAWING** SHEET **1 OF 1**

**MOLDED PARTS:**  
GATES, PARTING LINES, AND FLASH PER QUALITY CRITERIA

**PROPRIETARY AND CONFIDENTIAL**  
THE INFORMATION CONTAINED IN THIS DRAWING IS THE SOLE PROPERTY OF HALKEY-ROBERTS CORPORATION, ST. PETERSBURG, FL. ANY REPRODUCTION IN PART OR AS A WHOLE WITHOUT THE WRITTEN PERMISSION OF HALKEY-ROBERTS CORPORATION IS PROHIBITED.