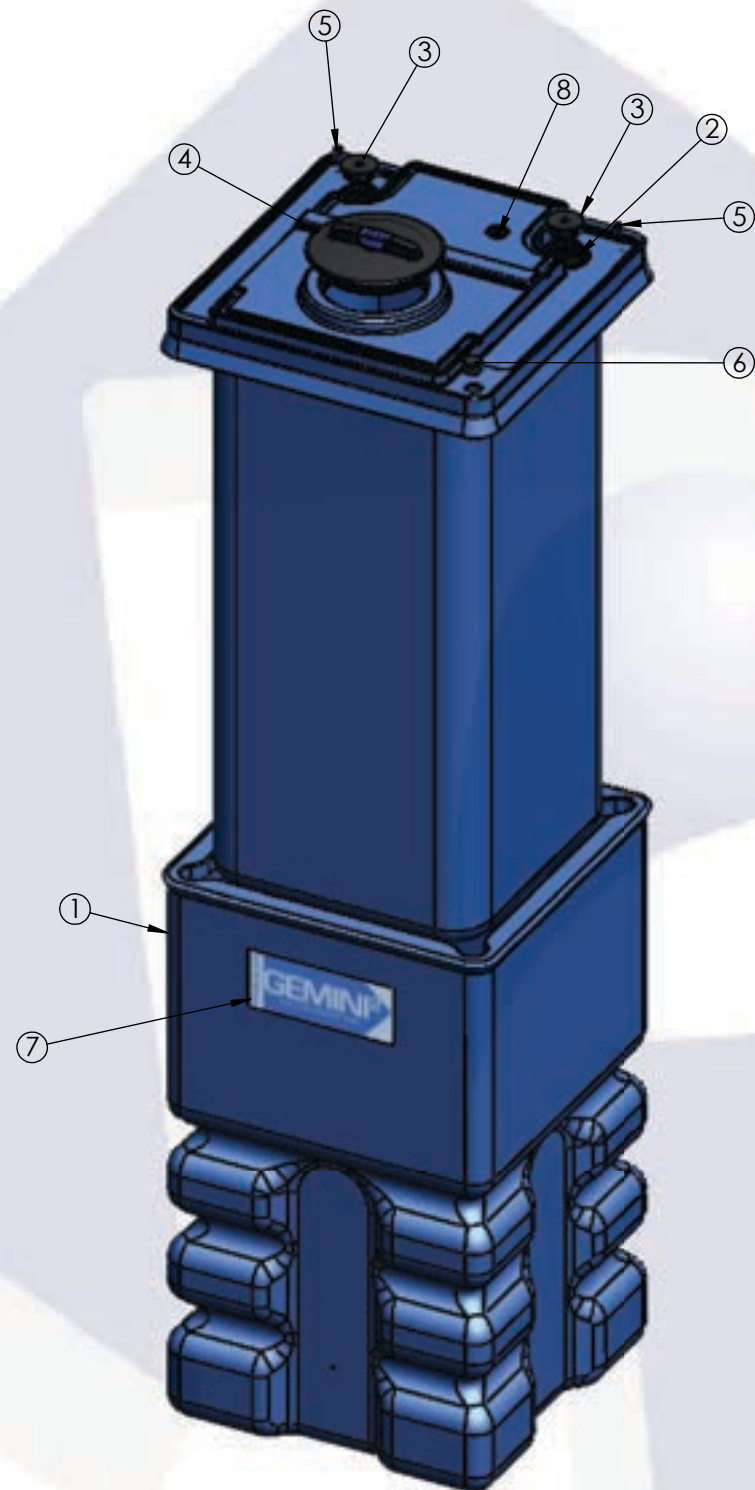




DETAIL C  
SCALE 1 : 2



**ISOMETRIC VIEW  
(ASSEMBLED)**



**ISOMETRIC VIEW  
(EXPLODED)**

95 GALLON GEMINI <sup>2</sup>	PART NUMBER	
	BLUE	NATURAL
LPE (1.5)	01-36563	01-36567
LPE (1.9)	01-36571	01-36575
XLPE (1.5)	N/A	01-36580
XLPE (1.9)	N/A	01-36581

TOP LEVEL ASSEMBLY		
ITEM NO.	DESCRIPTION	Default/QTY.
1	95G GEMINI <sup>2</sup> , SECONDARY TANK	1
2	Ø2" FNPT SPIN WELD FITTING, PE	2
3	Ø2" MPT PLUG, PE, BLACK	2
4	Ø8" VENTED TWIST LID ASSEMBLY	1
5	RED CAPLUG / O-RING SUB-ASSY	2
6	Ø1" PLUG, MPT, PE, BLACK	1
7	GEMINI <sup>2</sup> MOLD IN GRAPHIC	1
8	Ø1-5/8" CAPLUG / GROMMET ASSY	1
9	95G GEMINI <sup>2</sup> , PRIMARY TANK	1

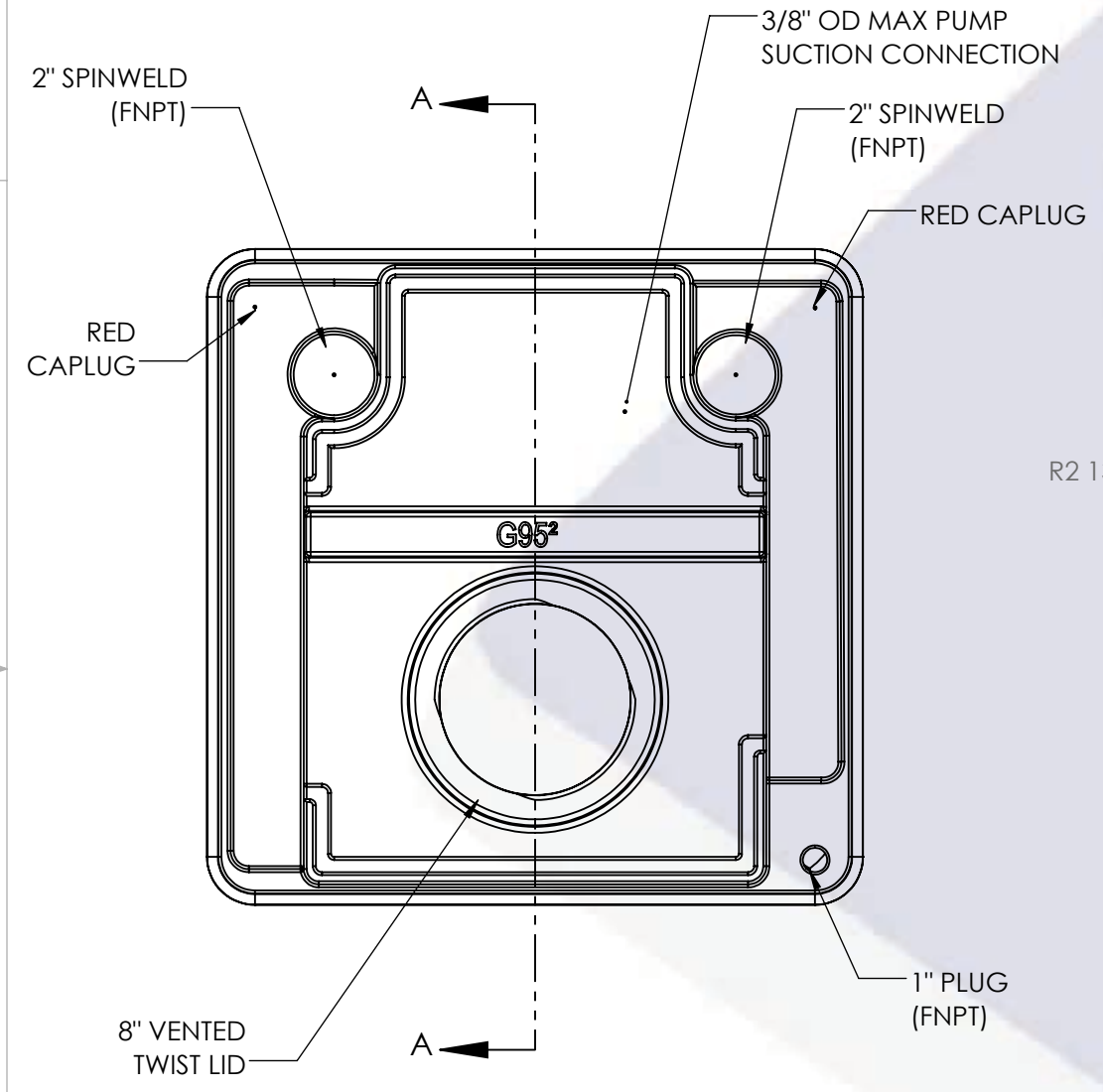
- NOTES:
1. CAPACITY: 95 GAL. NOMINAL
  2. TANK MATERIAL: LLDPE W/ UV INHIBITOR
  3. GASKET:
  4. SERVICE PRESSURE: ATMOSPHERIC

**PROPRIETARY AND CONFIDENTIAL**  
THE INFORMATION CONTAINED IN THIS DRAWING IS THE SOLE PROPERTY OF PEABODY ENGINEERING. ANY REPRODUCTION IN PART OR AS A WHOLE WITHOUT THE WRITTEN PERMISSION OF PEABODY ENGINEERING IS PROHIBITED.

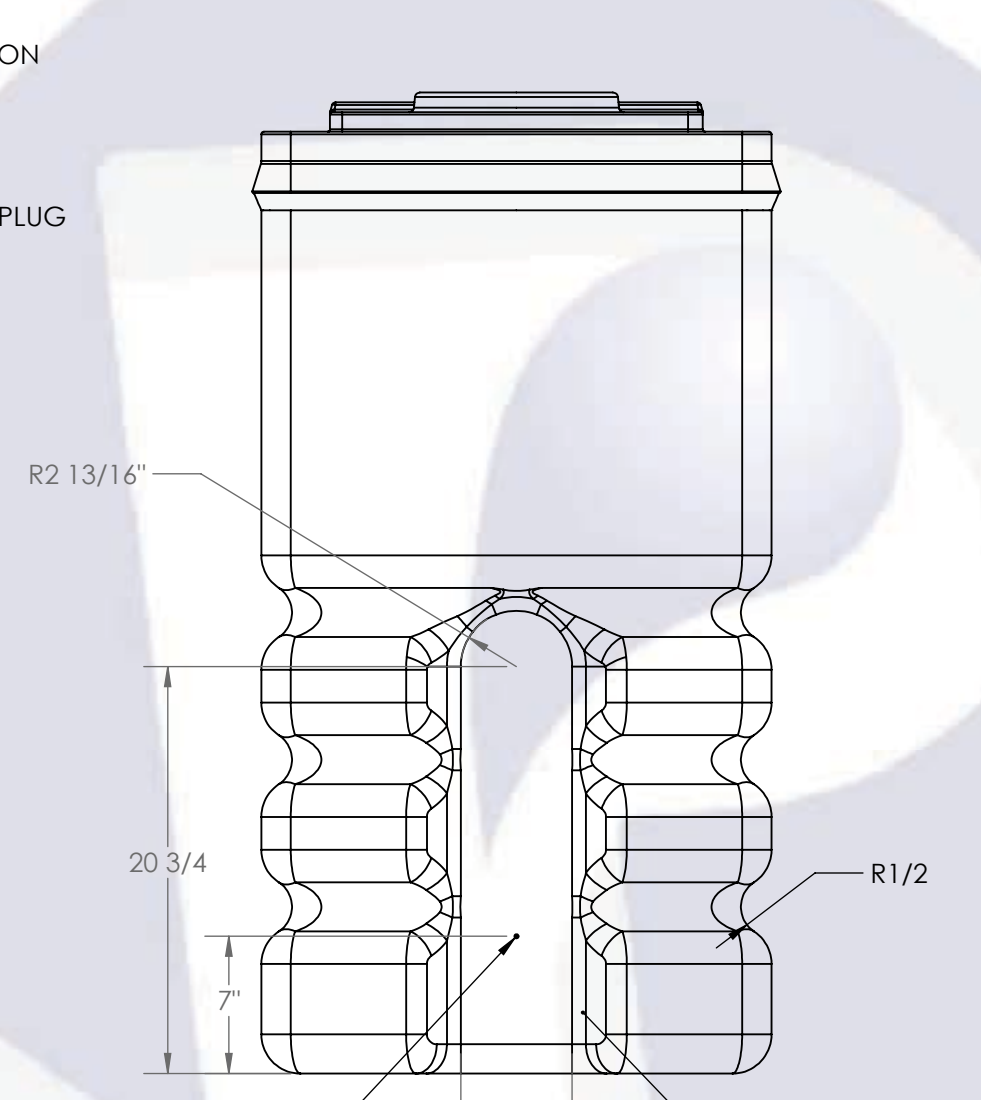
UNLESS OTHERWISE SPECIFIED:		NAME	DATE							
DIMENSIONS ARE IN INCHES TOLERANCES: ±1/4" ANGULAR: ±.5° ONE PLACE DECIMAL: ±.25 TWO PLACE DECIMAL: ±.125 THREE PLACE DECIMAL: ±.063		DRAWN	EDP 9/24/25		PROJECT: <b>GEMINI DUAL CONTAINMENT® TANKS</b>					
TANK MATERIAL: <b>LPE</b>	INNER TANK S/N:	CHECKED		CUSTOMER: <b>PEABODY STANDARD</b>						
OUTER TANK S/N:	CUSTOMER PO#	ENG APPR.		SITE/LOCATION: <b>-</b>						
DO NOT SCALE DRAWING		MFG APPR.		SALES ORDER: <b>SEE TABLE</b>						
<p><b>ALTERNATIVE VERSIONS</b></p> <p><b>MATERIALS: XLPE, PPL, PVDF</b> <b>COLORS: NATURAL, BLUE OR BLACK</b> <b>AVAILABLE WITH FRP WRAP</b></p> <p><b>CALL FOR PART NUMBERS</b></p>		Q.A.		<table border="1"> <tr> <td>SIZE</td> <td>DESC.</td> <td>REV.</td> </tr> <tr> <td><b>B</b></td> <td><b>95 GALLON GEMINI<sup>2</sup> TANK, 26" X 26" X 50"</b></td> <td><b>A</b></td> </tr> </table>	SIZE	DESC.	REV.	<b>B</b>	<b>95 GALLON GEMINI<sup>2</sup> TANK, 26" X 26" X 50"</b>	<b>A</b>
SIZE	DESC.	REV.								
<b>B</b>	<b>95 GALLON GEMINI<sup>2</sup> TANK, 26" X 26" X 50"</b>	<b>A</b>								
		SCALE: 1:14		SHEET 1 OF 2						

8 7 6 5 4 3 2 1

D C B A



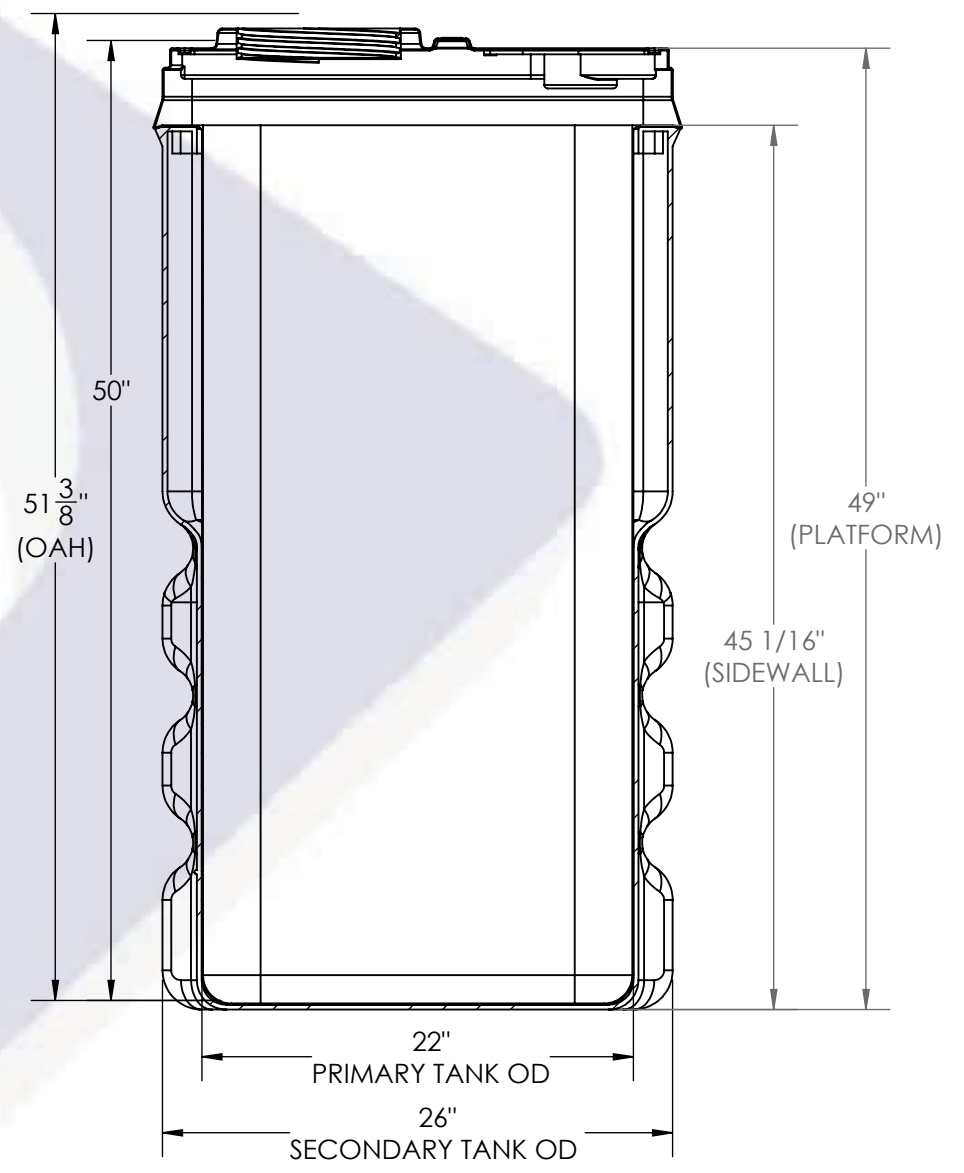
**PLAN VIEW**



**ELEVATION VIEW**  
SCALE 1:10

NOTE: ALLOWS HAYWARD FITTING BFA IS 2" BHF OR NORWESCO FITTING IS 2" BHF

NOTE: 45° DRAFT, TYP. ALL SIDES



**SECTION A-A**  
SCALE 1:10



PROJECT: 95g Gemini<sup>2</sup> CUSTOMER

SCALE: 1:8

SHEET 2 OF 2