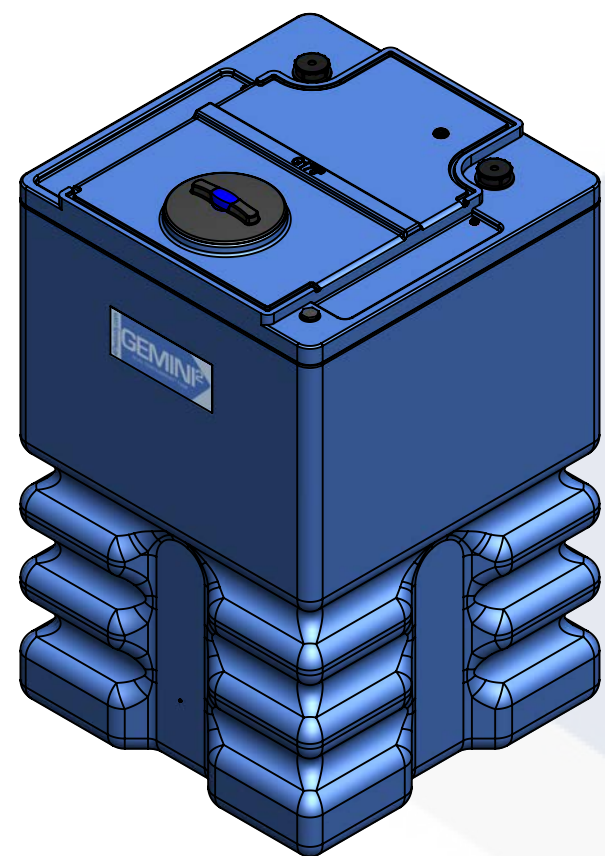
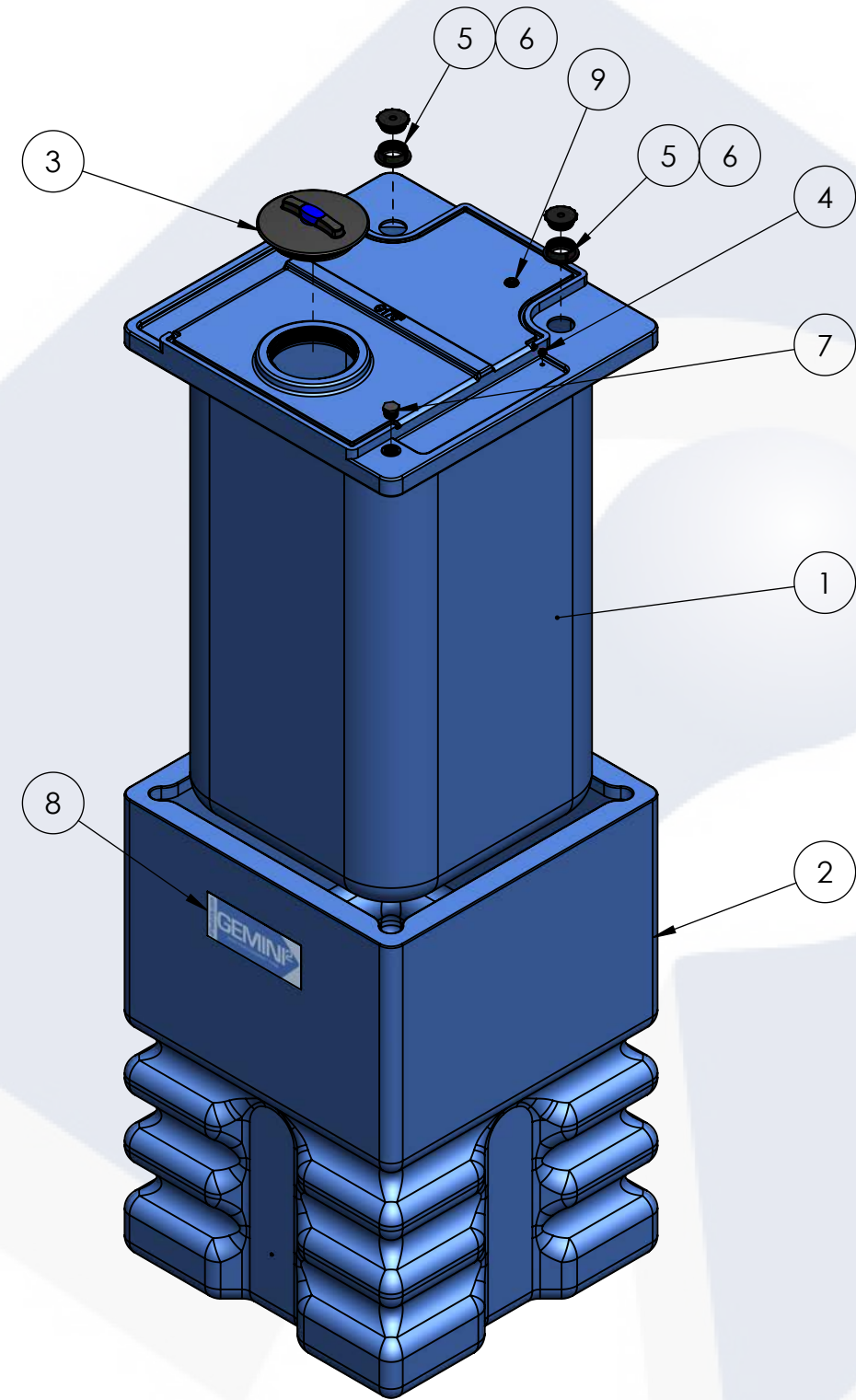


175 GALLON GEMINI ²	PART NUMBER	
	BLUE	NATURAL
LPE (1.5)	01-33086	01-33088
LPE (1.9)	01-33087	01-33089
XLPE (1.5)	N/A	01-33091
XLPE (1.9)	N/A	01-33093

ALTERNATIVE MATERIALS, COLOR, AND ACCESSORIES ARE AVAILABLE. CALL FOR ADDITIONAL INFO



**ISOMETRIC VIEW
(ASSEMBLED)**



**ISOMETRIC VIEW
(EXPLODED)**

TOP LEVEL ASSEMBLY		
ITEM NO.	DESCRIPTION	QTY.
1	175G GEMINI ² , PRIMARY TANK	1
2	240G GEMINI ² , SECONDARY TANK	1
3	Ø8" VENTED TWIST LID ASSEMBLY	1
4	RED CAPPLUG / O-RING SUB-ASSY	2
5	Ø2" FNPT SPIN WELD FITTING, PE	2
6	Ø2" MPT PLUG, PE, BLACK	2
7	Ø1" PLUG, MPT, PE, BLACK	1
8	GEMINI ² MOLD IN LOGO	1
9	1-5/8" CAPPLUG / GROMMET SUB-ASSY	1

- NOTES:**
- CAPACITY: 175 GAL. NOMINAL
 - TANK MATERIAL: LLDPE W/ UV INHIBITOR
 - GASKET: EPDM
 - SERVICE PRESSURE: ATMOSPHERIC

PROPRIETARY AND CONFIDENTIAL
 THE INFORMATION CONTAINED IN THIS DRAWING IS THE SOLE PROPERTY OF PEABODY ENGINEERING. ANY REPRODUCTION IN PART OR AS A WHOLE WITHOUT THE WRITTEN PERMISSION OF PEABODY ENGINEERING IS PROHIBITED.

UNLESS OTHERWISE SPECIFIED:
 DIMENSIONS ARE IN INCHES
 TOLERANCES: ±1/4"
 ANGULAR: ± .5°
 ONE PLACE DECIMAL: ± .25
 TWO PLACE DECIMAL: ± .125
 THREE PLACE DECIMAL: ± .063

TANK MATERIAL: **LPE**

INNER TANK S/N:

OUTER TANK S/N:

CUSTOMER PO#

DO NOT SCALE DRAWING

	NAME	DATE
DRAWN	SMF	06/01/22
CHECKED		
ENG APPR.		
MFG APPR.		
Q.A.		

PEABODY engineering

PROJECT: **GEMINI DUAL CONTIANMENT TANKS**

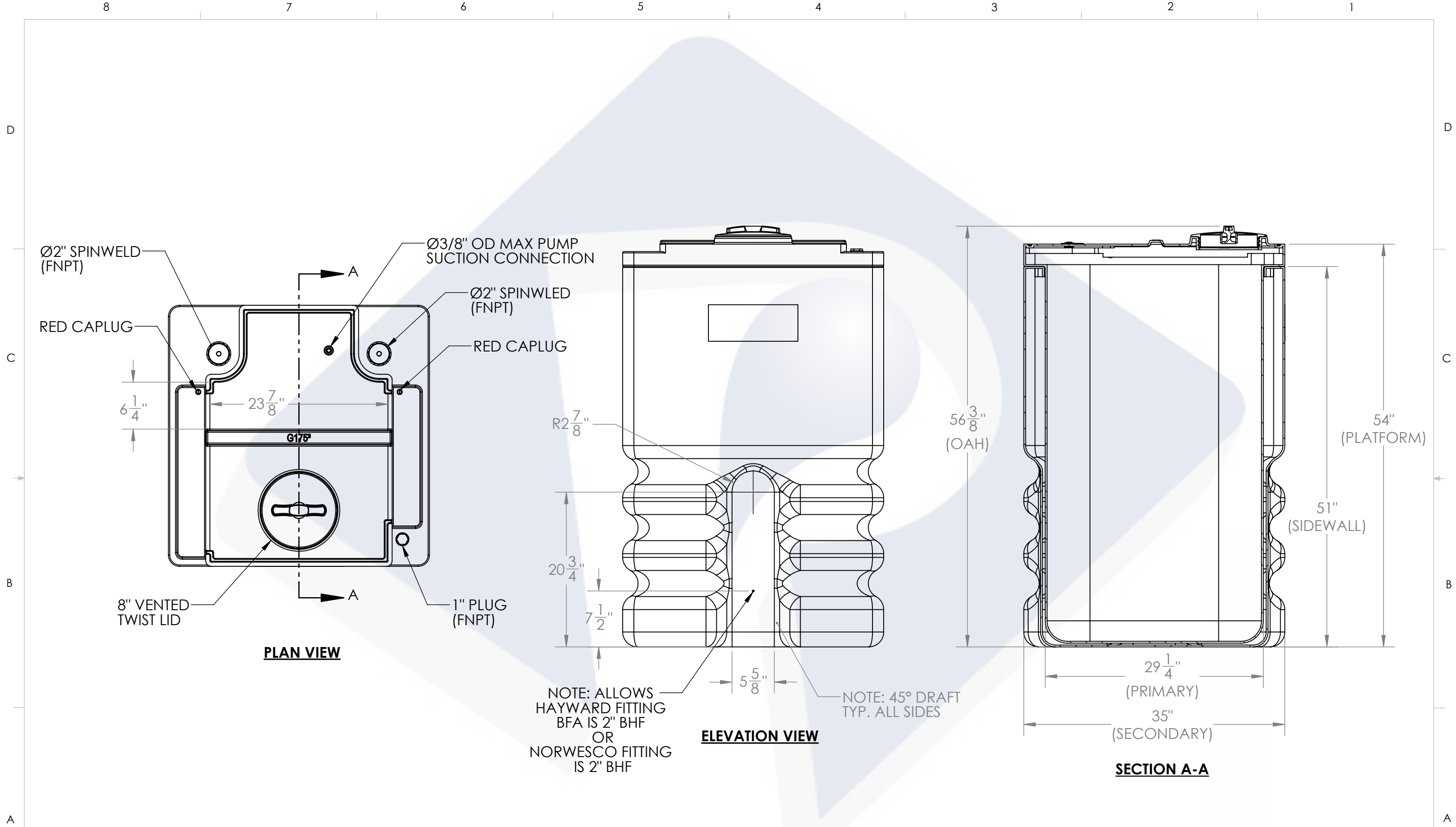
CUSTOMER: **PEABODY STANDARD**

SITE/LOCATION: **-**

SALES ORDER: **SEE TABLE**

SIZE	DESC.	REV.
B	175 GALLON GEMINI² TANK, 35" X 35" X 57"	B

SCALE: 1:16 SHEET 1 OF 2



PROJECT:
175G Gemini², CUSTOMER Print REV-B2

SCALE: 1:12 REV. B SHEET 2 OF 2