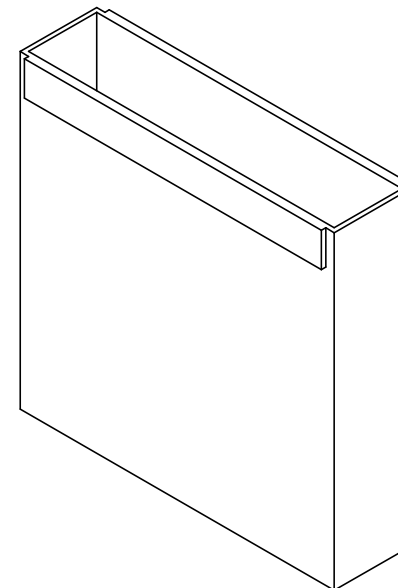
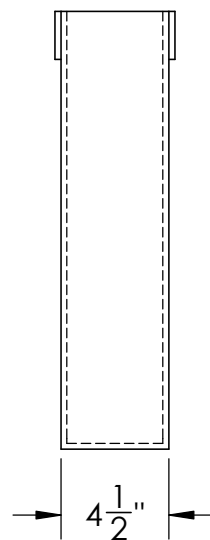
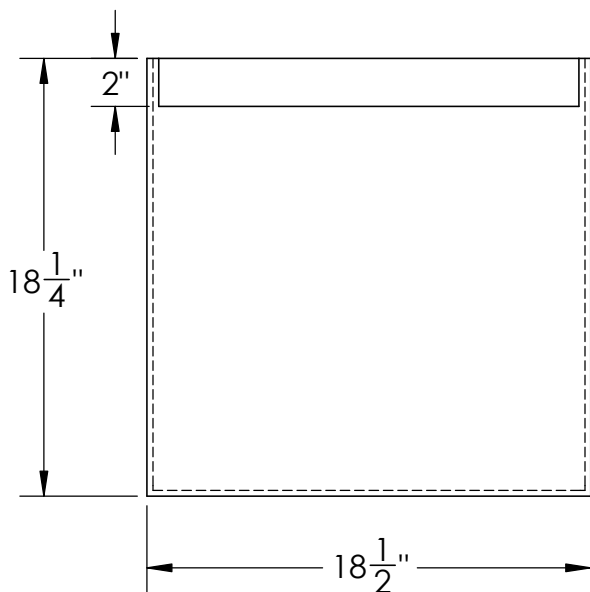


Catalog Options:  
Cover #11034



Polyethylene Welded Tank  
#11200



1390 Neubrecht Road  
Lima, Ohio 45801

STOCK NO.

11200

REV

A

DO NOT SCALE DRAWING

WEIGHT: 9 lbs.

**PROPRIETARY AND CONFIDENTIAL**

THE INFORMATION CONTAINED IN THIS  
DRAWING IS THE SOLE PROPERTY OF  
TAMCO. ANY REPRODUCTION IN PART  
OR AS A WHOLE WITHOUT THE WRITTEN  
PERMISSION OF TAMCO IS PROHIBITED.

MAX. OPERATING TEMP. 200°F  
SEE CHEMICAL RESISTANCE  
CHART FOR COMPATABILITY

DIMENSIONS ARE IN INCHES  
TOLERANCE:  $\pm 1/4$ "

MATERIAL  
Welded PE

CAPACITY  
6 US gal.

GRADUATIONS  
NO

NOMINAL WALL THICKNESS  
1/4"

DRAWN

NAME

JMP

DATE

6/24/19

APPROVED

COMMENTS:

Welded  
Construction