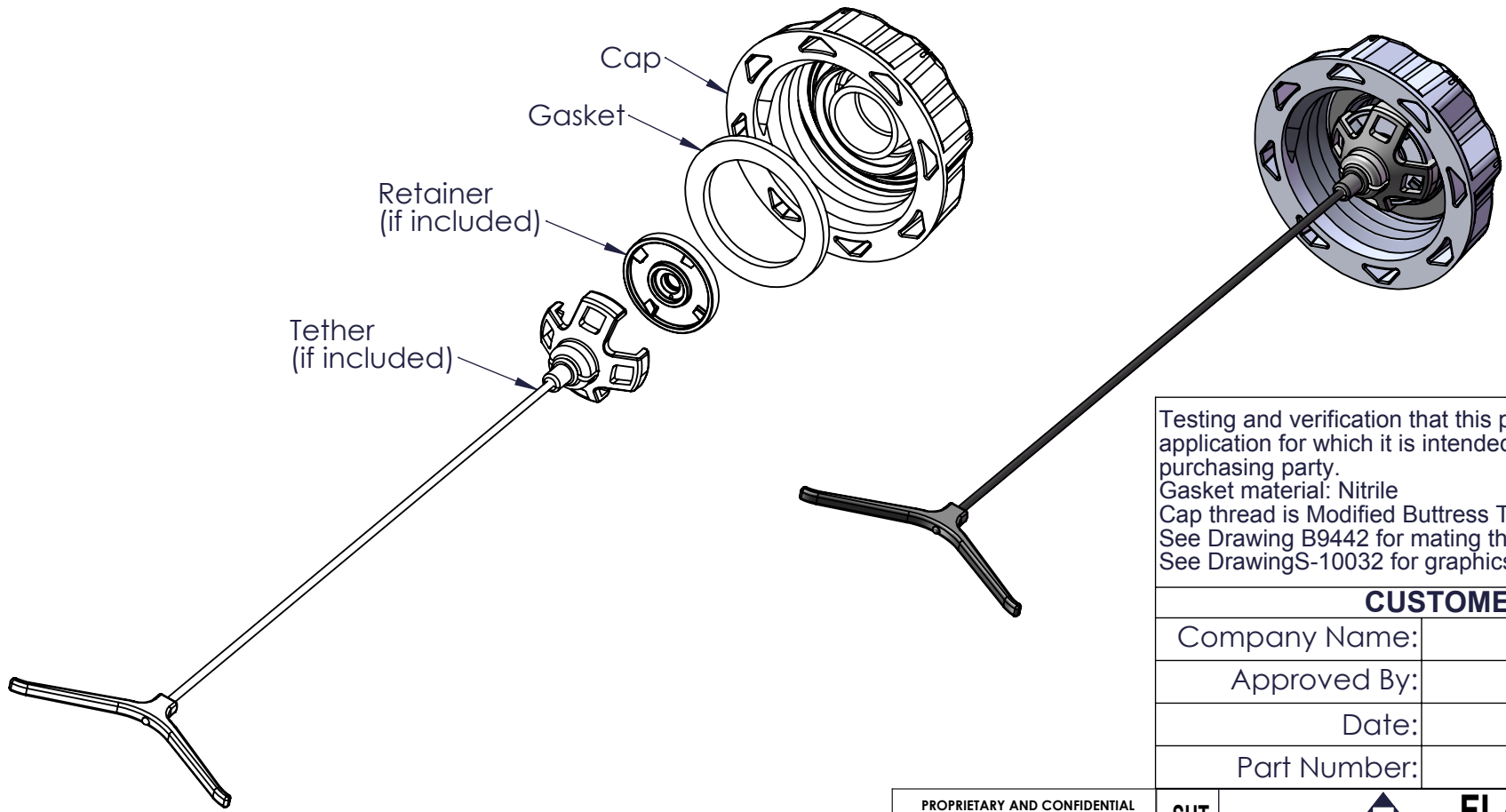
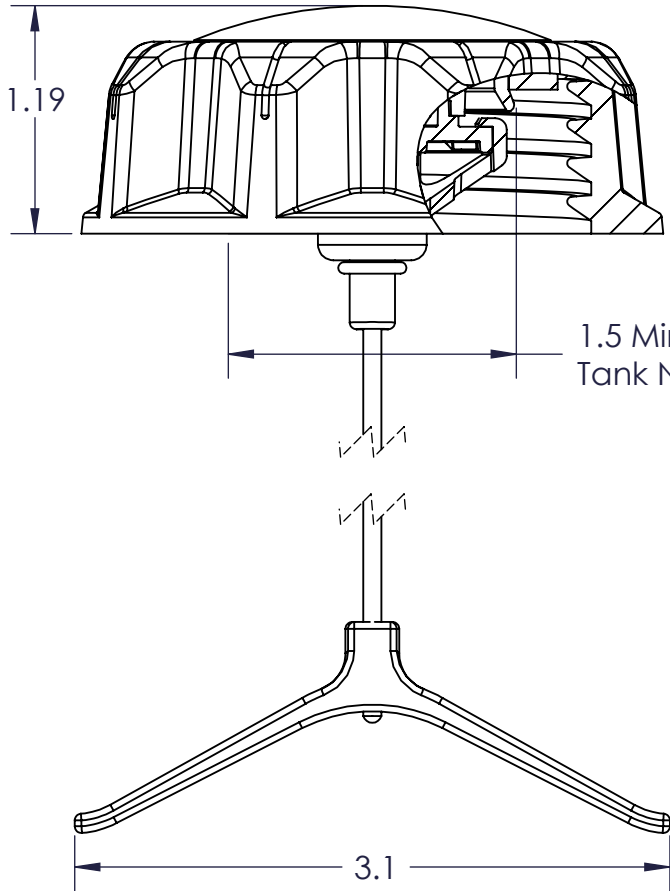


Part Number	Description	Retainer	Tether
080050BE	No Vent, No Graphics, Nylon 6/6, BLK	No	No
080052BE	No Vent, Molded DFO, Nylon 6/6, YLW	No	No
080058BE	No Vent, 8" THR, No Graphics, Nylon 6/6, BLK	Yes	8"
080060BE	No Vent, 8" THR, Molded DFO, Nylon 6/6, YLW	Yes	8"
080068AE	No Vent, No Graphics, HDPE, BLK	No	No
080069AE	No Vent, 8" THR, No Graphics, HDPE, BLK	Yes	8"
080100AE	No Vent, No Graphics, PP, BLK	No	No
080129AE	No Vent, Printed DFO (BLK), Nylon 6/6, YLW	No	No
080130AE	No Vent, 4" THR, Printed DFO (BLK), Nylon 6/6, YLW	Yes	4"
080136AE	No Vent, 8" THR, Printed WFO (WHT), HDPE 6/6 BLK	Yes	8"
080138AE	No Vent, 4" THR, Printed WFO (WHT), HDPE BLK	Yes	4"



Testing and verification that this product is appropriate for the application for which it is intended is the sole responsibility of the purchasing party.
Gasket material: Nitrile
Cap thread is Modified Buttress Thread 2.25" - 5 TPI
See Drawing B9442 for mating thread specifications.
See DrawingS-10032 for graphics options.

CUSTOMER APPROVAL

Company Name:	
Approved By:	
Date:	
Part Number:	

E	Added 080138AE	9-1-10	RDL	DJH
D	Added 080136AE	1-29-10	RDL	DJH
C	Added 080129AE, & 080130AE	1-4-10	RDL	DJH
B	ECR 8214,8204,8201,8196: PN Changes due to Gasket revision.	7-16-09	RDL	DS
A	Released for Production	4-7-08	RDL	DJH
REV.	DESCRIPTION	DATE	BY	APR
REVISIONS				

PROPRIETARY AND CONFIDENTIAL
THE INFORMATION CONTAINED IN THIS DRAWING IS THE SOLE PROPERTY OF FLAMBEAU, Inc. ANY REPRODUCTION IN PART OR AS A WHOLE WITHOUT THE WRITTEN PERMISSION OF FLAMBEAU, Inc. IS PROHIBITED.

DIMENSIONS ARE IN INCHES
TOLERANCES:
FRACTIONAL ± 1/64"
ANGULAR: MACH ± .5 BEND ± TWO PLACE DECIMAL ± .010"
THREE PLACE DECIMAL ± .005"
FOUR PLACE DECIMAL ± .001"

SHT	FLAMBEAU INC. 911 LYNN AVENUE BARABOO, WI 53913 PH.(608)356-5551		
1	Scale: None	W.O. No: - - -	Drawn By: RDL Date: 6-19-08
	Mold No: NA	FPN: See Table	Chk'd By: Date:
	Mat'l: NA	Shrink: NA	Chd'd By: Date:
OF	Description: 2.25" Non-Vented Fluids Cap Assy		
1	Customer: Flambeau Fluid Systems		Drawing #: S-10034