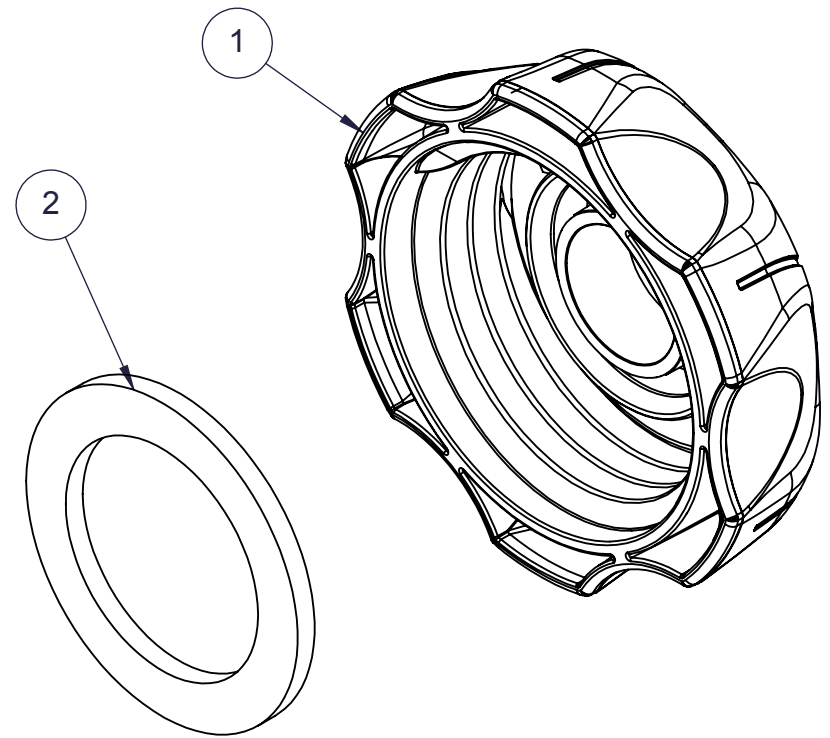
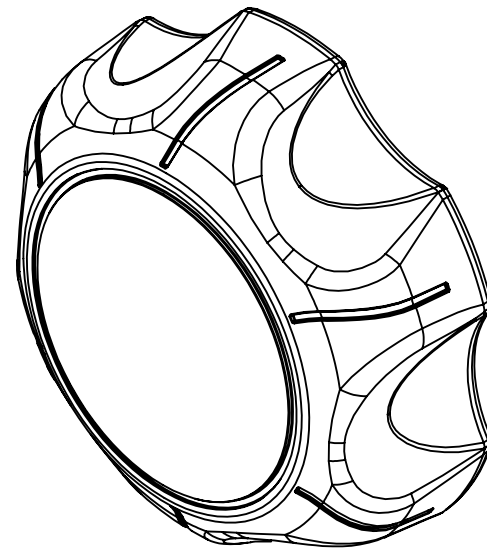


SECTION A-A



- NOTES:
1. CAP THREAD IS MODIFIED BUTTRESS THREAD 2.25" - 5 TPI
 2. SEE DWG S-10307 FOR MATING THREAD SPECIFICATIONS.
 3. TESTING AND VERIFICATION THAT THIS PRODUCT IS APPROPRIATE FOR THE APPLICATION FOR WHICH IT IS INTENDED IS THE SOLE RESPONSIBILITY OF THE PURCHASING PARTY.

REVISIONS					
REV	ECR	DESCRIPTION	DATE	BY	APR
A	NPN	RELEASED FOR PRODUCTION	10-17-18	CRW	PAM
B	ECR	Item 2 462212A was 468834A	03-15-19	CRW	DB

2	462212A	462212	GASKET		1	
1	6825	S-10851	PDM-00100 2.25 Cap 6 lobe unvented		1	
ITEM	FPN	DWG #	DESCRIPTION		QTY	
<div>PROPRIETARY AND CONFIDENTIAL</div> <div>THE INFORMATION CONTAINED IN THIS DRAWING IS THE SOLE PROPERTY OF FLAMBEAU, INC. ANY REPRODUCTION IN PART OR AS A WHOLE WITHOUT THE WRITTEN PERMISSION OF FLAMBEAU, INC. IS PROHIBITED.</div>		SHT	<div><div>F</div><div>FLAMBEAU, INC.</div></div>			
						1
		OF	SCALE: 1:1		BFI NO: NA	DRAWN BY: ANA DATE: 10-15-18
			MOLD NO: 6825	MAT'L: NA	FPN: 080293AE	
<div>DIMENSIONS ARE IN INCHES.</div> <div>THE FOLLOWING TOLERANCES APPLY UNLESS OTHERWISE SPECIFIED</div> <div>ANGULAR: ±3°</div> <div>TWO PLACE x.xx ±.01"</div> <div>THREE PLACE x.xxx ±.005"</div> <div>DIMENSIONS IN PARENTHESIS () ARE FOR REFERENCE ONLY.</div>		1	DESCRIPTION:			
		2.25" UNVENTED CAP, PLAIN - BLACK				
		CUSTOMER: Flambeau Fluid Systems		DWG NO: 080293		