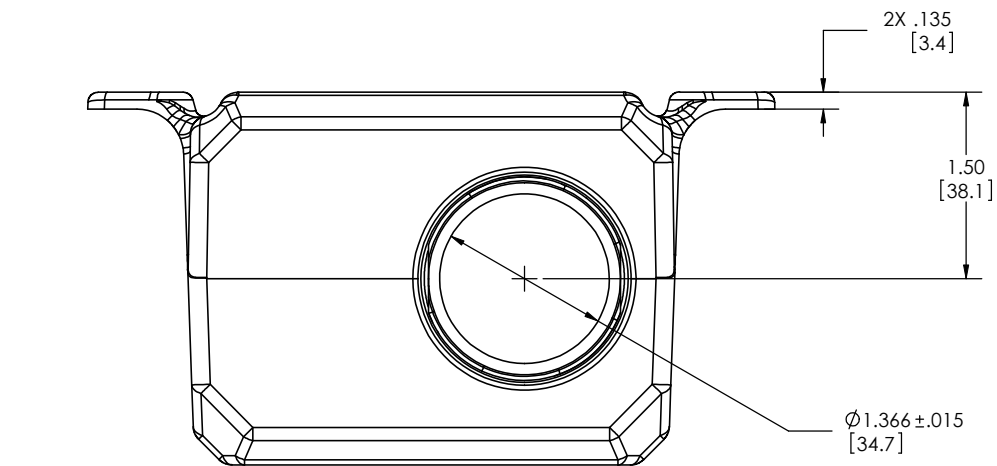
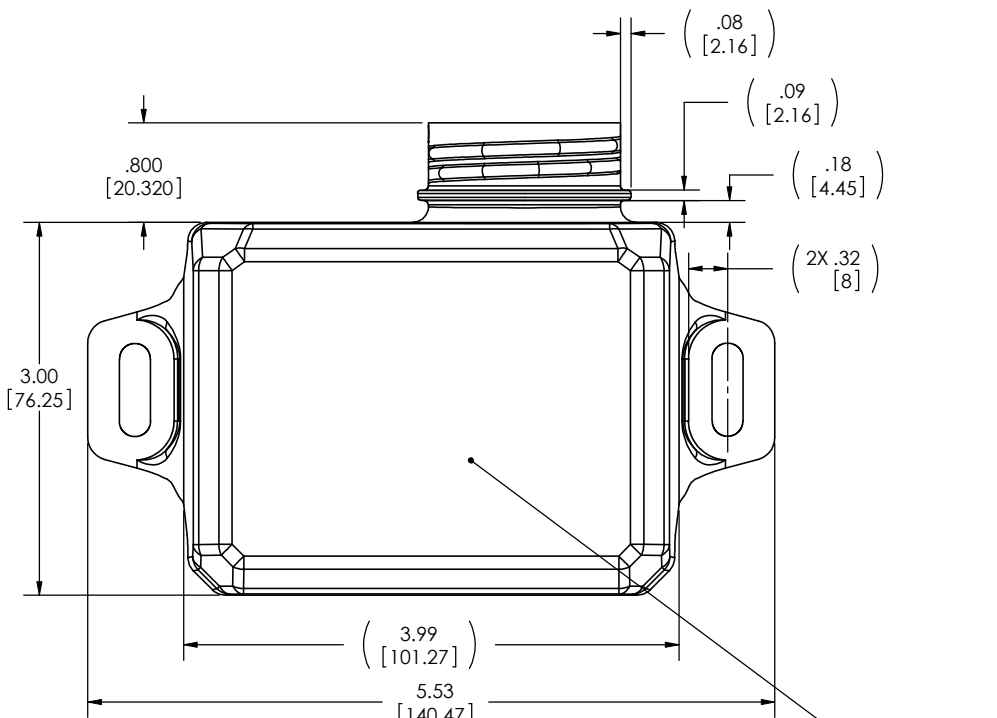


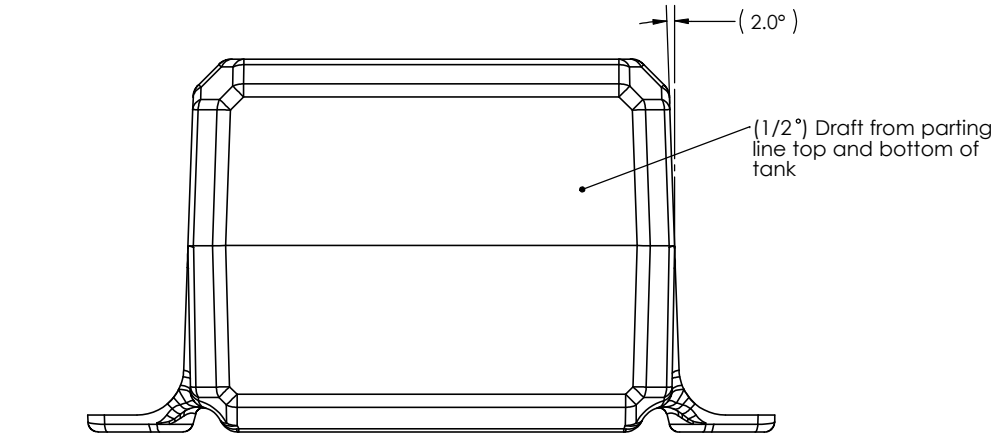
PART NUMBER	MATERIAL	COLOR
070684B	PE235 per ASTM D4976A	NATURAL
070824A	PP06000055592 PER ASTM 5857-05A	NATURAL



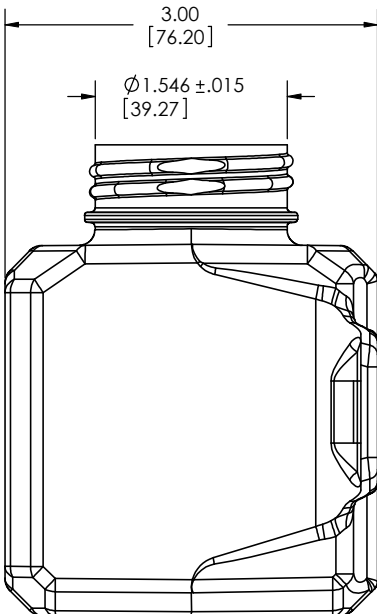
TOP VIEW



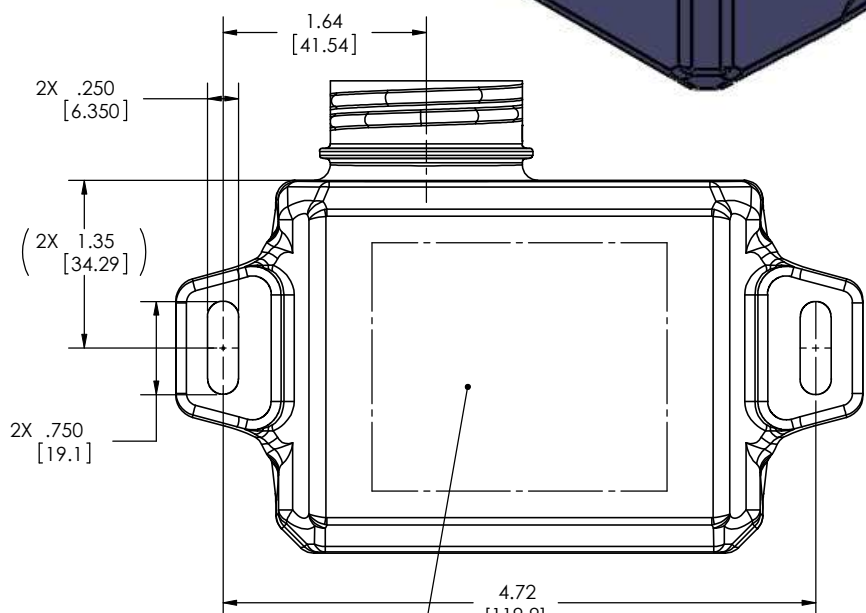
FRONT VIEW



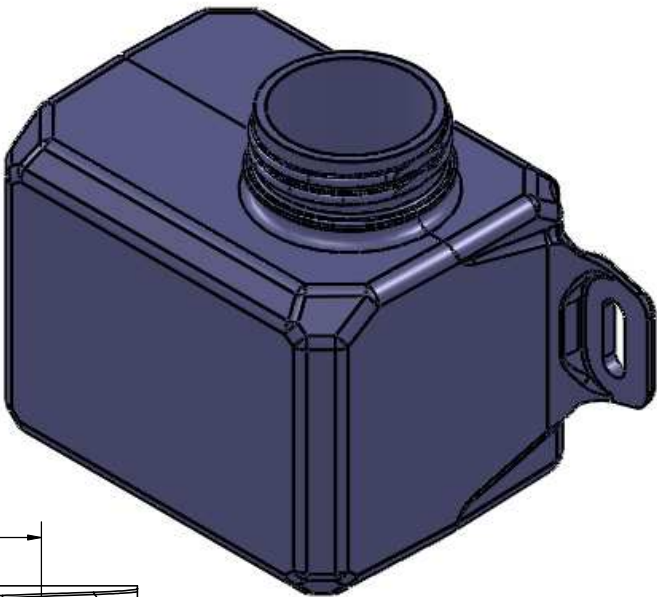
BOTTOM VIEW



SIDE VIEW



BACK VIEW



Material Designation, Date Code,
Flambeau Logo In Approx. Area
as Shown

NOTE:

1. UV Stabilized
2. Wall thickness: .125" Nominal, .050" Minimum
3. This Flambeau print supercedes all customer prints
4. Neck Dimension Reference Drawing S-10343

REV	DESCRIPTION	DATE	BY	APR
2	Revised tabs, updated tolerances and dwg to std format, Change 4.77 to 4.72	3-25-11	DFS	C/JG
1	Released for Production	9-10-10	RDL	EE

PROPRIETARY AND CONFIDENTIAL THE INFORMATION CONTAINED IN THIS DRAWING IS THE SOLE PROPERTY OF FLAMBEAU, INC. ANY REPRODUCTION IN PART OR AS A WHOLE WITHOUT THE WRITTEN PERMISSION OF FLAMBEAU, INC. IS PROHIBITED.		SHT 1		FLAMBEAU, INC. 911 LYNN AVENUE BARABOO, WI 53913 PH.(608)356-5551	
Mold No: 5424		Scale: 1:1		BFI No: P00249	
Matl: See Notes		Shrink: NA		Drawn By: RDL Date: 5-10-10	
ENG: [Signature]		IMFG: [Signature]		Chkd By: DFS Date: 4/6/11	
Description: 0.50 Quart Tank		Customer: Flambeau Fluid Systems		Dwg No: 5424	