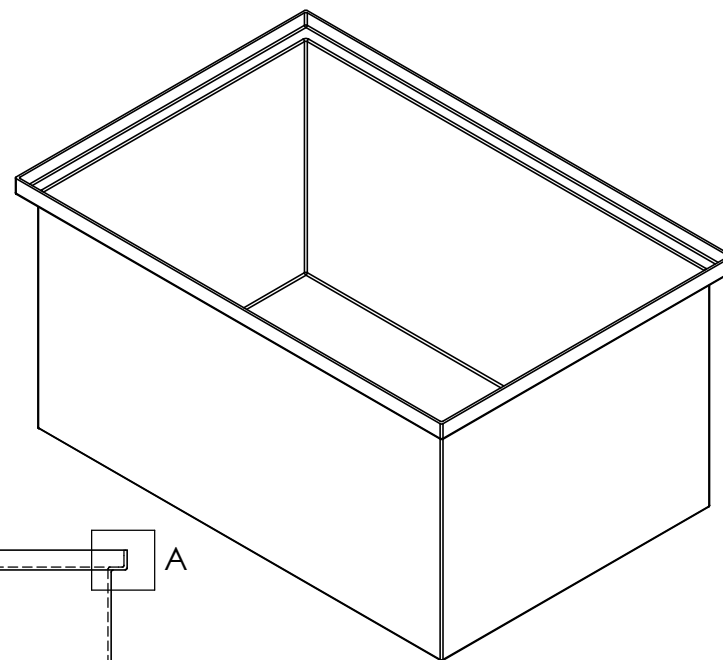
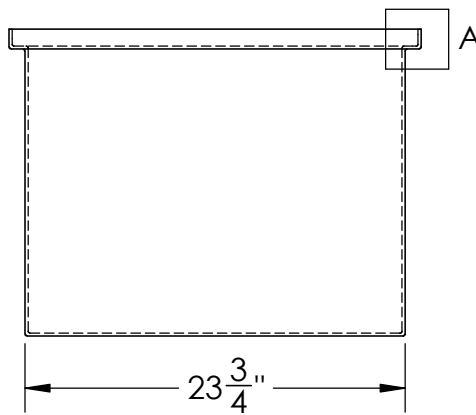
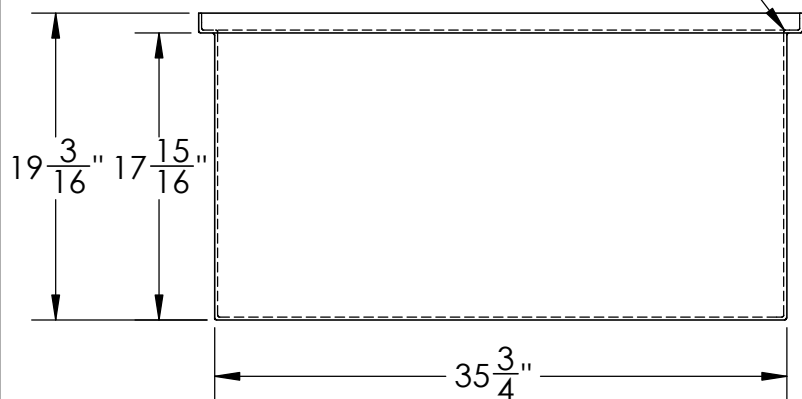


DETAIL A

Catalog options:  
Cover #14844



ALL FILLETS AND  
ROUNDS  $R\frac{1}{8}"$



Heavy Duty Polyethylene  
Tank w/ Internal Flange #14851



1390 Neubrecht Road  
Lima, Ohio 45801

STOCK NO.

14851

REV

A

DO NOT SCALE DRAWING

WEIGHT: 30 lbs.

**PROPRIETARY AND CONFIDENTIAL**

THE INFORMATION CONTAINED IN THIS  
DRAWING IS THE SOLE PROPERTY OF  
TAMCO. ANY REPRODUCTION IN PART  
OR AS A WHOLE WITHOUT THE WRITTEN  
PERMISSION OF TAMCO IS PROHIBITED.

MAX. OPERATING TEMP. 140°F  
INTERMITTENT SERVICE TO 160°F  
SEE CHEMICAL RESISTANCE  
CHART FOR COMPATABILITY

DIMENSIONS ARE IN INCHES  
TOLERANCE:  $\pm 1/4"$

MATERIAL  
LLDPE - FDA resin

CAPACITY  
67 US gal.

GRADUATIONS  
NO

NOMINAL WALL THICKNESS  
3/16"

DRAWN

NAME

JMP

DATE

11/20/18

APPROVED

COMMENTS:

Black  
UV Stabilized