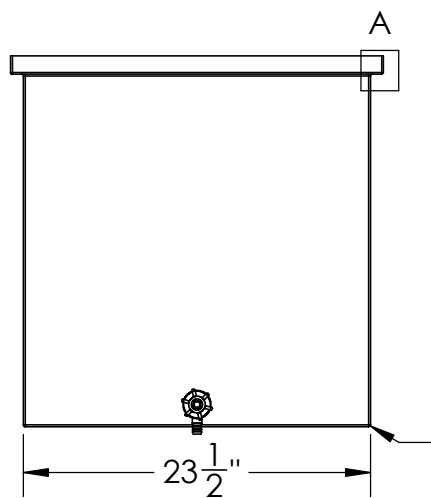
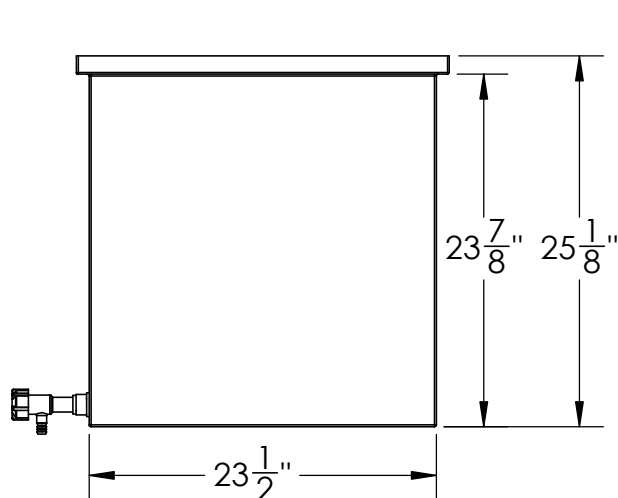
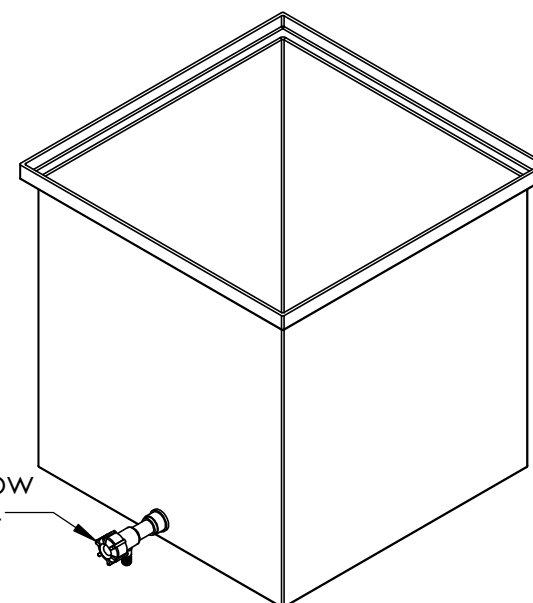


DETAIL A

Catalog options:  
Cover #6372



3/4" NPT PP Flow  
Spigot #16484



All Fillets  
and Rounds R  $\frac{1}{8}$ "

Heavy Duty Polyethylene  
Tank w/ Internal Flange & Spigot  
#14900



1390 Neubrecht Road  
Lima, Ohio 45801

STOCK NO.

14900

REV

A

DO NOT SCALE DRAWING

WEIGHT: 32 lbs.

**PROPRIETARY AND CONFIDENTIAL**

THE INFORMATION CONTAINED IN THIS  
DRAWING IS THE SOLE PROPERTY OF  
TAMCO. ANY REPRODUCTION IN PART  
OR AS A WHOLE WITHOUT THE WRITTEN  
PERMISSION OF TAMCO IS PROHIBITED.

MAX. OPERATING TEMP. 140°F  
INTERMITTENT SERVICE TO 160°F  
SEE CHEMICAL RESISTANCE  
CHART FOR COMPATABILITY

DIMENSIONS ARE IN INCHES TOLERANCE: $\pm 1/4$ "	
MATERIAL	LLDPE - FDA resin
CAPACITY	60 US gal.
GRADUATIONS	NO
NOMINAL WALL THICKNESS	1/4"

	NAME	DATE
DRAWN	JMP	12/18/18
APPROVED		
COMMENTS:		
Translucent UV Stabilized		