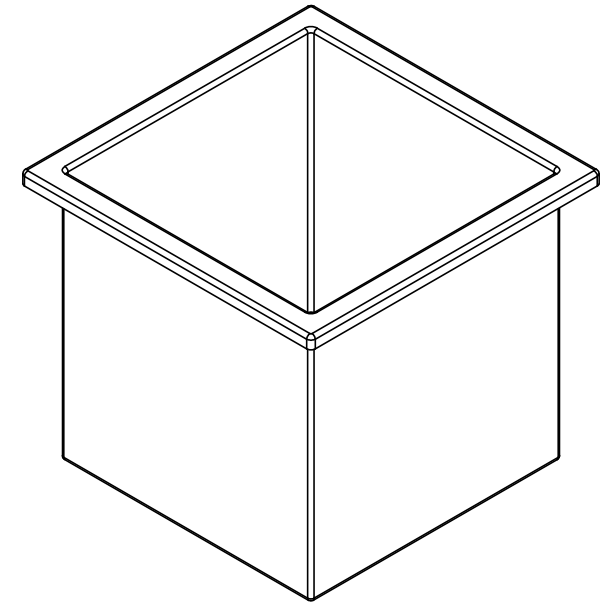


Catalog options:  
Cover #15315



Black Heavy Duty Polyethylene  
Tank w/ External Flange  
#15303



1390 Neubrecht Road  
Lima, Ohio 45801

STOCK NO.

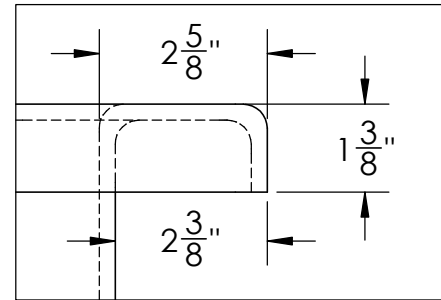
15303

REV

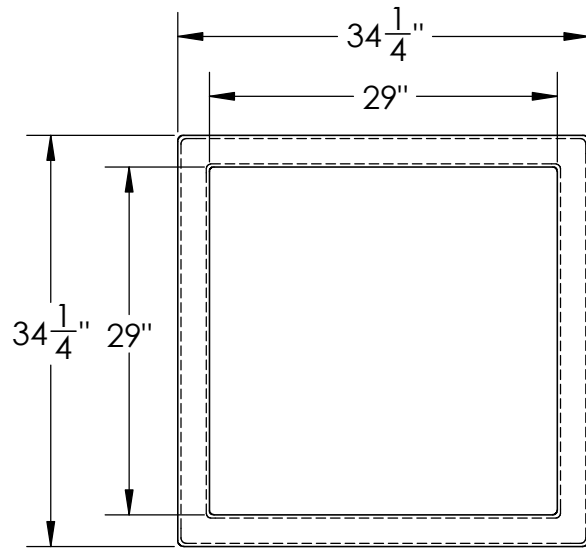
A

DO NOT SCALE DRAWING

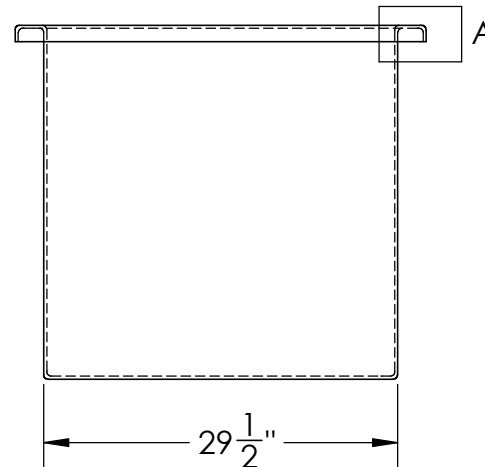
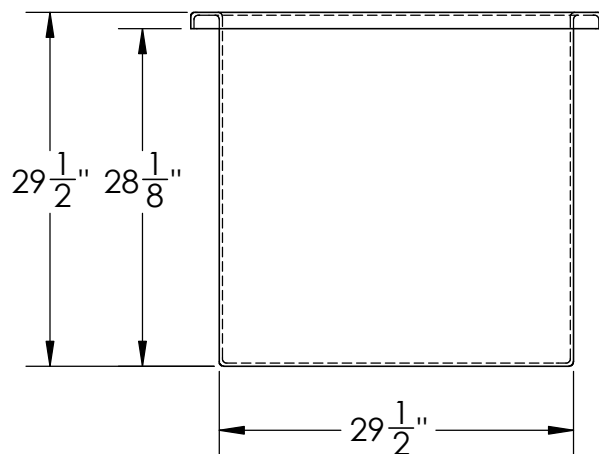
WEIGHT: 40 lbs.



DETAIL A



R 1/2"



DIMENSIONS ARE IN INCHES  
TOLERANCE:  $\pm 1/4"$

MATERIAL  
LLDPE - FDA resin

CAPACITY  
115 US gal.

GRADUATIONS  
NO

NOMINAL WALL THICKNESS  
1/4"

	NAME	DATE
DRAWN	JMP	05/29/20
APPROVED		

COMMENTS:

Black  
UV Stabilized

**PROPRIETARY AND CONFIDENTIAL**

THE INFORMATION CONTAINED IN THIS  
DRAWING IS THE SOLE PROPERTY OF  
TAMCO. ANY REPRODUCTION IN PART  
OR AS A WHOLE WITHOUT THE WRITTEN  
PERMISSION OF TAMCO IS PROHIBITED.

MAX. OPERATING TEMP. 140°F  
INTERMITTENT SERVICE TO 160°F  
SEE CHEMICAL RESISTANCE  
CHART FOR COMPATABILITY