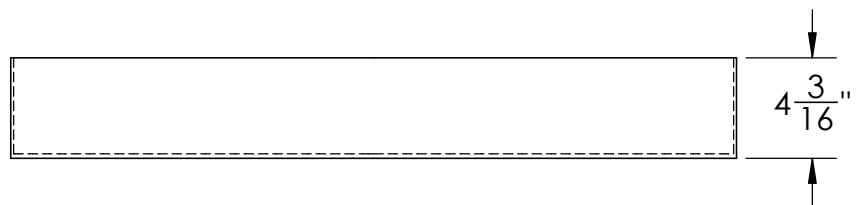
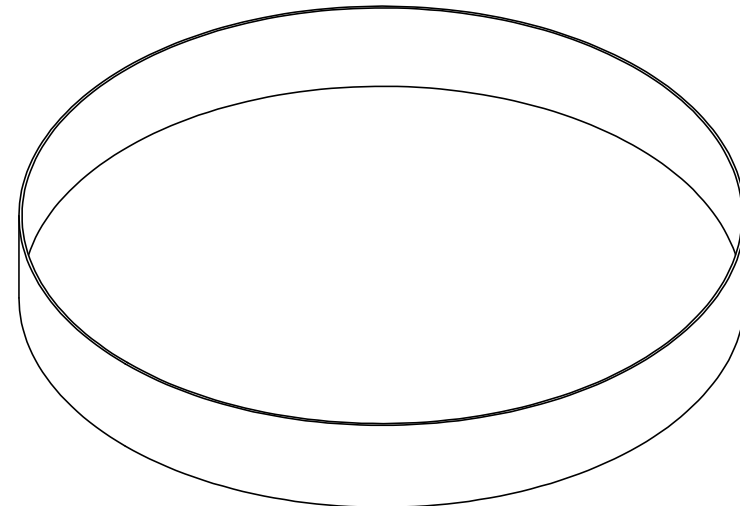


Catalog options:
Cover # 15788



Polyethylene Round Tray
#15775

1390 Neubrecht Road
 Lima, Ohio 45801

STOCK NO.	15775	REV	A
DO NOT SCALE DRAWING		WEIGHT: 6.5 lbs.	

DIMENSIONS ARE IN INCHES TOLERANCE: $\pm 1/4$ "			
MATERIAL	WELDED PE	DRAWN	JMP
		APPROVED	
CAPACITY	13.5 Gal.	DATE	6/11/19
GRADUATIONS	N/A	COMMENTS:	
NOMINAL WALL THICKNESS	3/16" bottom 1/8" sides	Other tray sizes, special partitions, flanges, outlets, etc. are available	

PROPRIETARY AND CONFIDENTIAL

THE INFORMATION CONTAINED IN THIS DRAWING IS THE SOLE PROPERTY OF TAMCO. ANY REPRODUCTION IN PART OR AS A WHOLE WITHOUT THE WRITTEN PERMISSION OF TAMCO IS PROHIBITED.

MAX. OPERATING TEMP. 140°F
INTERMITTENT SERVICE TO 160°F
SEE CHEMICAL RESISTANCE CHART FOR COMPATIBILITY