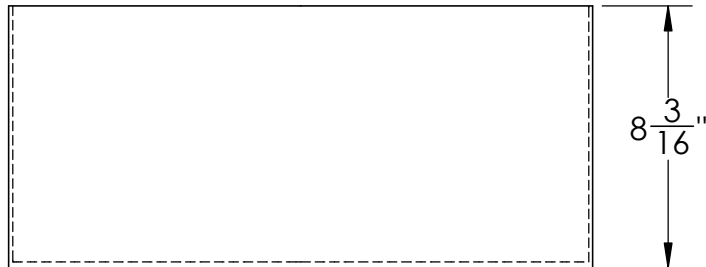
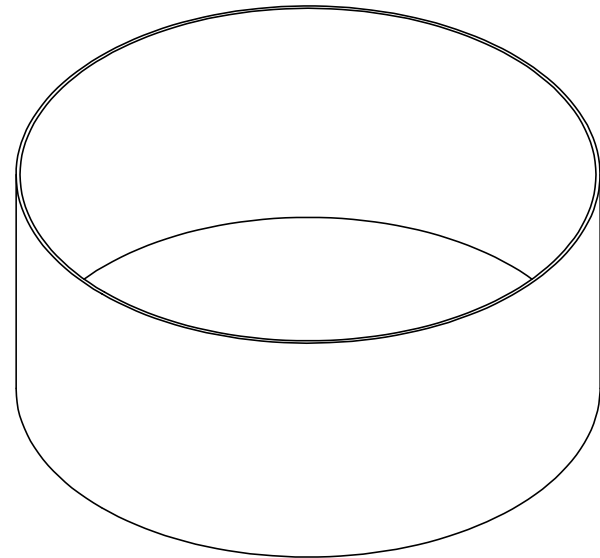


Catalog options:
Cover # 15790



Polypropylene Round Tray
#15780



1390 Neubrecht Road
Lima, Ohio 45801

STOCK NO.	15780	REV	A
DO NOT SCALE DRAWING		WEIGHT: 4 lbs.	

DIMENSIONS ARE IN INCHES TOLERANCE: ± 1/4"			
MATERIAL	WELDED PP	DRAWN	JMP
		APPROVED	
CAPACITY	8.5 Gal.	DATE	6/12/19
GRADUATIONS	N/A	COMMENTS:	
NOMINAL WALL THICKNESS	3/16" bottom 1/8" sides	Other tray sizes, special partitions, flanges, outlets, etc. are available	

PROPRIETARY AND CONFIDENTIAL
THE INFORMATION CONTAINED IN THIS DRAWING IS THE SOLE PROPERTY OF TAMCO. ANY REPRODUCTION IN PART OR AS A WHOLE WITHOUT THE WRITTEN PERMISSION OF TAMCO IS PROHIBITED.

MAX. OPERATING TEMP. 140°F
INTERMITTENT SERVICE TO 160°F
SEE CHEMICAL RESISTANCE CHART FOR COMPATIBILITY