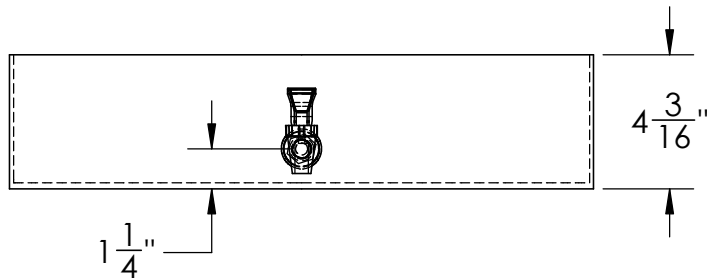
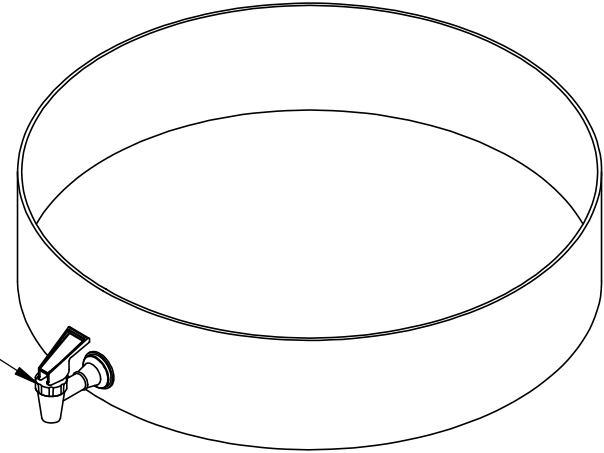


Catalog options:
Cover # 15786

White HFSLT Faucet
3/4"-16 UNF 1" Long #16598



HDPE Round Tray
with Faucet #15930



1390 Neubrecht Road
Lima, Ohio 45801

STOCK NO. **15930** REV **A**

DO NOT SCALE DRAWING

WEIGHT: 3 lbs.

DIMENSIONS ARE IN INCHES TOLERANCE: $\pm 1/4$ "		NAME	DATE
MATERIAL WELDED HDPE		DRAWN JMP	6/20/19
CAPACITY 4 Gal.		APPROVED	
GRADUATIONS N/A		COMMENTS: Other tray sizes, special partitions, flanges, outlets, etc. are available	
NOMINAL WALL THICKNESS 3/16" bottom 1/8" sides			

PROPRIETARY AND CONFIDENTIAL
THE INFORMATION CONTAINED IN THIS DRAWING IS THE SOLE PROPERTY OF TAMCO. ANY REPRODUCTION IN PART OR AS A WHOLE WITHOUT THE WRITTEN PERMISSION OF TAMCO IS PROHIBITED.

MAX. OPERATING TEMP. 140°F
INTERMITTENT SERVICE TO 160°F
SEE CHEMICAL RESISTANCE CHART FOR COMPATIBILITY