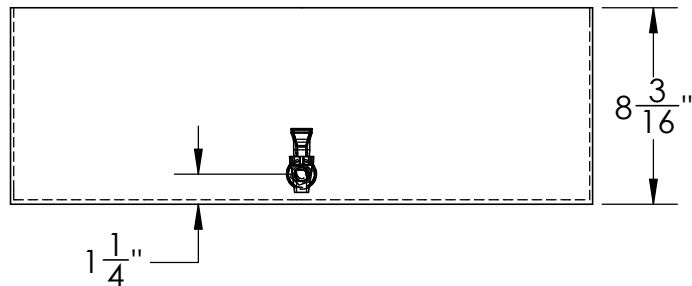
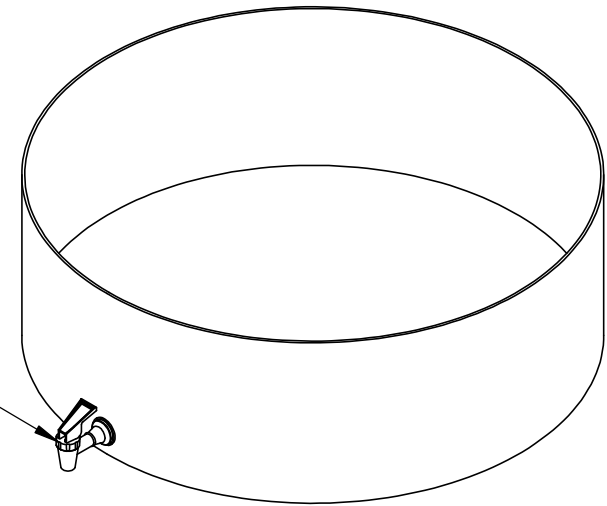


Catalog options:
Cover # 15787

White HFSLT Faucet
3/4"-16 UNF 1" Long #16598



HDPE Round Tray
with Faucet #15933



1390 Neubrecht Road
Lima, Ohio 45801

STOCK NO.

15933

REV

A

DO NOT SCALE DRAWING

WEIGHT: 6 lbs.

PROPRIETARY AND CONFIDENTIAL

THE INFORMATION CONTAINED IN THIS
DRAWING IS THE SOLE PROPERTY OF
TAMCO. ANY REPRODUCTION IN PART
OR AS A WHOLE WITHOUT THE WRITTEN
PERMISSION OF TAMCO IS PROHIBITED.

MAX. OPERATING TEMP. 140°F
INTERMITTENT SERVICE TO 160°F
SEE CHEMICAL RESISTANCE
CHART FOR COMPATABILITY

DIMENSIONS ARE IN INCHES
TOLERANCE: $\pm 1/4$ "

MATERIAL
WELDED HDPE

CAPACITY
15 Gal.

GRADUATIONS
N/A

NOMINAL WALL THICKNESS
3/16" bottom 1/8" sides

| | NAME | DATE |
|----------|------|---------|
| DRAWN | JMP | 6/20/19 |
| APPROVED | | |

COMMENTS:

Other tray sizes,
special partitions,
flanges, outlets, etc.
are available