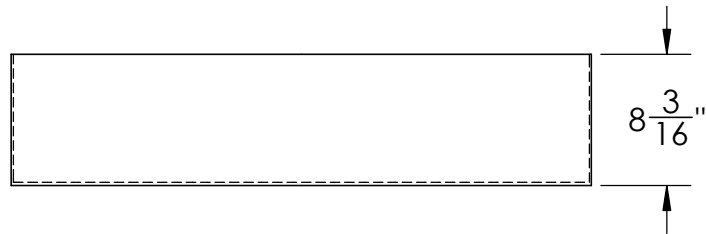
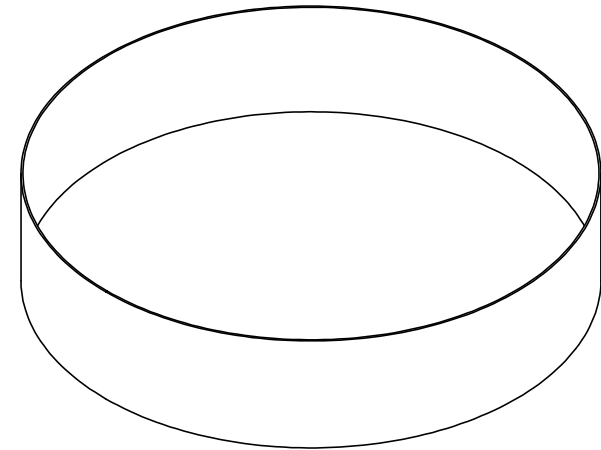


Catalog options:
Cover # 16316



HDPE Round Tray
#16315



1390 Neubrecht Road
Lima, Ohio 45801

STOCK NO.

16315

REV

A

DO NOT SCALE DRAWING

WEIGHT: 11 lbs.

DIMENSIONS ARE IN INCHES
TOLERANCE: $\pm 1/4$ "

MATERIAL
WELDED HDPE

CAPACITY
34 Gal.

GRADUATIONS
N/A

NOMINAL WALL THICKNESS
3/16" bottom 1/8" sides

	NAME	DATE
DRAWN	JMP	6/4/20
APPROVED		

COMMENTS:
Other tray sizes,
special partitions,
flanges, outlets, etc.
are available

PROPRIETARY AND CONFIDENTIAL

THE INFORMATION CONTAINED IN THIS DRAWING IS THE SOLE PROPERTY OF TAMCO. ANY REPRODUCTION IN PART OR AS A WHOLE WITHOUT THE WRITTEN PERMISSION OF TAMCO IS PROHIBITED.

MAX. OPERATING TEMP. 140°F
INTERMITTENT SERVICE TO 160°F
SEE CHEMICAL RESISTANCE
CHART FOR COMPATIBILITY