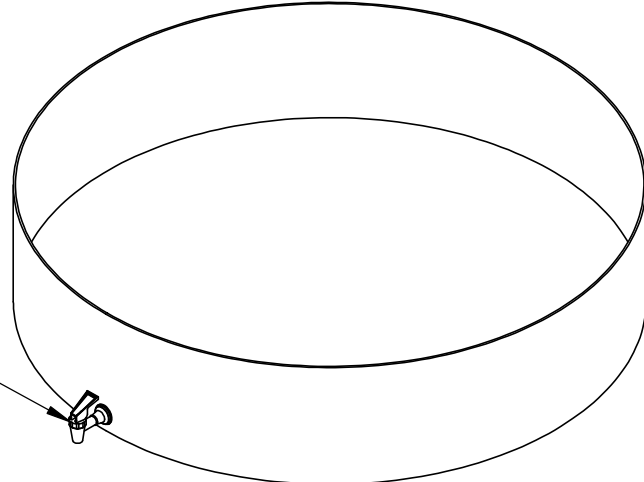
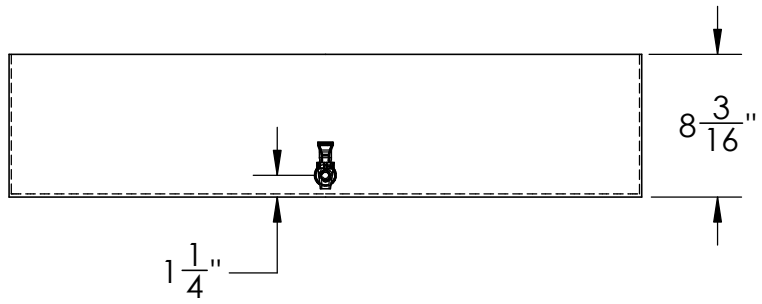


Catalog options:
Cover # 16316



White HFSLT Faucet
3/4"-16 UNF 1" Long #16598



HDPE Round Tray
with Faucet #16327



DIMENSIONS ARE IN INCHES TOLERANCE: $\pm 1/4$ "		NAME	DATE
MATERIAL	WELDED HDPE	DRAWN	JMP 6/15/20
		APPROVED	

PROPRIETARY AND CONFIDENTIAL
THE INFORMATION CONTAINED IN THIS DRAWING IS THE SOLE PROPERTY OF TAMCO. ANY REPRODUCTION IN PART OR AS A WHOLE WITHOUT THE WRITTEN PERMISSION OF TAMCO IS PROHIBITED.

MAX. OPERATING TEMP. 140°F
INTERMITTENT SERVICE TO 160°F
SEE CHEMICAL RESISTANCE CHART FOR COMPATIBILITY

CAPACITY	35 Gal.
GRADUATIONS	N/A
NOMINAL WALL THICKNESS	3/16" bottom 1/8" sides

COMMENTS:
Other tray sizes, special partitions, flanges, outlets, etc. are available

STOCK NO. **16327** REV **A**

DO NOT SCALE DRAWING WEIGHT: 10.5 lbs.