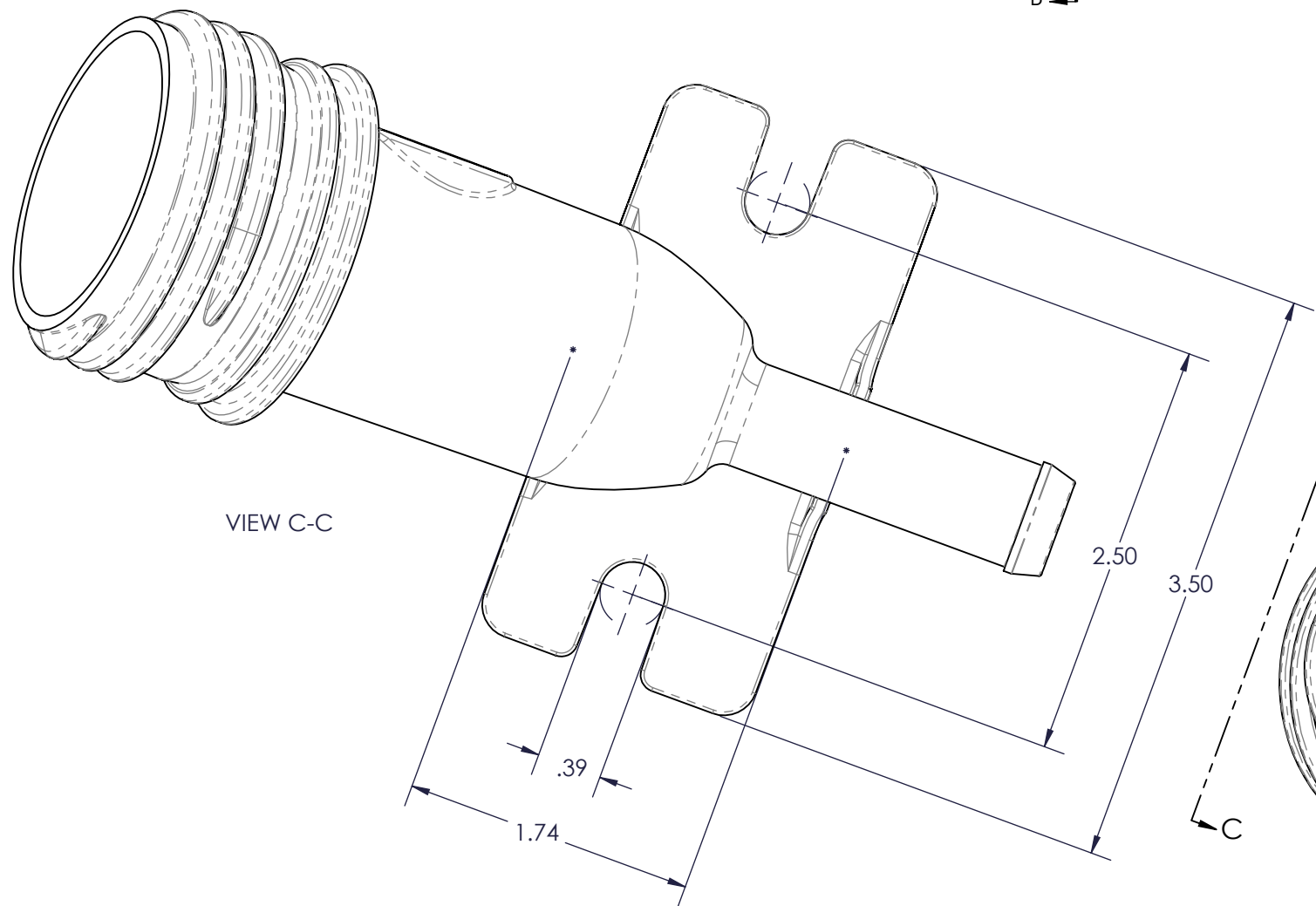
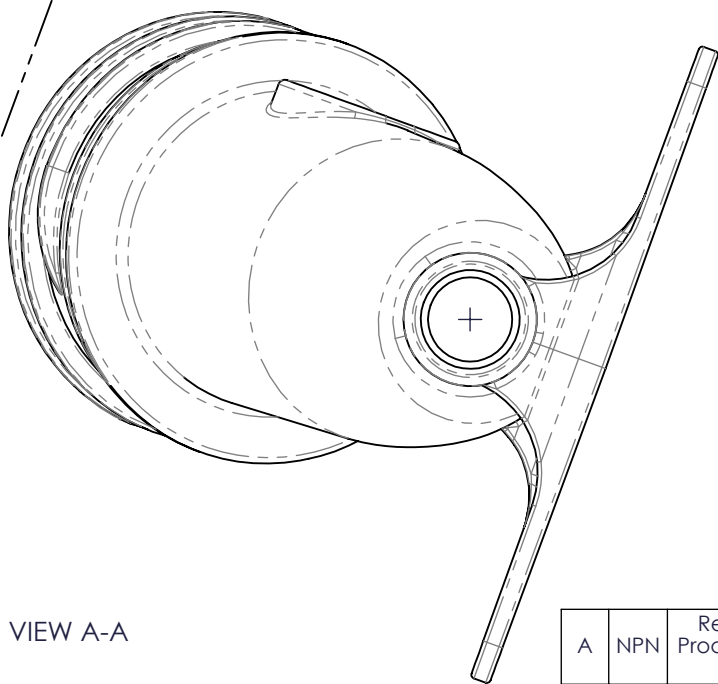


SECTION B-B



VIEW C-C



VIEW A-A

Notes
1. Thread: 2.25" Modified Buttress - 5 TPI See S-10307


| FPN | Description | Material | Color |
|----------|----------------------------|----------|---------|
| 071939AE | 2.25 Remote Fill - Inj Nat | HDPE | Natural |
| 071940AE | 2.25 Remote Fill - Inj Blk | HDPE | Black |

| |
|-------------------|
| CUSTOMER SIGN-OFF |
| COMPANY: |
| SIGNATURE: |
| PRINTED NAME: |
| DATE: |

| REV | ECR | DESCRIPTION | DATE | BY | APR |
|-----|-----|---|----------|-----|-----|
| A | NPN | Released FPNs 071939AE and 071940AE to Production; Add p/n Chart; Revise dimensions to Sample | 07-12-18 | CRW | PAM |
| 03 | --- | Revise Melt Weld Pad, Threads, Radii | 02-21-18 | CRW | --- |
| 02 | --- | Remove Thread Parting Line Flats | 02-15-18 | CRW | --- |
| 01 | --- | Reactivated in Vault; Project was BFI-00349; 5/8 Barb was 3/4; Apply Parting Line relief to Threads | 02-13-18 | CRW | --- |

PROPRIETARY AND CONFIDENTIAL
THE INFORMATION CONTAINED IN THIS DRAWING IS THE SOLE PROPERTY OF FLAMBEAU, INC. ANY REPRODUCTION IN PART OR AS A WHOLE WITHOUT THE WRITTEN PERMISSION OF FLAMBEAU, INC. IS PROHIBITED.

TOLERANCES
ANGULAR .XXX
DIMENSIONS IN PARENTHESIS (I) ARE FOR REFERENCE ONLY.
CIRCLED DIMENSIONS ARE CRITICAL.

| | | | |
|---|--|---------------------------|------------------------|
| SHT 1 OF 1 | This drawing made from SW model: PDM-00170 HFRemoteFill 5_00, Model Rev A | | |
| |  FLAMBEAU INC. 911 LYNN AVENUE BARABOO, WI 53913 PH: (608) 356-5551 | | |
| | Proj. No: PDM-00170 | Drawn By: CRW | Flambeau PN: See Chart |
| | Mold No: 6901 | Date: 02-13-18 | |
| Description: 2.25 Remote Fill - Inj | | | |
| Scale 1:1 | Customer: Flambeau Fluids | Dwg No: S-10890 | Rev A |