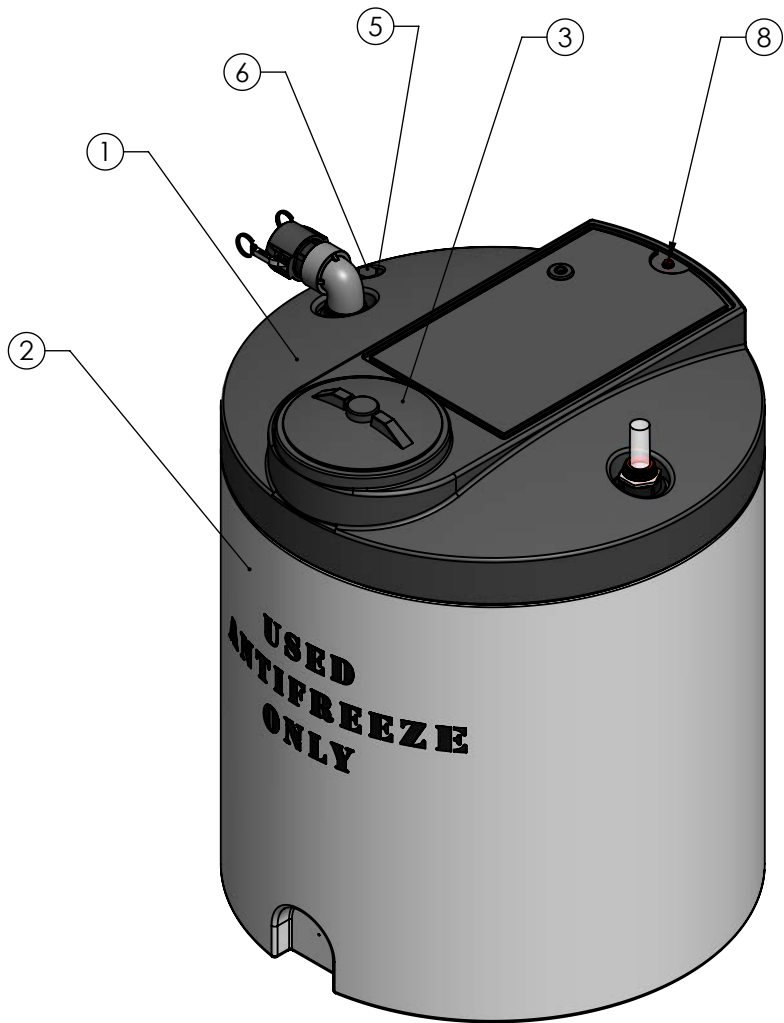
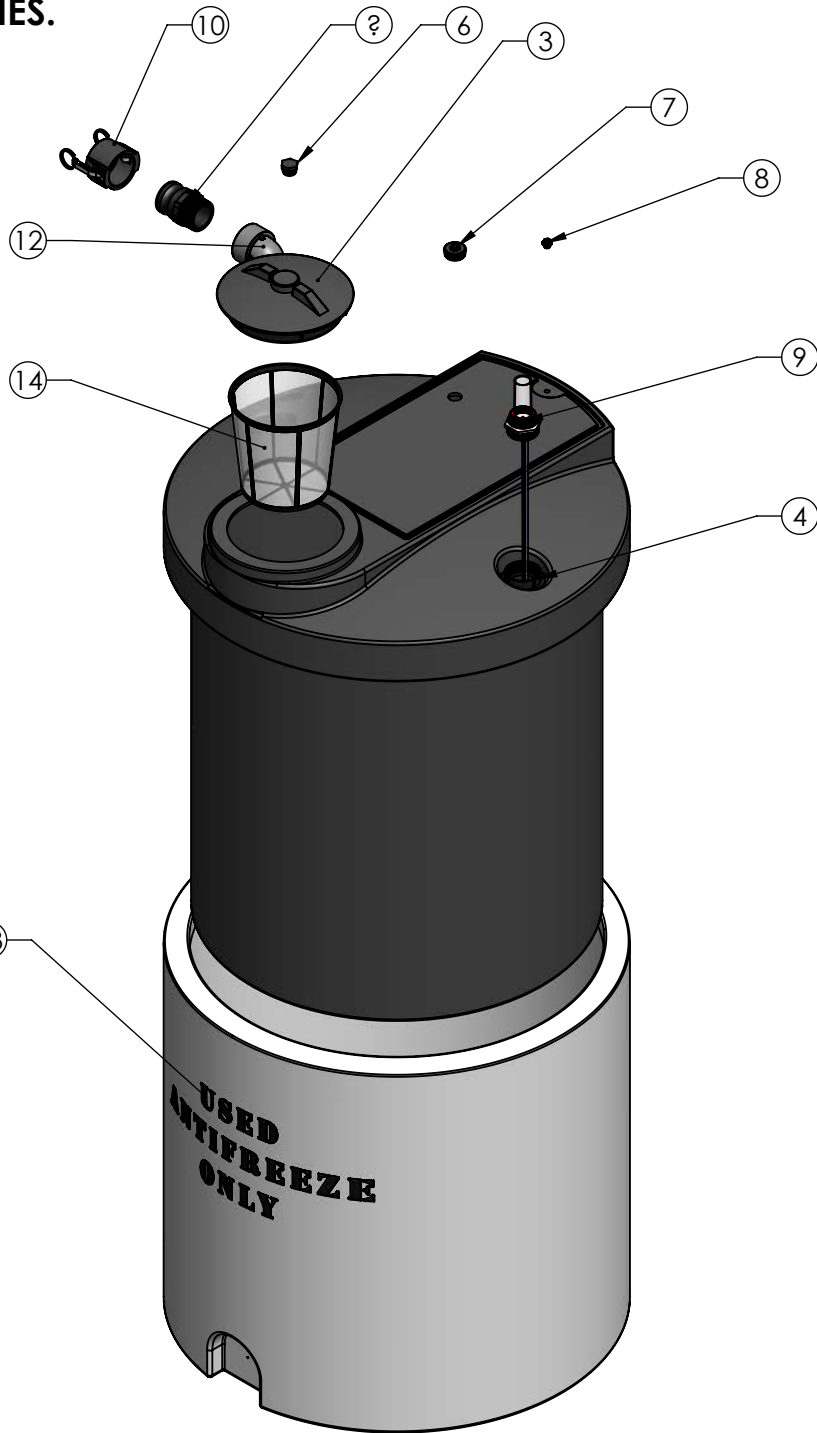


NOTE:
FLOAT GAUGE IS AN OPPTIONAL ADDER.
NOT INCLUDED IN STANDARD USED - OIL & ANTI - FREEZE ASSEMBLIES.




ISOMETRIC VIEW
ASSEMBLED



ISOMETRIC VIEW
EXPLODED

- NOTES:
1. CAPACITY: 90 GAL. NOMINAL
 2. APPROXIMATE WEIGHT: 75 LBS
 3. TANK MATERIAL: LLDPE W/ UV INHIBITOR
 4. GASKETS: EPDM
 5. SERVICE PRESSURE: ATMOSPHERIC

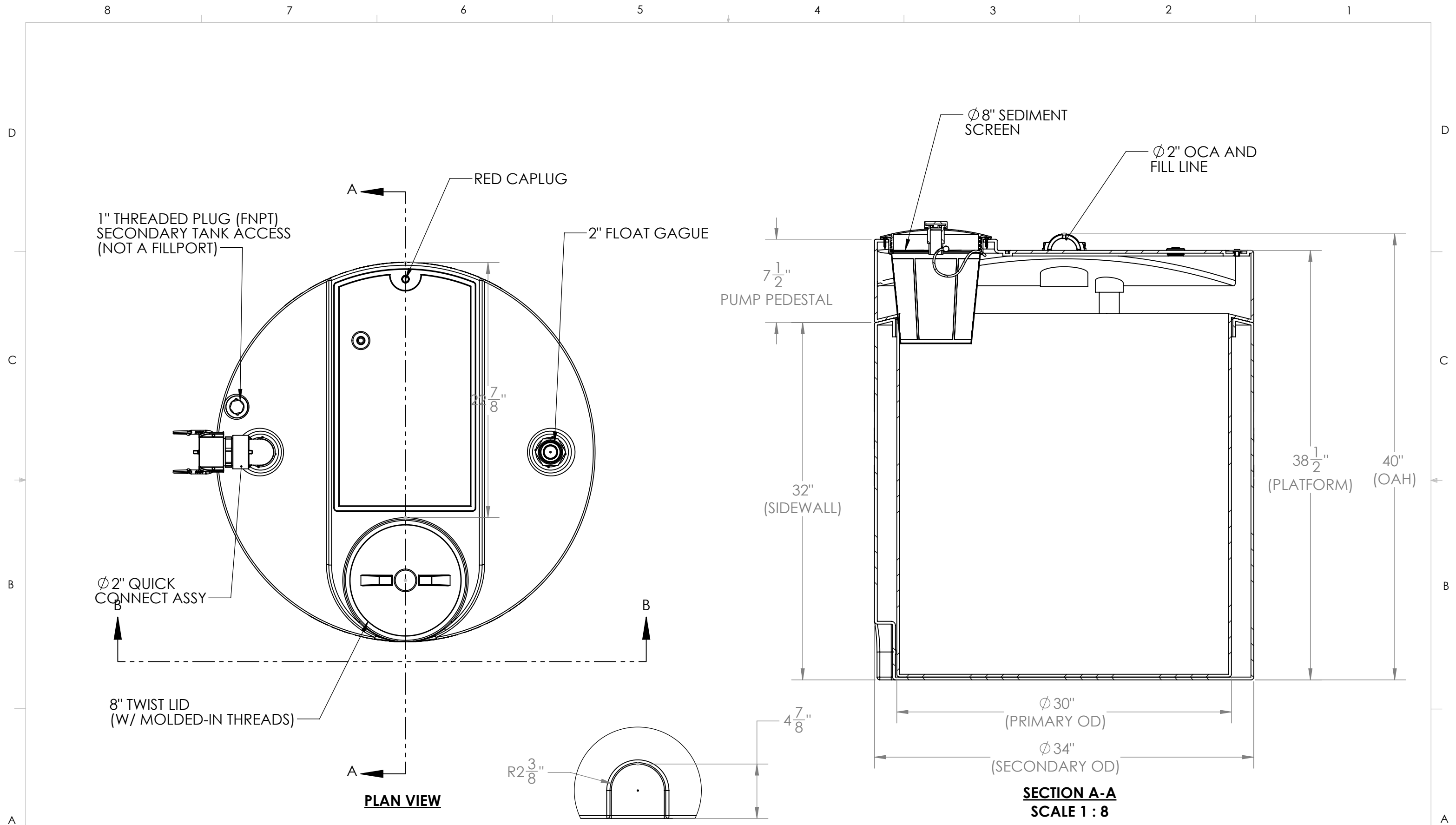
PROPRIETARY AND CONFIDENTIAL
THE INFORMATION CONTAINED IN THIS
DRAWING IS THE SOLE PROPERTY OF
PEABODY ENGINEERING. ANY
REPRODUCTION IN PART OR AS A WHOLE
WITHOUT THE WRITTEN PERMISSION OF
PEABODY ENGINEERING IS
PROHIBITED.

| | | | | | | | | |
|---|--|---|------|--|--|--|--|--------------|
| UNLESS OTHERWISE SPECIFIED: | | NAME | DATE | <div><div>PEABODY engineering</div></div> | | | | |
| DIMENSIONS ARE IN INCHES TOLERANCES: ±1/4" ANGULAR: ± .5° ONE PLACE DECIMAL ± .3" TWO PLACE DECIMAL ± .13" THREE PLACE DECIMAL ± .063" | | DRAWN | JO | 08/8/23 | PROJECT: GEMINI DUAL CONTAINMENT TANKS | | | |
| | | CHECKED | | | CUSTOMER: PEABODY STANDARD | | | |
| TANK MATERIAL: HDPE | | ENG APPR. | | | SITE/LOCATION: | | | |
| INNER TANK S/N: | | MFG APPR. | | | SALES ORDER#: SEE TABLE | | | |
| | | Q.A. | | | | | | |
| OUTER TANK S/N: | | <u>ALTERNATIVE VERSIONS</u> | | | SIZE | | DESC. | REV. |
| CUSTOMER PO# | | MATERIALS: XLPE, PPL, PVDF COLORS: NATURAL, BLUE OR BLACK AVAILABLE WITH FRP WRAP | | | B | | 90 GALLON GEMINI TANK 34" X 41.25" | - |
| DO NOT SCALE DRAWING | | CALL FOR PART NUMBERS | | | SCALE: 1:10 | | LAST SAVED: Monday, September 16, 2024 1:08:47 PM | SHEET 1 OF 2 |

| | |
|------------------|---------------|
| PART NUMBER | |
| 90 GALLON GEMINI | NATURAL/BALCK |
| LPE SD (1.5) | 01-35108 |

ALTERNATE CONFIGURATION TO MEET
NSF/ANSI STANDARD 61 AVAILABLE

| TOP LEVEL ASSEMBLY | | |
|--------------------|---------------------------------|------|
| ITEM NO. | DESCRIPTION | QTY. |
| 1 | 90G GEMINI PRIMARY TANK | 1 |
| 2 | 90G GEMINI SECONDARY TANK | 1 |
| 3 | 8" ID / 10" OD VENTED TWIST LID | 1 |
| 4 | Ø2" FNPT SPIN WELD FITTING, PE | 2 |
| 5 | 3/4" FNPT SPIN WELD FITTING, PE | 1 |
| 6 | Ø3/4" PLUG, MPT, PE, BLACK | 1 |
| 7 | Ø1-5/8" CAPLUG / GROMMET ASSY | 1 |
| 8 | RED CAPLUG / O-RING SUB-ASSY | 1 |
| 9 | Ø2" FLOAT GAUGE | 1 |
| 10 | Ø2" DUST CAP | 1 |
| 11 | 1" TYPE F ADAPTER, PP, BLACK | 1 |
| 12 | 2" 90° STREET ELBOW, PPL | 1 |
| 13 | STENCIL | 2 |
| 14 | Ø8" SEDIMENT SCREEN | 1 |



| | | |
|--------------------------|------|--------------|
| PROJECT: 90G Gemini Assy | | |
| SCALE: 1:10 | REV. | SHEET 2 OF 2 |