

NOTE:
FLOAT GAUGE IS AN OPPTIONAL ADDER.
NOT INCLUDED IN STANDARD USED - OIL & ANTI - FREEZE ASSEMBLIES.

PART NUMBER	
160 GALLON GEMINI	NATURAL/BLACK
LPE SD (1.5)	01-35110


ALTERNATE CONFIGURATION TO MEET
NSF/ANSI STANDARD 61 AVAILABLE

TOP LEVEL ASSEMBLY		
ITEM NO.	DESCRIPTION	QTY.
1	160G GEMINI PRIMARY TANK	1
2	160G GEMINI SECONDARY TANK	1
3	8" ID / 10" OD VENTED TWIST LID	1
4	Ø2" FNPT SPIN WELD FITTING, PE	2
5	Ø1" FNPT SPIN WELD FITTING, PE	1
6	Ø1" PLUG, MPT, PE, BLACK	1
7	Ø1-5/8" CAPLUG / GROMMET ASSY	1
8	RED CAPLUG / O-RING SUB-ASSY	1
9	Ø2" FLOAT GAUGE	1
10	1" TYPE F ADAPTER, PP, BLACK	1
11	2" 90° STREET ELBOW, PPL	1
12	Ø2" DUST CAP	1
13	STENCIL	2
14	Ø8" SEDIMENT SCREEN	1

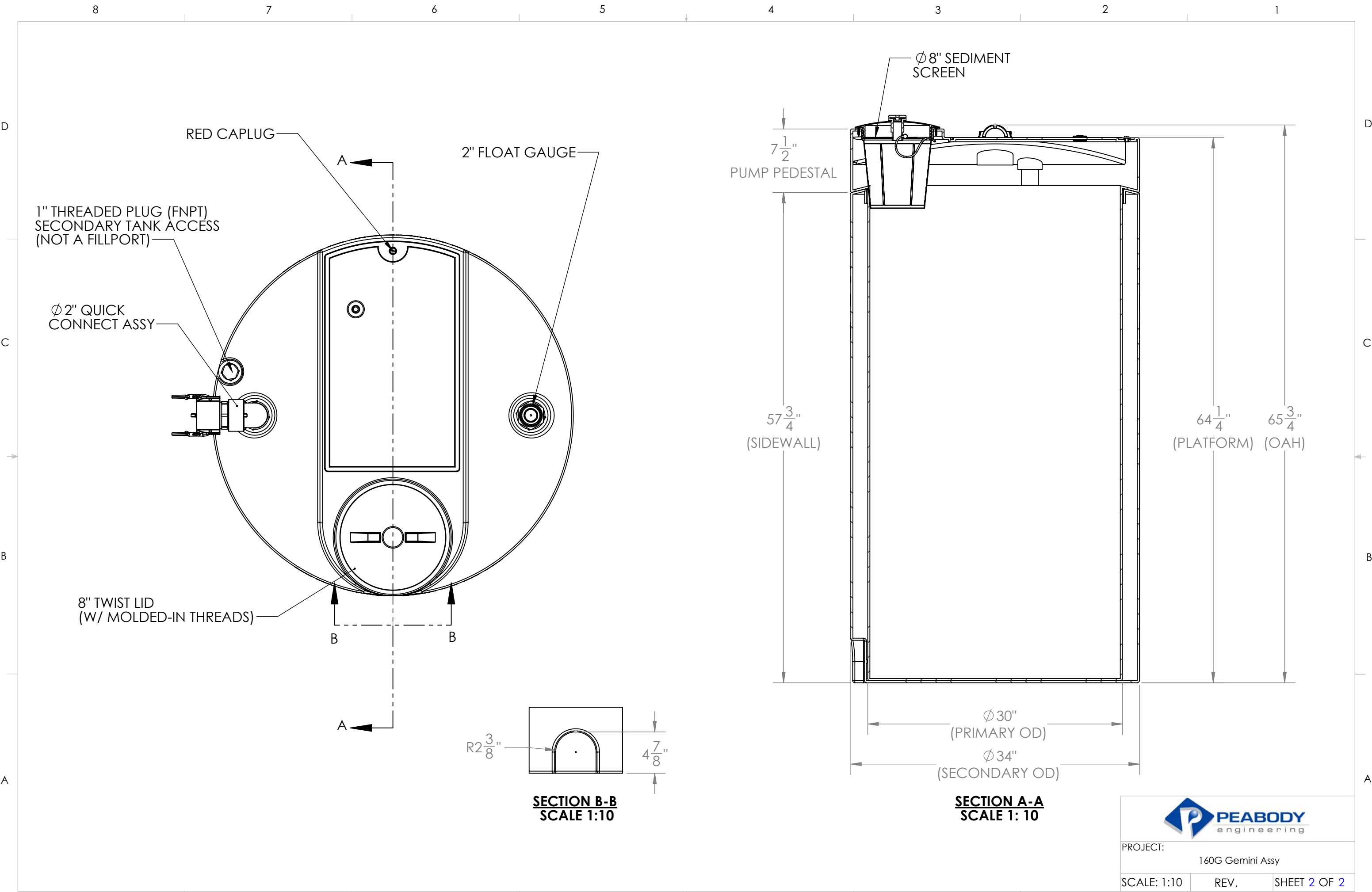
ISOMETRIC VIEW
ASSEMBLED

ISOMETRIC VIEW
EXPLODED

PROPRIETARY AND CONFIDENTIAL
THE INFORMATION CONTAINED IN THIS
DRAWING IS THE SOLE PROPERTY OF
PEABODY ENGINEERING. ANY
REPRODUCTION IN PART OR AS A WHOLE
WITHOUT THE WRITTEN PERMISSION OF
PEABODY ENGINEERING IS
PROHIBITED.

UNLESS OTHERWISE SPECIFIED:		NAME	DATE		
DIMENSIONS ARE IN INCHES TOLERANCES: ±1/4" ANGULAR: ± .5° ONE PLACE DECIMAL ± .3" TWO PLACE DECIMAL ± .13" THREE PLACE DECIMAL ± .063"		DRAWN	JO	08/8/23	PROJECT: GEMINI DUAL CONTAINMENT TANKS
		CHECKED			CUSTOMER: PEABODY STANDARD
		ENG APPR.			SITE/LOCATION: -
		MFG APPR.			SALES ORDER#: SEE TABLE
		Q.A.			
TANK MATERIAL:	<u>ALTERNATIVE VERSIONS</u>				
INNER TANK S/N:	MATERIALS: XLPE, PPL, PVDF COLORS: NATURAL, BLUE OR BLACK AVAILABLE WITH FRP WRAP				
OUTER TANK S/N:					
CUSTOMER PO#					
DO NOT SCALE DRAWING	CALL FOR PART NUMBERS				
SCALE: 1:10				LAST SAVED: Monday, September 16, 2024 1:14:53 PM	SHEET 1 OF 2
SIZE B				DESC. 160 GALLON GEMINI TANK 34" x 68"	REV. -

- NOTES:
- CAPACITY: 160 GAL. NOMINAL
 - APPROXIMATE WEIGHT: 160 LBS
 - TANK MATERIAL: LLDPE W/ UV INHIBITOR
 - GASKETS: EPDM
 - SERVICE PRESSURE: ATMOSPHERIC



PROJECT:		
160G Gemini Assy		
SCALE: 1:10	REV.	SHEET 2 OF 2