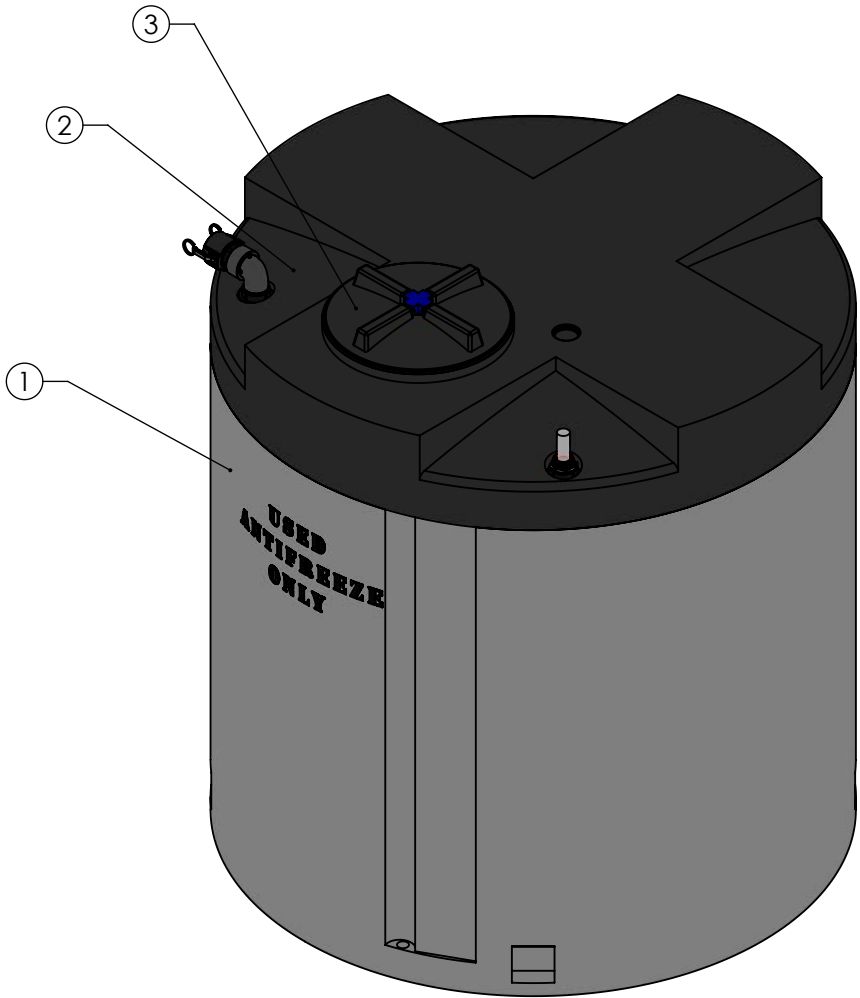


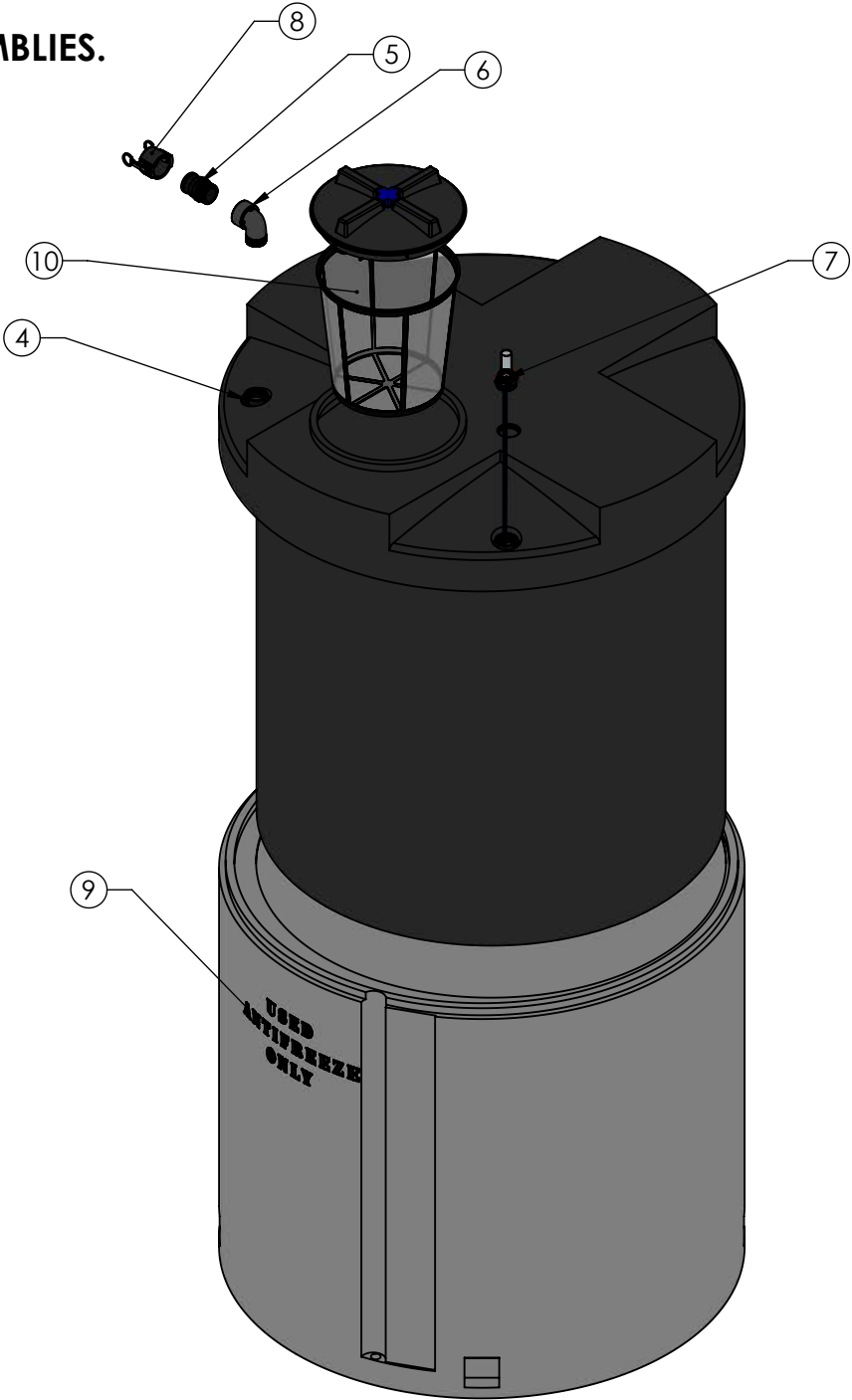
NOTE:  
FLOAT GAUGE IS AN OPPTIONAL ADDER.  
NOT INCLUDED IN STANDARD USED - OIL & ANTI - FREEZE ASSEMBLIES.

PART NUMBER	
500 GALLON GEMINI	NATURAL/BLACK
LPE SD (1.5)	01-35113

ALTERNATE CONFIGURATION TO MEET  
NSF/ANSI STANDARD 61 AVAILABLE



ISOMETRIC VIEW  
ASSEMBLED




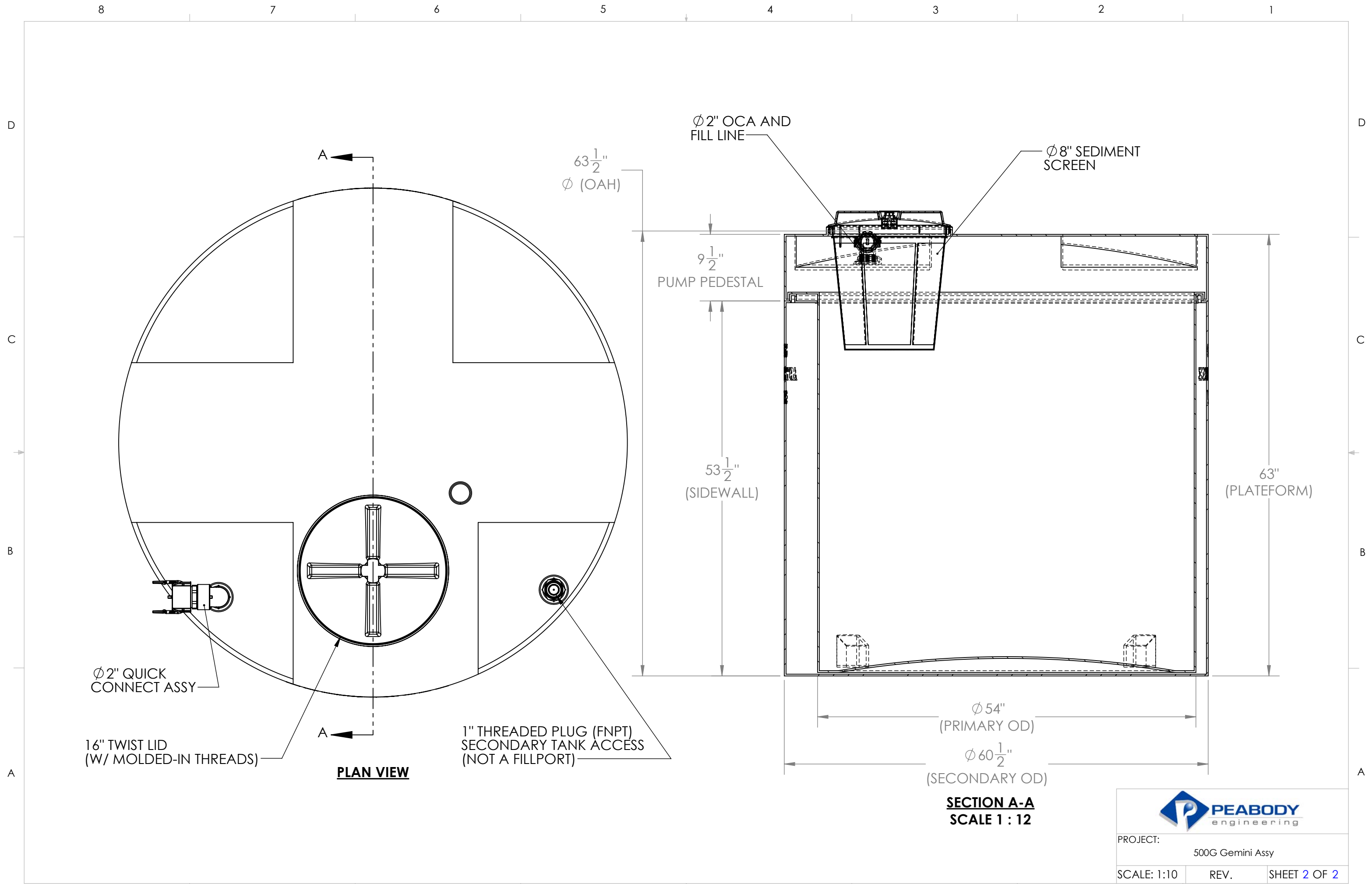
ISOMETRIC VIEW  
EXPLODED

TOP LEVEL ASSEMBLY		
ITEM NO.	DESCRIPTION	QTY.
1	GEMINI 500G, SECONDARY TANK	1
2	GEMINI 500G, PRIMARY TANK	1
3	Ø 16" ID (18" OD) VENTED TWIST LID ASSEMBLY	1
4	Ø2" FNPT SPIN WELD FITTING, PE	2
5	1" TYPE F ADAPTER, PP, BLACK	1
6	2" 90° STREET ELBOW, PPL	1
7	Ø2" FLOAT GAUGE	1
8	Ø2" DUST CAP	1
9	STENCIL	2
10	Ø8" SEDIMENT SCREEN	1

- NOTES:
- CAPACITY: 500 GAL. NOMINAL
  - APPROXIMATE WEIGHT: 350 LBS
  - TANK MATERIAL: LLDPE W/ UV INHIBITOR
  - GASKETS: EPDM
  - SERVICE PRESSURE: ATMOSPHERIC

PROPRIETARY AND CONFIDENTIAL  
THE INFORMATION CONTAINED IN THIS  
DRAWING IS THE SOLE PROPERTY OF  
PEABODY ENGINEERING. ANY  
REPRODUCTION IN PART OR AS A WHOLE  
WITHOUT THE WRITTEN PERMISSION OF  
PEABODY ENGINEERING IS  
PROHIBITED.

UNLESS OTHERWISE SPECIFIED:		NAME	DATE		
DIMENSIONS ARE IN INCHES TOLERANCES: ±1/4" ANGULAR: ± .5° ONE PLACE DECIMAL ± .3" TWO PLACE DECIMAL ± .13" THREE PLACE DECIMAL ± .063"		DRAWN	JO	08/8/23	PROJECT: GEMINI DUAL CONTAINMENT TANKS
		CHECKED			CUSTOMER: PEABODY STANDARD
		ENG APPR.			SITE/LOCATION: -
		MFG APPR.			SALES ORDER#: SEE TABLE
		Q.A.			
TANK MATERIAL: HDPE					
INNER TANK S/N:					
OUTER TANK S/N:					
CUSTOMER PO#					
DO NOT SCALE DRAWING		ALTERNATIVE VERSION MATERIALS: XLPE, PPL, PVDF COLORS: NATURAL, BLUE OR BLACK AVAILABLE WITH FRP WRAP  CALL FOR PART NUMBERS			
		SIZE	DESC.		REV.
		B	500 GALLON GEMINI TANK, 61" x 66.5"		-
		SCALE: 1:10	LAST SAVED: Monday, September 16, 2024 1:26:56 PM	SHEET 1 OF 2	



PROJECT: 500G Gemini Assy		
SCALE: 1:10	REV.	SHEET 2 OF 2