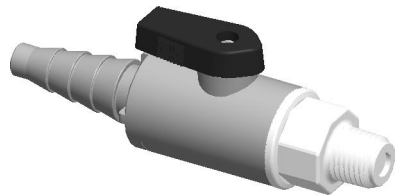
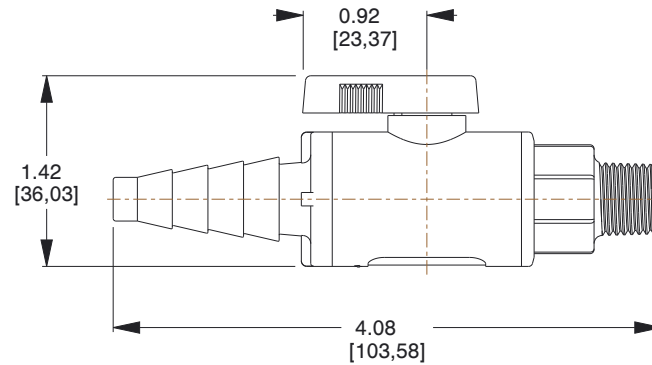
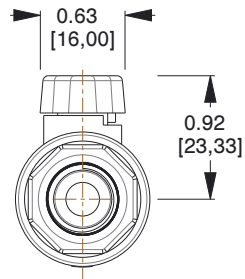
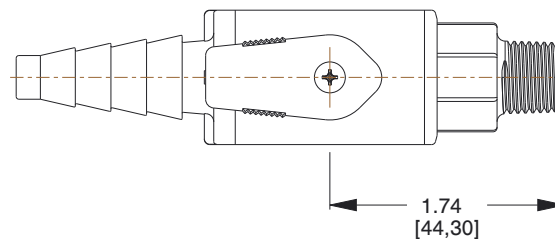


REV	CHANGE	DATE	DRN	CHK
A	Drawn	03-13-2017	CDS	T



Tapered Barb 3/8 to 5/8

Male 1/4



NOTES:

1. Maximum Operating Pressure : 125 psi
2. Maximum Operating Temperature : 140° F
3. Material : PVC
4. Material Color: White PVC
5. Seal Options : Buna
6. Panel Mount : No
7. Panel Mount Options : NA
8. Handle : Long Handle
9. All Drawing Dimensions are in Inches [mm]

Compatibility Statement:

It is sole responsibility of the system designer and user to select products suitable for their specific application requirements and to ensure proper installation, operation, and maintenance of these products.

Material compatibility, product ratings and application details should be considered in the selection. Improper selection or use of products described herein can cause personal injury or product damage.

COMPONENT

BALL VALVE

THE SPECIALTY MFG. CO.

5858 Centerville Road., St. Paul, MN 55127
Phone: (651) 653-0599, Fax (651) 653-0989
www.specialtymfg.com

This Drawing is the Property of SMC.
It contains confidential, proprietary
information that is SMC property. Do
not disclose to or duplicate for others
except as authorized by SMC.

REV	03-13-2017
SHEET	1 of 1
SCALE	0.700

WPVC638-TB4M-B

638-SERIES

TWO WAY PLASTIC BALL VALVE