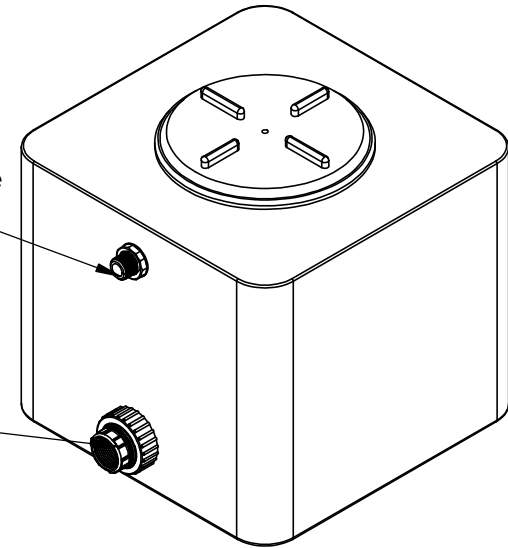
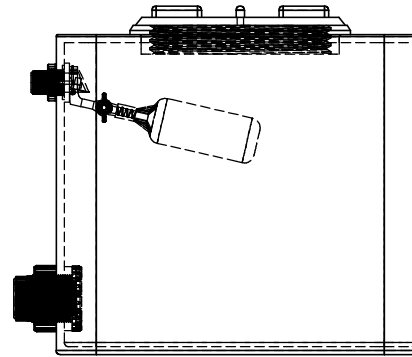
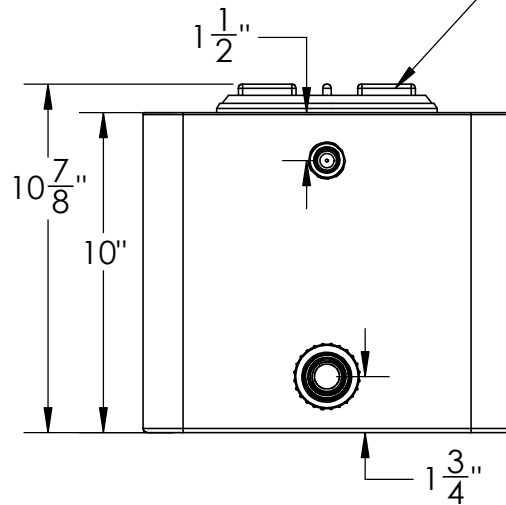


1/2" MIPT PVC Mini
Adjustable Float Valve
#23136

3/4" Bulkhead
PP Fitting
#970233



5.5" Threaded
Lid & Flange Assembly
#970184



4 Gallon PE Heavy Duty
Square Tank w/ 5.5" Lid,
3/4" Fitting & 1/2" Mini Float



1390 Neubrecht Road
Lima, Ohio 45801

STOCK NO.

25651, 25652

REV

A

DO NOT SCALE DRAWING

WEIGHT: 6.5 lbs.

PROPRIETARY AND CONFIDENTIAL

THE INFORMATION CONTAINED IN THIS
DRAWING IS THE SOLE PROPERTY OF
TAMCO. ANY REPRODUCTION IN PART
OR AS A WHOLE WITHOUT THE WRITTEN
PERMISSION OF TAMCO IS PROHIBITED.

MAX. OPERATING TEMP. 140°F
INTERMITTENT SERVICE TO 160°F
SEE CHEMICAL RESISTANCE
CHART FOR COMPATABILITY

DIMENSIONS ARE IN INCHES
TOLERANCE: $\pm 1/4"$

MATERIAL
LLDPE - FDA resin

CAPACITY
4 US gal.

GRADUATIONS
NO

NOMINAL WALL THICKNESS
1/4"

DRAWN

NAME

NJV

DATE

5/1/25

COMMENTS:

Natural, Black
UV Stabilized