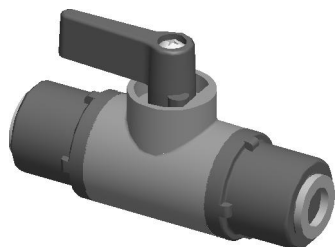
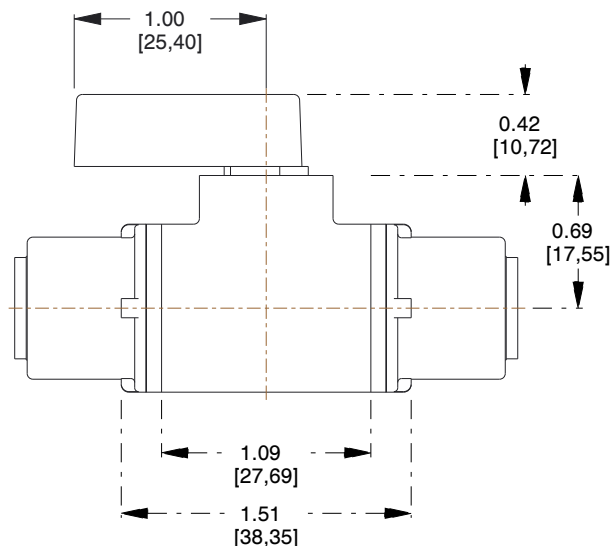
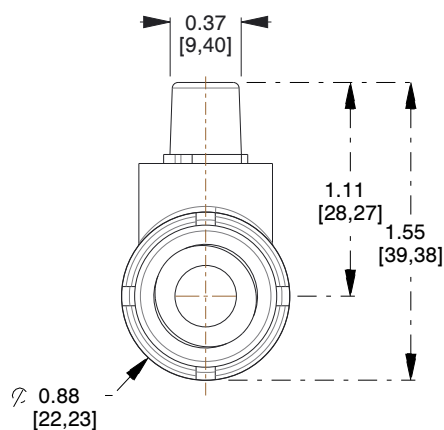
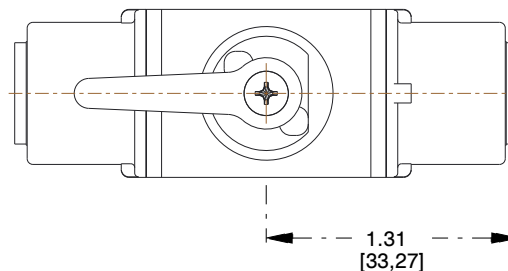


REV	CHANGE	DATE	DRN	CHK
A	Drawn	03-13-2017	CDS	T



Push to Connect 5/16

Push to Connect 5/16



#### NOTES:

1. Maximum Operating Pressure : 125 psi
2. Maximum Operating Temperature : 140° F
3. Material : PVC
4. Material Color: Gray PVC
5. Seal Options : Buna
6. Panel Mount : No
7. Panel Mount Options : NA
8. Handle : Flag Handle- Same as Body Material
9. All Drawing Dimensions are in Inches [mm]

#### Compatibility Statement:

It is sole responsibility of the system designer and user to select products suitable for their specific application requirements and to ensure proper installation, operation, and maintenance of these products.

Material compatibility, product ratings and application details should be considered in the selection. Improper selection or use of products described herein can cause personal injury or product damage.

<div>THE SPECIALTY MFG. CO.</div> <div>5858 Centerville Road., St. Paul, MN 55127 Phone: (651) 653-0599, Fax (651) 653-0989 www.specialtymfg.com</div>	<div>This Drawing is the Property of SMC. It contains confidential, proprietary information that is SMC property. Do not disclose to or duplicate for others except as authorized by SMC.</div>	REV	03-13-2017	<div>PVC226-5CJG5CJG-B</div> <div>226-SERIES</div> <div>TWO WAY PLASTIC BALL VALVE</div>
		SHEET	1 of 1	
		SCALE	1.000	

This Drawing is the Property of SMC. It contains confidential, proprietary information that is SMC property. Do not disclose to or duplicate for others except as authorized by SMC.