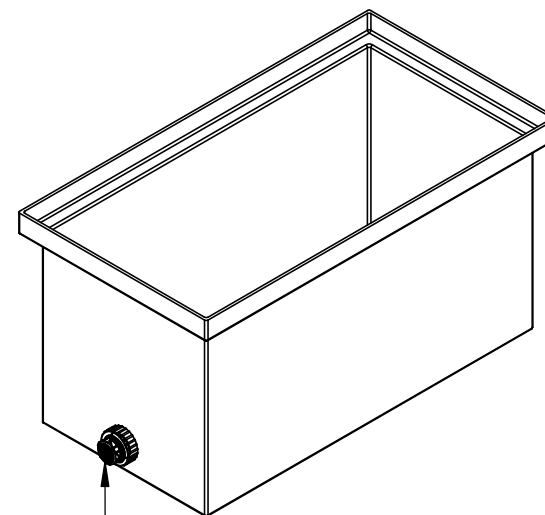
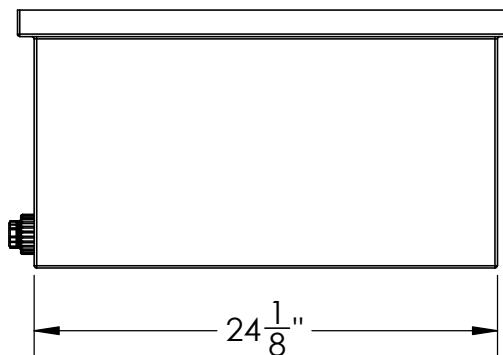
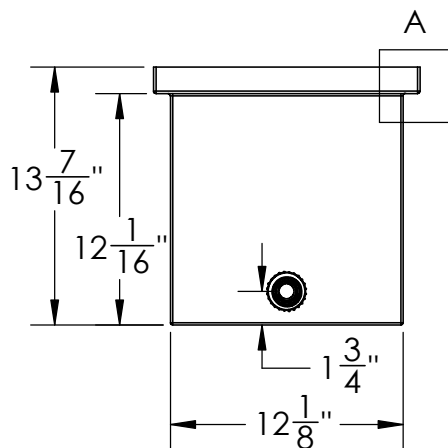


DETAIL A

Catalog options:
Cover #6358, #14829



3/4" Bulkhead
PP Fitting
#970233



15 Gallon PE Rectangular Tank
w/ 3/4" Fitting



1390 Neubrecht Road
Lima, Ohio 45801

STOCK NO.

29314, 29315

REV

A

DO NOT SCALE DRAWING

WEIGHT: 9.6 lbs.

PROPRIETARY AND CONFIDENTIAL

THE INFORMATION CONTAINED IN THIS
DRAWING IS THE SOLE PROPERTY OF
TAMCO. ANY REPRODUCTION IN PART
OR AS A WHOLE WITHOUT THE WRITTEN
PERMISSION OF TAMCO IS PROHIBITED.

MAX. OPERATING TEMP. 140°F
INTERMITTENT SERVICE TO 160°F
SEE CHEMICAL RESISTANCE
CHART FOR COMPATABILITY

DIMENSIONS ARE IN INCHES
TOLERANCE: $\pm 1/4"$

MATERIAL
LLDPE - FDA resin

CAPACITY
15 US gal.

GRADUATIONS
NO

NOMINAL WALL THICKNESS
3/16"

DRAWN

NAME

NJV

DATE

5/29/25

APPROVED

COMMENTS:

Natural, Black
UV Stabilized