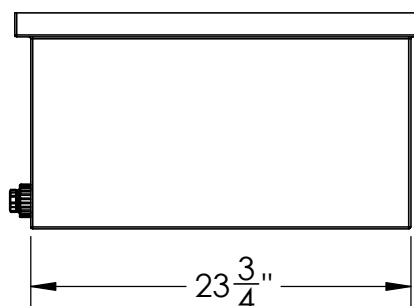
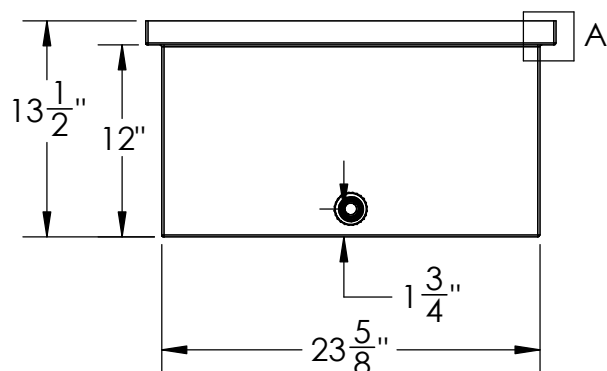
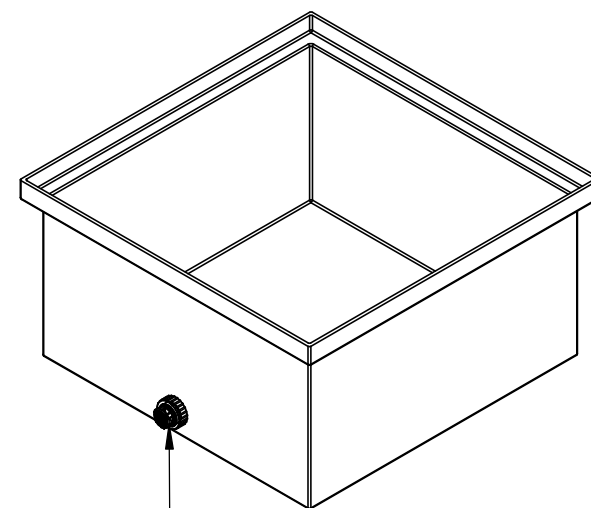


DETAIL A



Catalog options:
Cover #6372, #14837



3/4" Bulkhead
PP Fitting
#970233

30 Gal PE Rectangular Tank
w/ 3/4" Fitting



1390 Neubrecht Road
Lima, Ohio 45801

STOCK NO.

29334, 29335

REV

A

DO NOT SCALE DRAWING

WEIGHT: 16.8 lbs.

PROPRIETARY AND CONFIDENTIAL

THE INFORMATION CONTAINED IN THIS
DRAWING IS THE SOLE PROPERTY OF
TAMCO. ANY REPRODUCTION IN PART
OR AS A WHOLE WITHOUT THE WRITTEN
PERMISSION OF TAMCO IS PROHIBITED.

MAX. OPERATING TEMP. 140°F
INTERMITTENT SERVICE TO 160°F
SEE CHEMICAL RESISTANCE
CHART FOR COMPATIBILITY

DIMENSIONS ARE IN INCHES
TOLERANCE: $\pm 1/4"$

MATERIAL
LLDPE - FDA resin

CAPACITY
30 US gal.

GRADUATIONS
NO

NOMINAL WALL THICKNESS
1/4"

DRAWN

NAME

NJV

DATE

6/5/25

APPROVED

COMMENTS:

Natural, Black
UV Stabilized