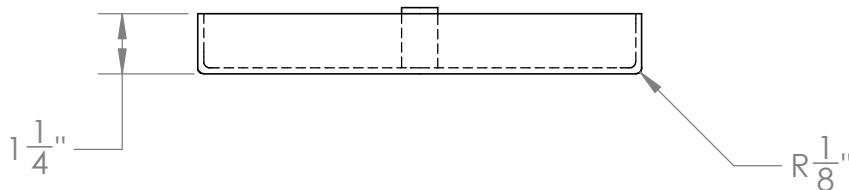
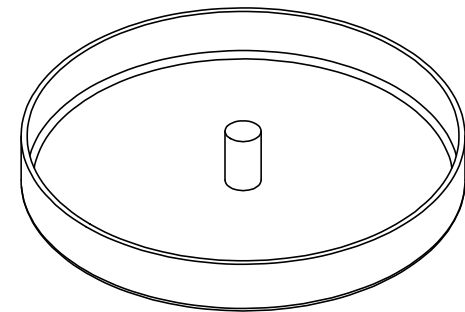
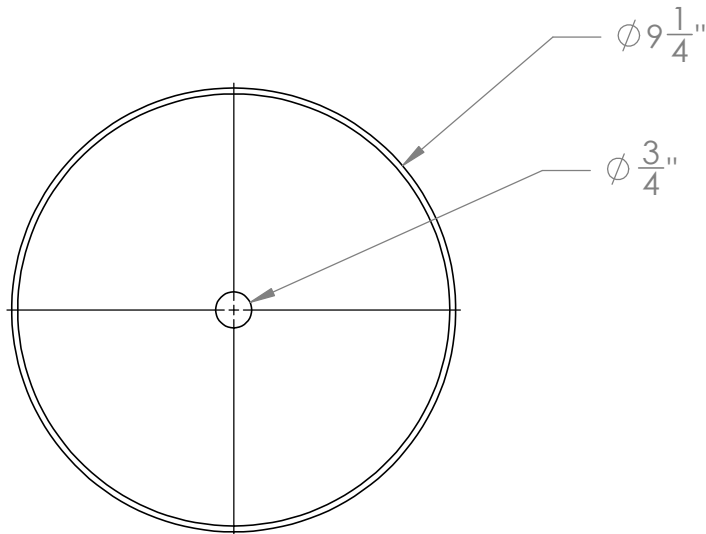


Catalog options:
Tank #4028



Polyethylene Floating
Tank Cover #4038



1390 Neubrecht Road
Lima, Ohio 45801

STOCK NO.

4038

REV

A

DO NOT SCALE DRAWING

WEIGHT: 0.5 lbs.

PROPRIETARY AND CONFIDENTIAL

THE INFORMATION CONTAINED IN THIS
DRAWING IS THE SOLE PROPERTY OF
TAMCO. ANY REPRODUCTION IN PART
OR AS A WHOLE WITHOUT THE WRITTEN
PERMISSION OF TAMCO IS PROHIBITED.

MAX. OPERATING TEMP. 140°F
INTERMITTENT SERVICE TO 160°F
SEE CHEMICAL RESISTANCE
CHART FOR COMPATABILITY

DIMENSIONS ARE IN INCHES
TOLERANCE: $\pm 1/4"$

MATERIAL
LLDPE - FDA resin

CAPACITY
N/A

GRADUATIONS
N/A

NOMINAL WALL THICKNESS
1/8"

DRAWN

NAME

DATE

CDH

06/24/16

APPROVED

BAT

07/14/16

COMMENTS:

Translucent
UV Stabilized