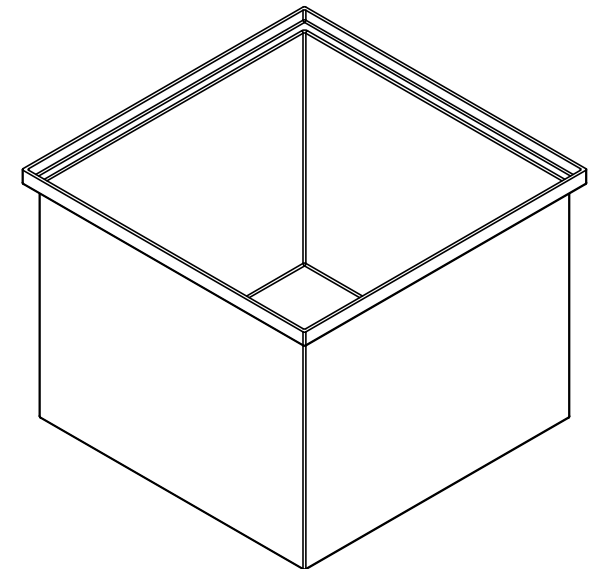
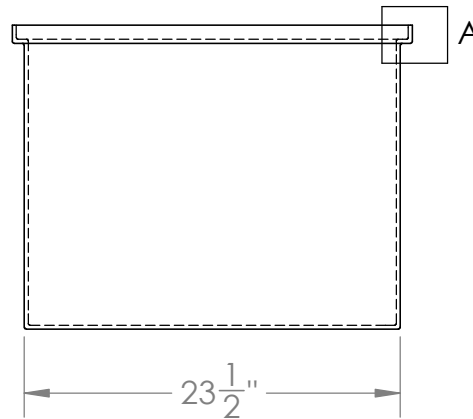
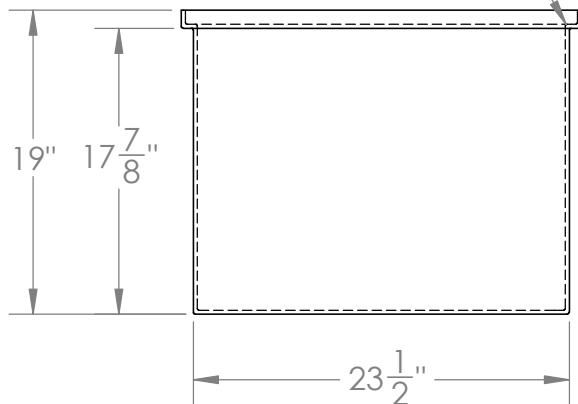


DETAIL A

ALL FILLETS AND
ROUNDS $R\frac{1}{8}$ "



Catalog options:
Cover #6372

Heavy Duty Polyethylene
Tank w/ Internal Flange #6323



1390 Neubrecht Road
Lima, Ohio 45801

STOCK NO.

6323

REV

A

DO NOT SCALE DRAWING

WEIGHT: 25 lbs.

PROPRIETARY AND CONFIDENTIAL

THE INFORMATION CONTAINED IN THIS
DRAWING IS THE SOLE PROPERTY OF
TAMCO. ANY REPRODUCTION IN PART
OR AS A WHOLE WITHOUT THE WRITTEN
PERMISSION OF TAMCO IS PROHIBITED.

MAX. OPERATING TEMP. 140°F
INTERMITTENT SERVICE TO 160°F
SEE CHEMICAL RESISTANCE
CHART FOR COMPATIBILITY

DIMENSIONS ARE IN INCHES
TOLERANCE: $\pm 1/4$ "

MATERIAL
LLDPE - FDA resin

CAPACITY
45 US gal.

GRADUATIONS
NO

NOMINAL WALL THICKNESS
 $1/4$ "

	NAME	DATE
DRAWN	CDH	06/13/16
APPROVED	BAT	07/14/16

COMMENTS:

Translucent
UV Stabilized