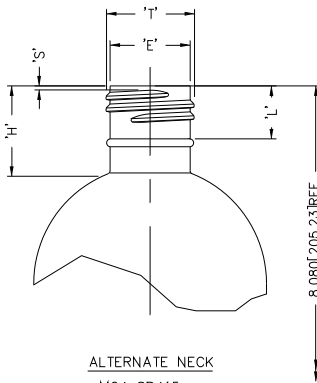


ALTERNATE NECK

M24 SP415(SPEC 'H')

- 'T': .932±.008 [23.67±.20]
- 'E': .848±.008 [21.54±.20]
- 'H': 1.200±.015 [30.48±.38]
- 'S': .046±.015 [1.17±.38]
- 'L': .362 MIN. [9.20 MIN.]

HELIX A : 2°34'
 T.P.I.: 12
 GRAM WT.: 33.5±1.5
 O/F/C: 510.5ml±11

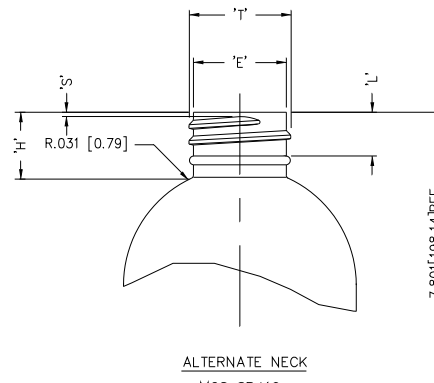


ALTERNATE NECK

M24 SP415

- 'T': .932±.008 [23.67±.20]
- 'E': .848±.008 [21.54±.20]
- 'H': .957±.015 [24.30±.38]
- 'S': .046±.015 [1.17±.38]

HELIX A : 2°34'
 T.P.I.: 8
 GRAM WT.: 32±1.5
 O/F/C: 508ml±11

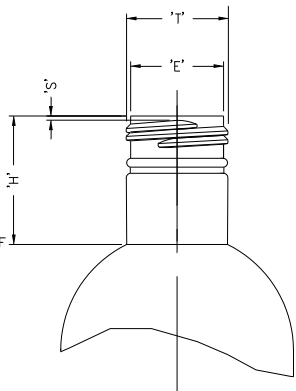
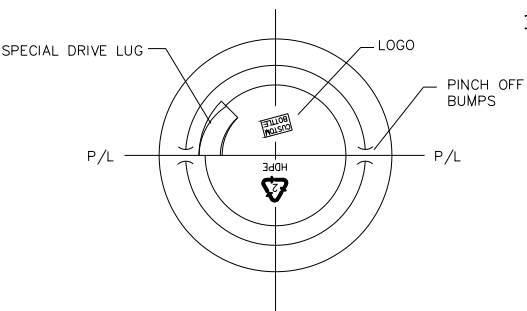


ALTERNATE NECK

M28 SP410

- 'T': 1.078±.010 [27.38±.25]
- 'E': .984±.010 [25.00±.25]
- 'H': .708±.015 [17.98±.38]
- 'L': .463 MIN. [11.76 MIN.]
- 'S': .046±.015 [1.17±.38]

HELIX A : 2°57'
 T.P.I.: 6
 GRAM WT.: 31±1.5
 O/F/C: 508ml±11

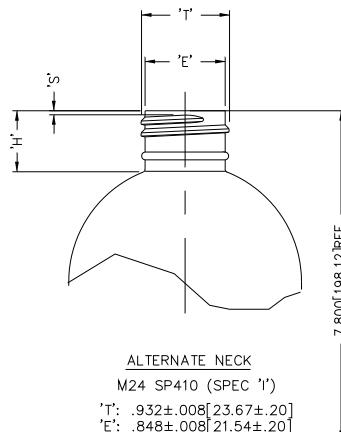


ALTERNATE NECK

M28 SP415(SPECIAL 'H')

- 'T': 1.078±.010 [27.38±.25]
- 'E': .984±.010 [25.00±.25]
- 'H': 1.360±.015 [17.98±.38]
- 'S': .046±.015 [1.17±.38]

HELIX A : 2°57'
 T.P.I.: 12
 GRAM WT.: 34±1.5
 O/F/C: 511.9ml±11



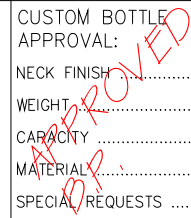
ALTERNATE NECK

M24 SP410 (SPEC 'I')

- 'T': .932±.008 [23.67±.20]
- 'E': .848±.008 [21.54±.20]
- 'H': .677±.015 [17.19±.38]
- 'S': .046±.015 [1.17±.38]

HELIX A : 2°34'
 T.P.I.: 8
 GRAM WT.: 45±1.5
 O/F/C: 510.0ml±11

CUSTOM BOTTLE APPROVAL:
 NECK FINISH:
 WEIGHT:
 CAPACITY:
 MATERIAL:
 SPECIAL REQUESTS:
 CUSTOMER APPROVAL:
 APPROVED BY:
 DATE:



NO.	REV.	BY	DESCRIPTION	DATE	
NECK FINISH: M24 SP410			GRAM WT. 31±2.0		
'T'	'E'	'H'	'S'	'L'	'I'
.932 ±.008	.848 ±.008	.646 ±.015	.046 ±.015	.437 MIN.	
23.67 ±0.20	21.54 ±0.20	16.41 ±0.38	1.17 ±0.38	11.10 MIN.	
HELIX A: 2° 34'			T.P.I.: 8	CUTT. DIA.: .375 [9.53]	
CAPACITY TO FILL LEVEL BEFORE DECORATING				473ml±11	
CAPACITY TO FILL LEVEL AFTER DECORATING					
OVERFLOW CAPACITY BEFORE DECORATING				507ml±11	
OVERFLOW CAPACITY AFTER DECORATING					
		Custom Bottle Inc. 10 Great Hill Road P.O. Box 720 Naugatuck, Connecticut 06770 203-725-6681			
		DRAWN BY: 002 DESC.: 16oz COSMO			
SCALE: 1-1		DATE: FEB.27/06		DRAWING NO.: 107-7252-P	
BOTTLE MAT'L: HDPE		1		MOULD NO.:	
CAD NAME: PD\					

SILK SCREEN PRINTING AREA:
 5.375 [13.65] MAX. HEIGHT
 7.500 [190.50] MAX. CIRCUM.
 (ALLOWS FOR .312 [7.92] BREAK IN COPY)

This drawing subject to standard industry tolerances S.P.I.