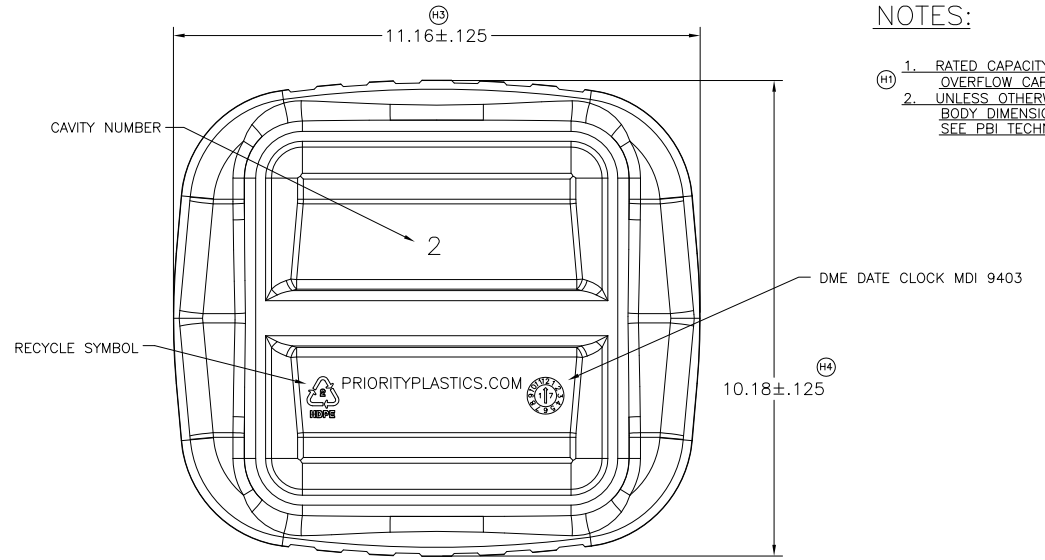
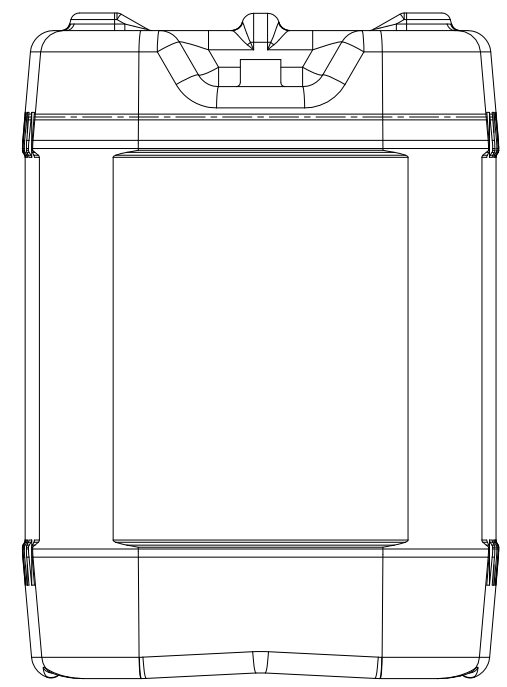
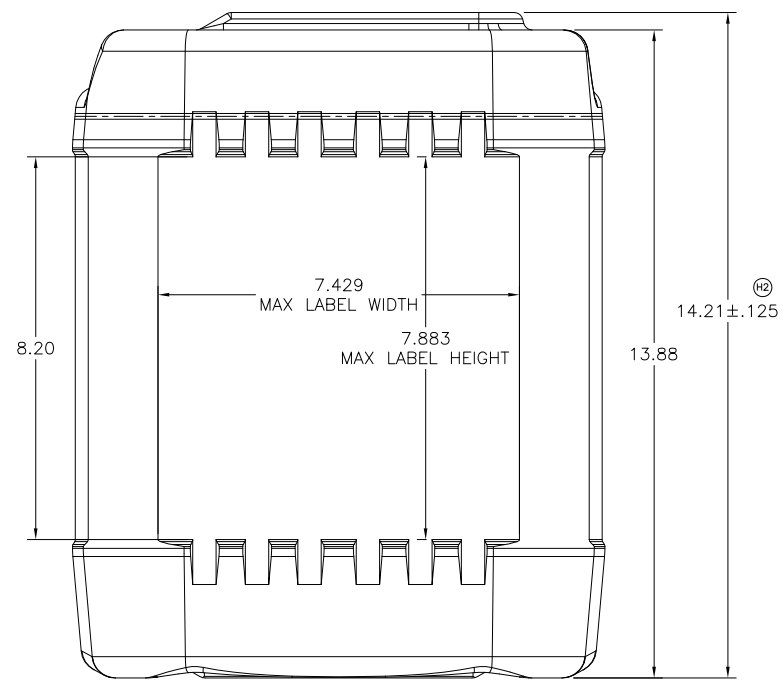
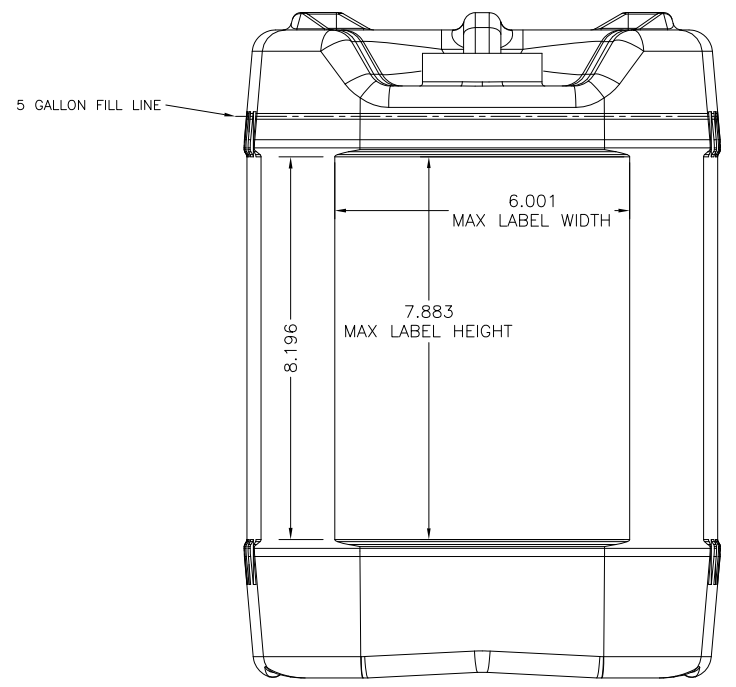
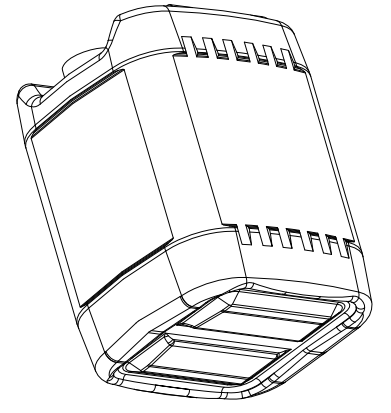
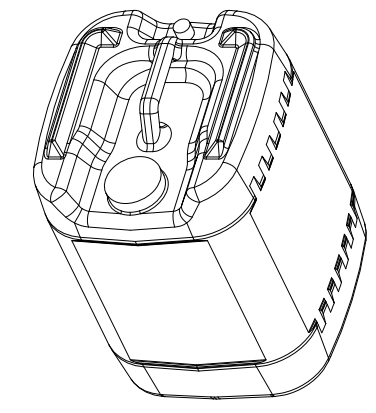
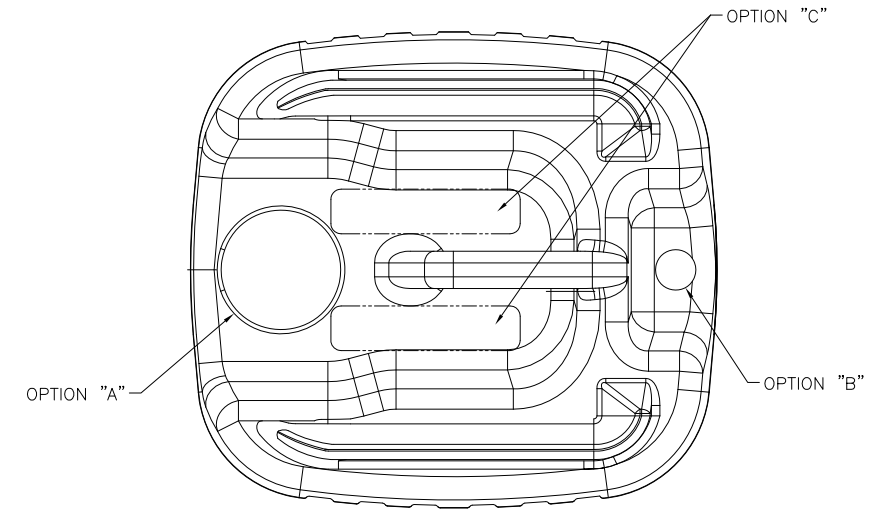


□ - LAYOUT NUMBER
 ○ - CRITICAL CHARACTERISTIC
 ⊙ - KEY CRITICAL CHARACTERISTIC

OPTION	DRAWING	DESCRIPTION
A	7945 SHEET 2	PRIMARY NECK FINISH
B	7945 SHEET 2	SECONDARY NECK FINISH
C	7945 SHEET 2	NAMEPLATES
D	7945 SHEET 1	STANDARD WALL THICKNESS CHART



NOTES:
 1. RATED CAPACITY: 5 GALLONS
 OVERFLOW CAPACITY: 5.1 GALLONS
 2. UNLESS OTHERWISE SPECIFIED, SPI/PBI BODY DIMENSIONAL TOLERANCES APPLY. SEE PBI TECHNICAL BULLETIN PBI2.

OPTION "D"

STANDARD WALL THICKNESS CHART		
CONTAINER	WEIGHT	MIN. WALL THICKNESS
ECO 7945-612	1000g	TOP: .032" SIDE: .038" BOTTOM: .036"
STANDARD NON-REUSABLE 7945-700	1125g	TOP: .037" OTHER: .041" BOTTOM: .039"
STANDARD REUSABLE 7945-210	1150g	TOP: .039" OTHER: .040" BOTTOM: .039"
7945-800	1350g	TOP: .044" OTHER: .044" BOTTOM: .044"
7945-802	1450g	TOP: .044" SIDE: .044" BOTTOM: .044"
7945-400	1550g	TOP: .049" SIDE: .068" BOTTOM: .061"

-	7/22	S	ADDED THICKNESS & WEIGHT CHART	SZ
-	6/22	R	ADDED NECK OPTIONS NOTE	SZ
-	7/08	Q	WAS OLD LOGO	TV
E05-010	5/05	P	"E" 2.565/2.590 WAS 2.548/2.572	ES
-	3/05	O	ADD NECK OPTION "K4"	ES
E05-006	1/05	N	"C" #.31/.36 WAS #.35	ES
E05-004	1/05	M	"C" #.755/.780 WAS #.758/.782	ES
E04-034	12/04	L3	"C" #2.28MIN WAS #2.31	ES
E04-029	12/04	L1	"T" #2.744/2.783 WAS #2.73/2.76	ES
E04-025	7/04	J	"H" DIM. .67-.75 WAS .68-.72	ES
-	6/04	I	UPDATED PRINT DIMENSIONS	ES
02-017	5/02	H4	10.18 ± .125 WAS 11.20	KE
		H3	11.16 ± .125 WAS 11.28	KE
		H2	14.21 ± .125 WAS 14.208	KE
		H1	ADDED OVERFLOW CAPACITY	KE
-	1/02	G	REMOVED MATERIAL	KE
-	12/01	F2	SPECIFIED OPTIONAL WALL THICK	KE
-	11/01	F1	SPECIFIED STD. WALL THICKNESS	KE
-	7/01	E	CHANGED "C" DIM. TO 2.31	KE
-	10/00	C	REDRAWN: WAS 7945-000	DC
ECN.	DATE	LET.	CHANGE	BY

NECK OPTIONS ARE ON DRAWING 7940-2

Priority Plastics Inc. 500 Industrial Park Road
 PORTLAND, INDIANA 47371
 260-726-7000

DRAWING DESCRIPTION:
 5 GALLON CONTAINER
 (BM-184/185)

DRAWING NUMBER:
 7945

SHEET 1 OF 2