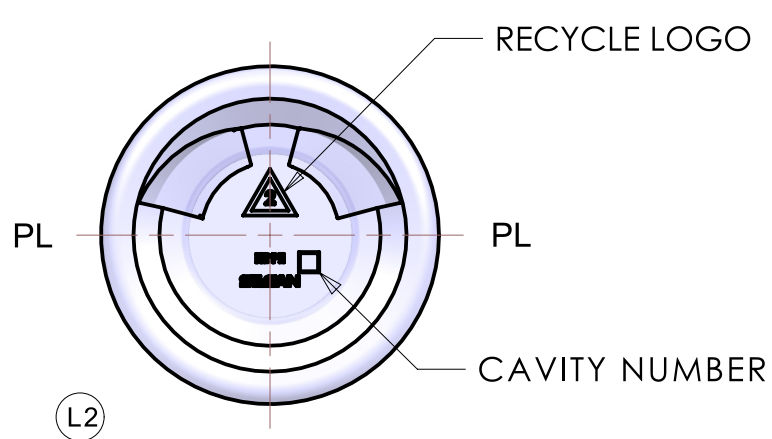
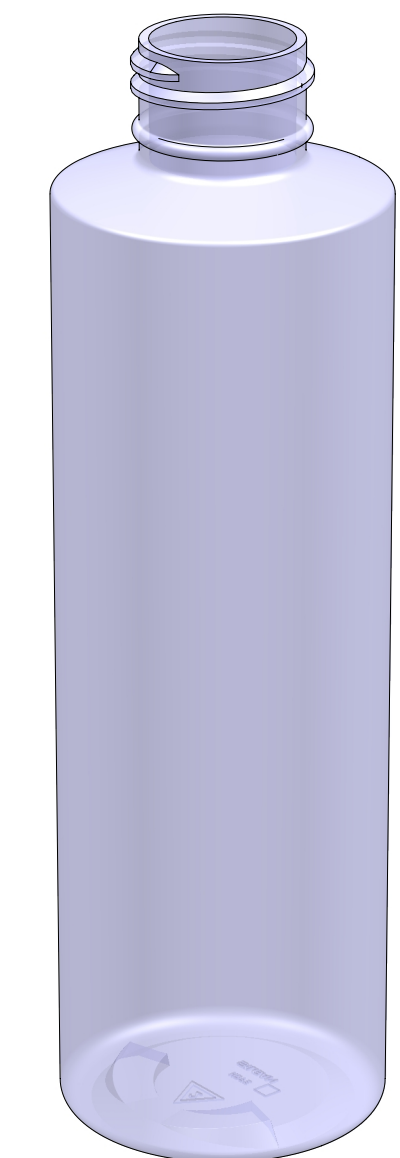
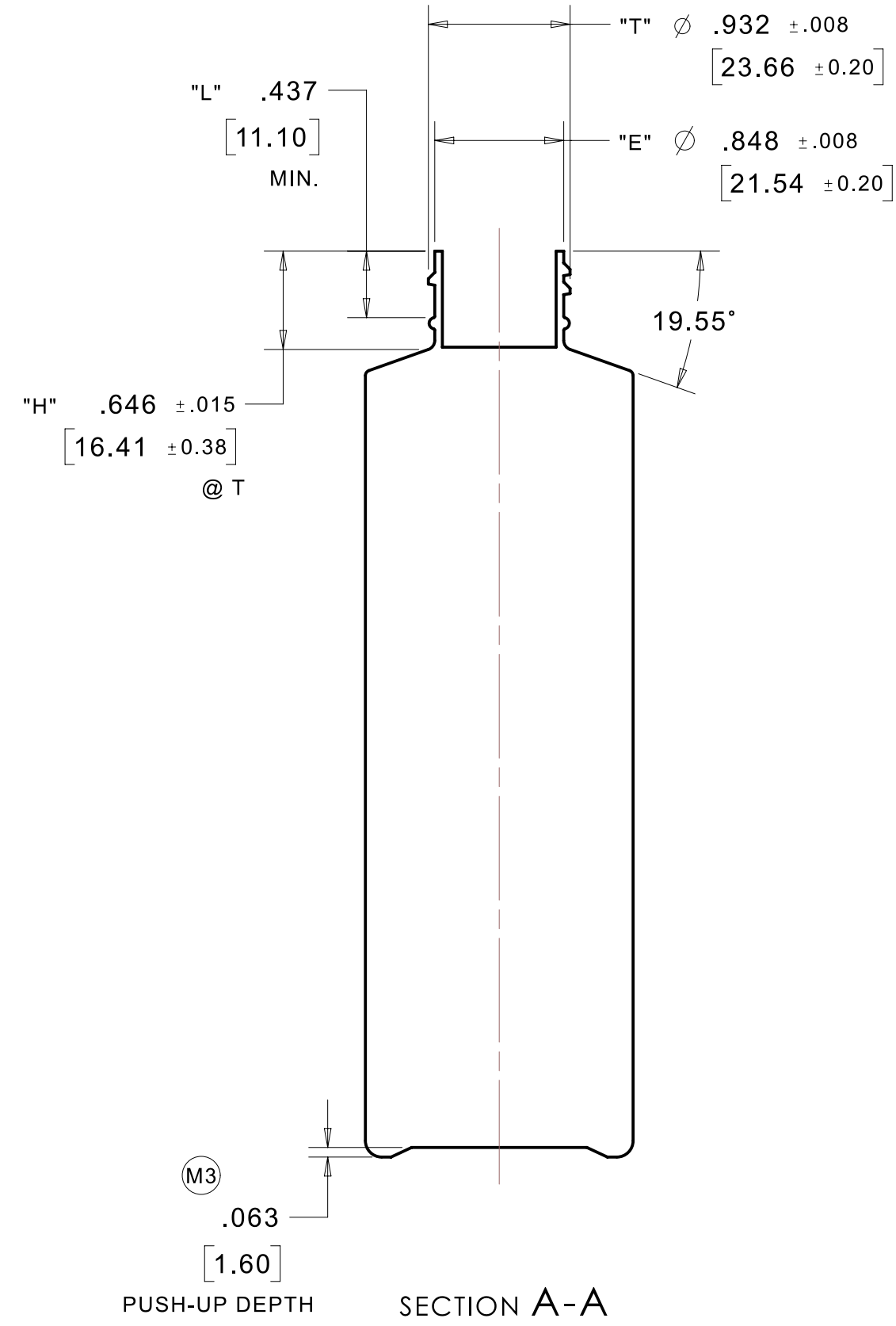
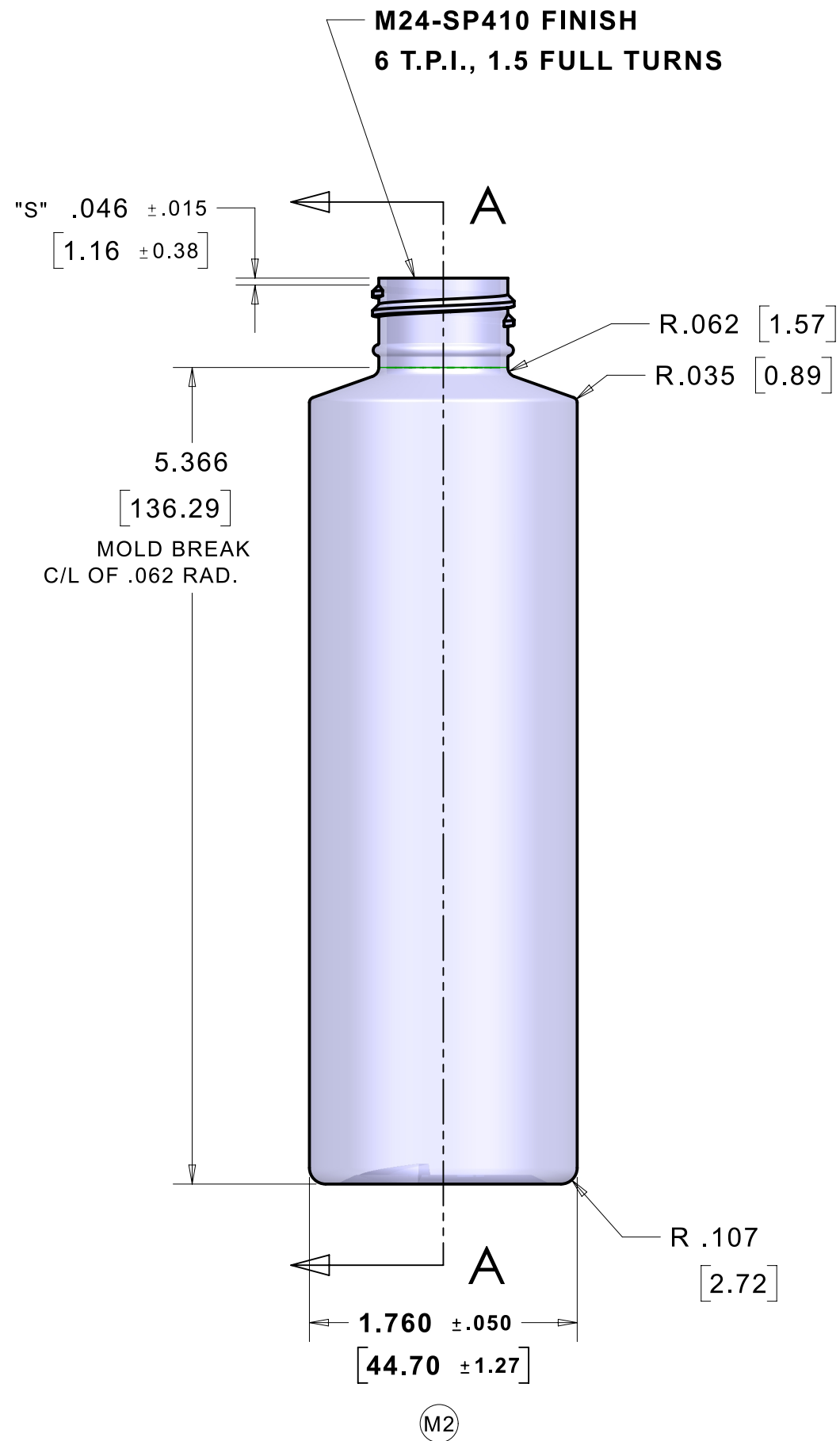
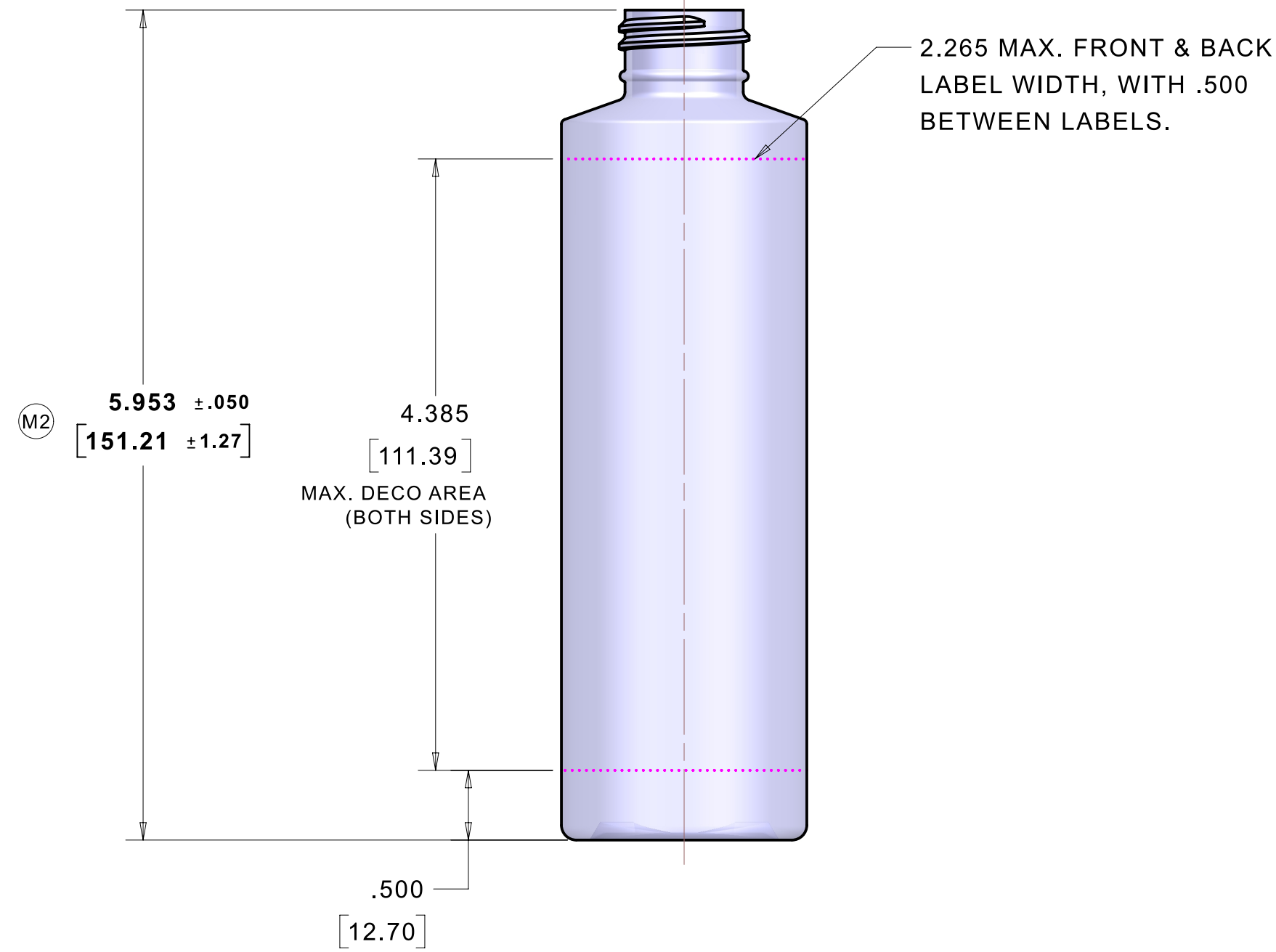
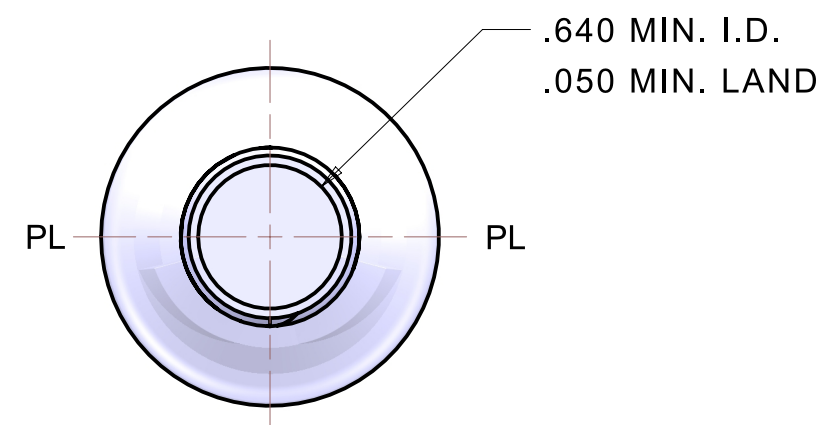


MC-9-4857-U



REVISIONS			
LTR	DESCRIPTION	DATE	REVISED / APPROVED BY:
K	UPDATED TO SILGAN STDS.	28JAN94	JEH
L1	TD31-14552 WAS TD31-12552	07JUL98	CAS
L2	BASE AESTHETICS & LOCATIONS REVISED		
M1	OFC WAS TOL WAS ±.17; 5.0 WEIGHT TOL WAS ±.8		
M2	OAT TOL WAS ±.031; OAH TOL WAS ±.047	17DEC03	JEH
M3	ELIM A/O & F/G OFC, AND PU TOL		
M4	UPDATED TO SILGAN STDS		
N	ADDED CODES & CHART	20MAY05	KENT
P	ADDED LABEL DWG#	27OCT08	KENT
R	TOOL # WAS TD31-14552	24MAR11	KENT
S	CREATED 3D MODEL; UPDATED 2D DWG; ADDED TOOL NO. 18691	12OCT18	MKR
T	ADDED BOTTLE CODE "HDM 66610" TO CHART	2/28/2019	RBC / RVANDE
U	REMOVED "TEMPORARY" NOTE FROM DWG.	03/20/2020	MKR / MKROBI

PRODUCT CODE	TOOL NO.
6 HDM 66610	
5 HDM 66575	
4 HDM 66573	
3 PCM 66564	
2 HDM 66552	2 18691
1 HDM 66234	1 16762

DIMENSIONAL CONDITION IS: AFTER TREAT		MATERIAL: HDPE	PROCESS: BDS	CUSTOMER: SILGAN PLASTICS
OVERFLOW CAPACITY: 6.67 ± .20 FL.OZ. (197.2 ± 6.0 ML.)	REF. DWG: MC-9-4857-R	BLOWN AREA: 34.898 IN^2	DECO DWG: P-04969-01	DESCRIPTION: 6 FL. OZ. REG. CYLINDER
WEIGHT: 14.0 ± 1.0 GRAMS	GEOMETRY: ASSOCIATIVE - 3D	TOOLING: AS SHOWN	SCALE: 1:1	COMMERCIAL DEVELOPMENT 1854 SHACKLEFORD CT. SUITE 425 NORCROSS, GA 30093
THIS DRAWING HAS BEEN PREPARED BY SILGAN PLASTICS FOR OUR OWN PRODUCTION OF THE ARTICLE SHOWN AND MAY NOT BE COPIED OR UTILIZED BY OTHERS WITHOUT OUR PRIOR WRITTEN CONSENT.		CAD / SIZE: NX12 / D	DATE: 04OCT18	