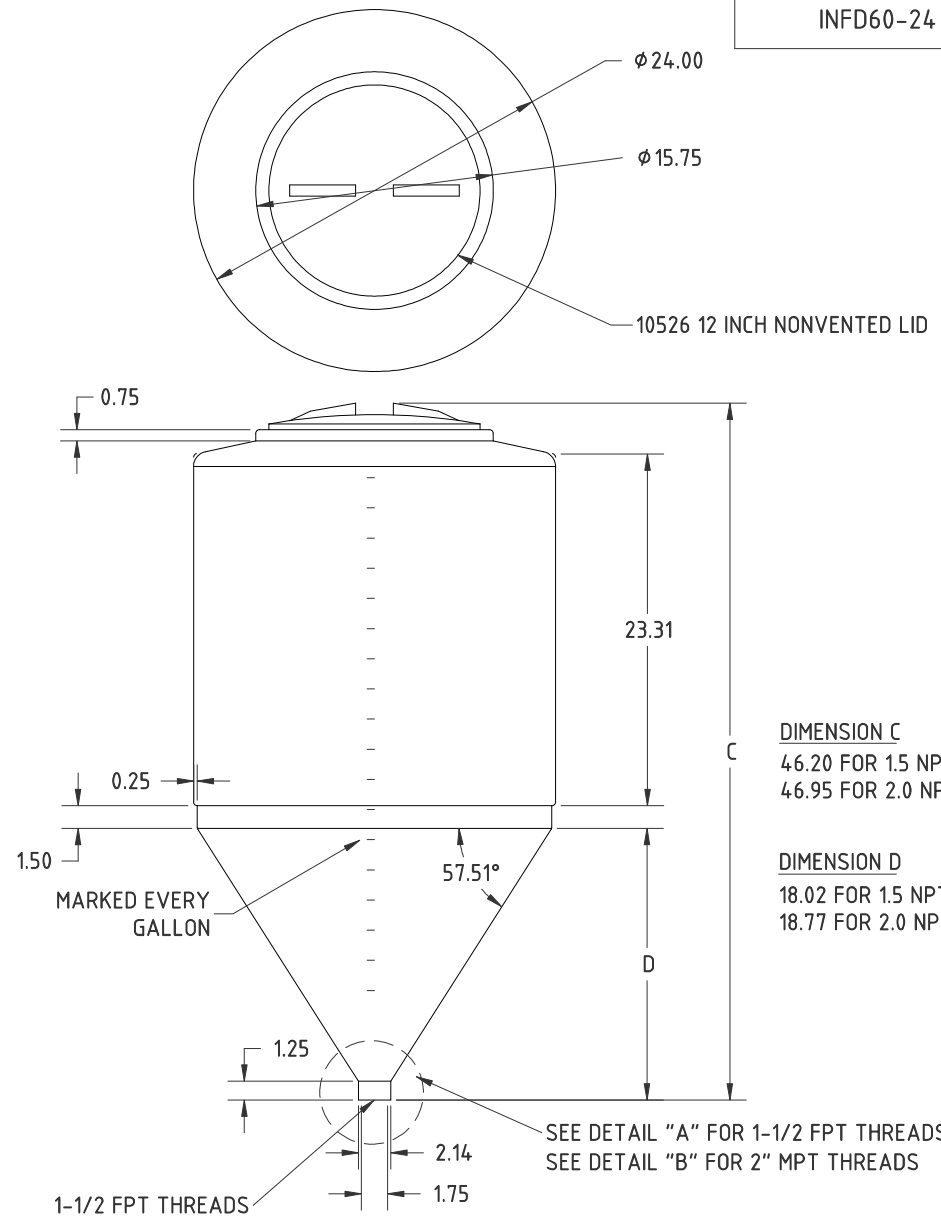
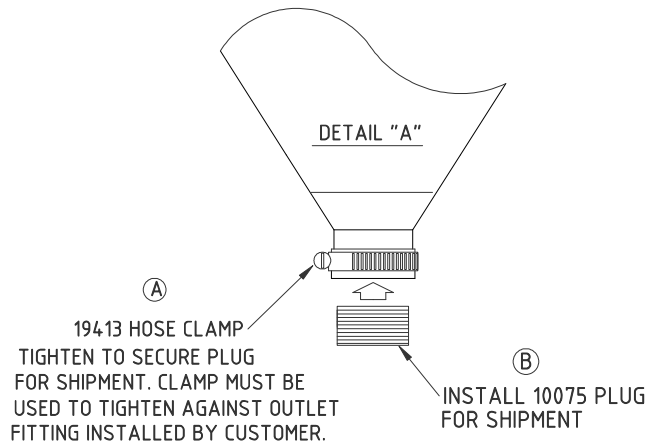
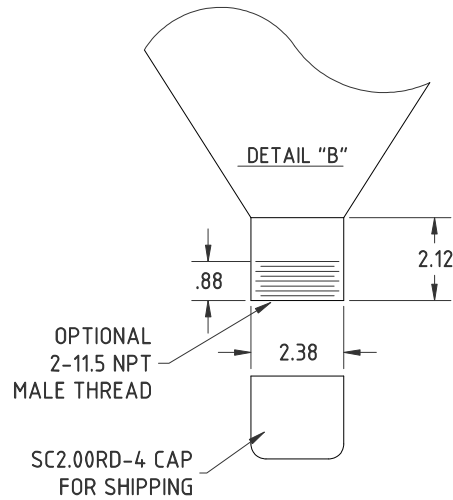


Copyright. All information furnished within this document, electronic file or design correspondence is the property of Den Hartog industries, Inc. and shall not be used, disclosed to others or copied without the expressed written consent of Den Hartog Industries, Inc.



**DIMENSION C**  
46.20 FOR 1.5 NPT OUTLET  
46.95 FOR 2.0 NPT OUTLET

**DIMENSION D**  
18.02 FOR 1.5 NPT OUTLET  
18.77 FOR 2.0 NPT OUTLET

C	ADDED 2 INCH MALE THREAD OPTION	DHJ 8/15/11	2269	DRAWN / DATE	MATERIAL MEDIUM DENSITY POLYETHYLENE
B	10075 PLUG WAS 19412	ADH 1/28/08	1579	DHJ 4/10/05	
A	CORRECTED PART NUMBER	DHJ 5/24/07		APPRD. / DATE	
REV	DESCRIPTION	BY / DATE	CCN	REH 3/14/06	
ALL DIMENSIONS ARE IN DECIMAL INCHES TOLERANCES UNLESS OTHERWISE SPECIFIED		THIRD ANGLE PROJECTION ANSI 14.5M		SHOT WEIGHT: 22 LBS.	NOTES: 1. .22 WALL
POLYETHYLENE		METAL		SHIPPING WEIGHT: 24 LBS.	
±1% @ 68° F		DECIMAL ± .125" FRACTION ± 1/4" ANGLE ± 1°		FINISH:	



**Den Hartog**  
INDUSTRIES, INC.

Ace Roto-Mold Injection Molding Blow Molding Sowjoy  
4010 HOSPERS DRIVE S. BOX 425, HOSPERS, IOWA 51238-0425

DESCRIPTION 60 GALLON INDUCTOR (FULL DRAIN)

SCALE N.S.

PART NO. INFD60-24