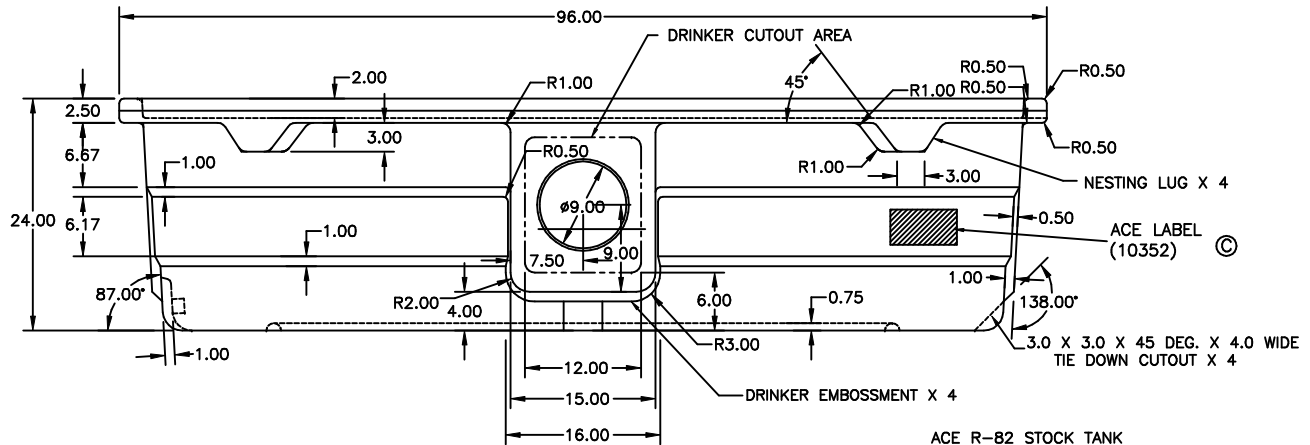
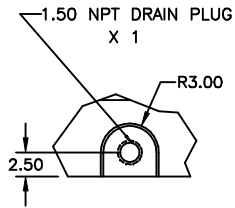
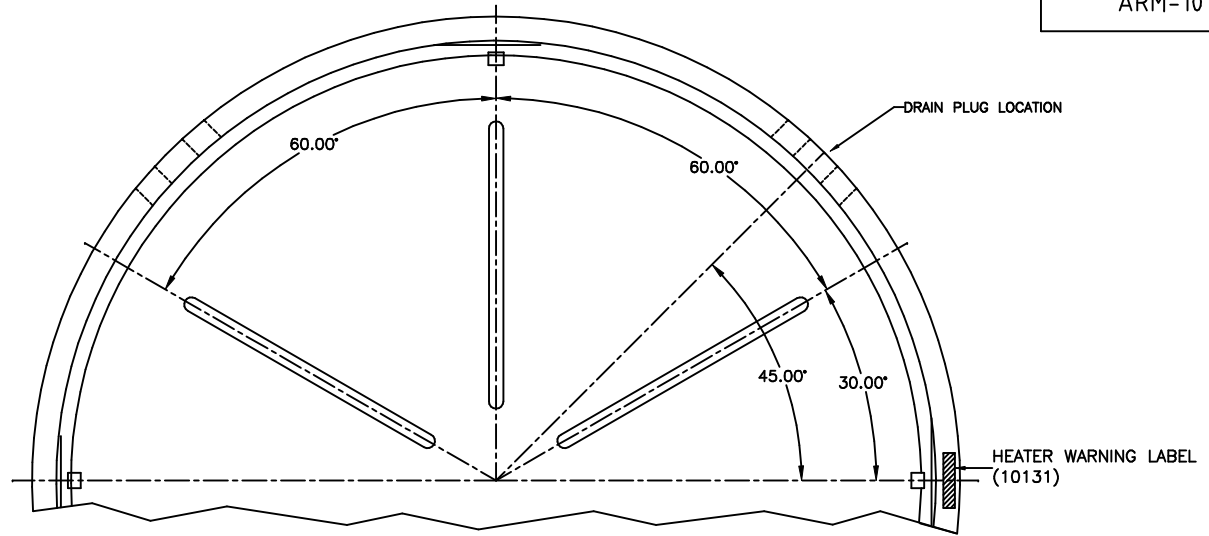


Copyright. All information furnished within this document, electronic file or design correspondence is the property of Den Hartog Industries, Inc. and shall not be used, disclosed to others or copied without the expressed written consent of Den Hartog Industries, Inc.



ACE R-82 STOCK TANK
10/2/98

MAX. CAPACITY - LEVEL = 610 U.S. GAL.

C	LABEL NUMBER ADDED, DRAWING TEMPLATE UPDATED	ADH 8/31/09	1916	DRAWN / DATE	MATERIAL 1.) POWDER, 5 MELT STD:10577
B	CAPACITY CORRECTED	10/03/01		REH/10/2/98	
A	WAS 95 LB.	BY / DATE		APPRD. / DATE	
REV	DESCRIPTION	BY / DATE	CCN	ADH 8/31/09	
ALL DIMENSIONS ARE IN DECIMAL INCHES TOLERANCES UNLESS OTHERWISE SPECIFIED		THIRD ANGLE PROJECTION ANSI 14.5M		SHOT WEIGHT: 105 LBS	NOTES: 1.) NDM. WALL = .220 2. STD. COLOR TO BE FOREST GREEN
POLYETHYLENE		METAL		SHIPPING WEIGHT:	
±1% @ 68 ° F		DECIMAL ± .125" FRACTION ± 1/4" ANGLE ± 1°		FINISH:	



Den Hartog
INDUSTRIES, INC.

Ace Roto-Mold Injection Molding Blow Molding SowJoy
4010 HOSPERS DRIVE S. BOX 425, HOSPERS, IOWA 51238-0425

DESCRIPTION	ACE / R82 POLY STOCK TANK	
SCALE	N.S.	PART NO. ARM-10139