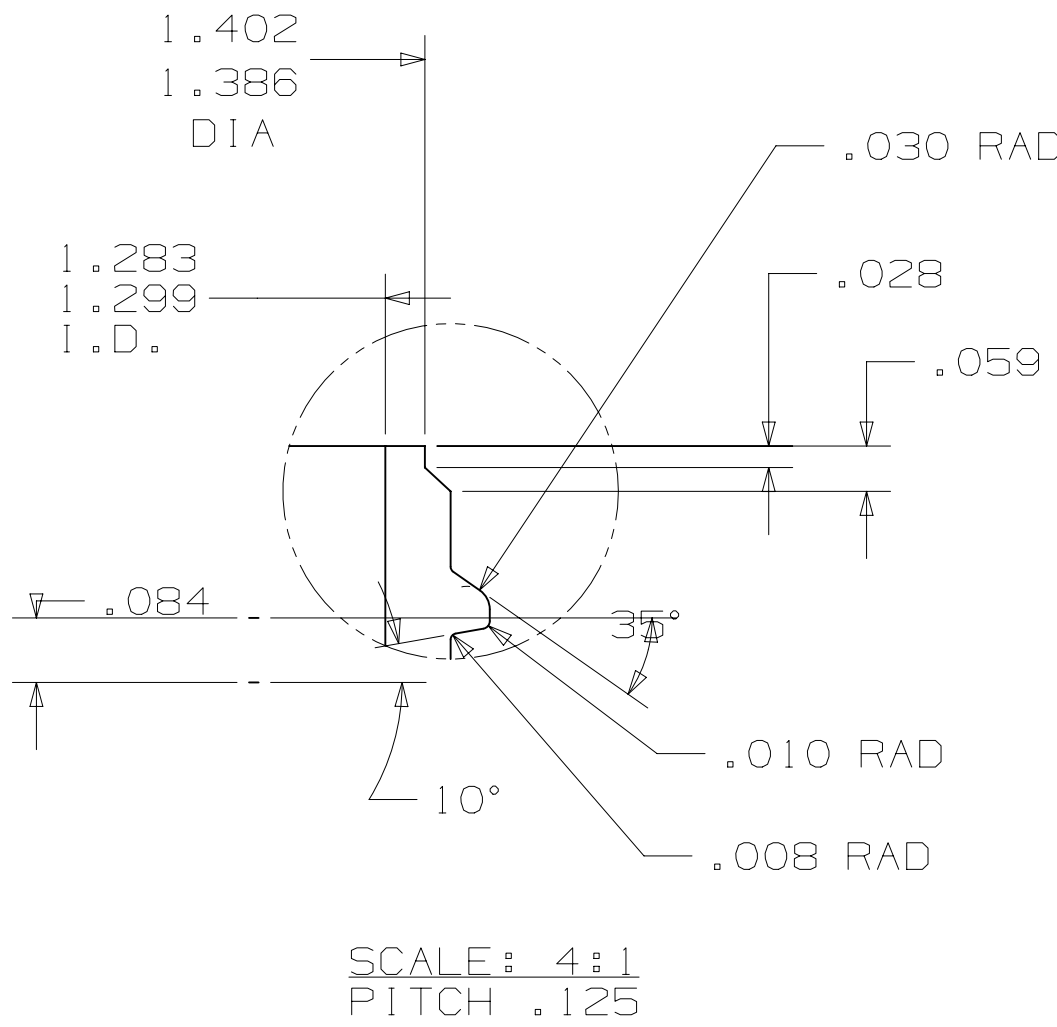
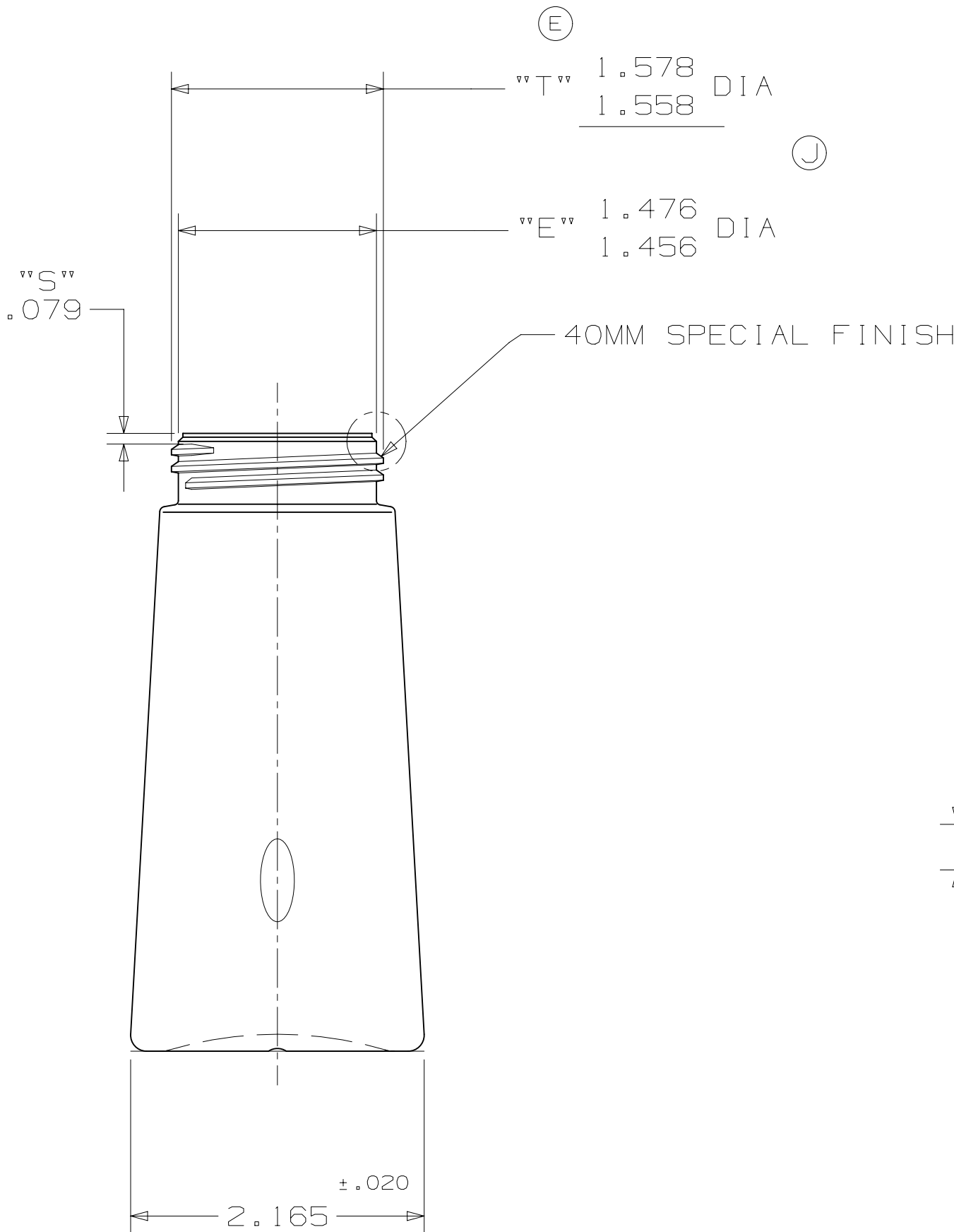
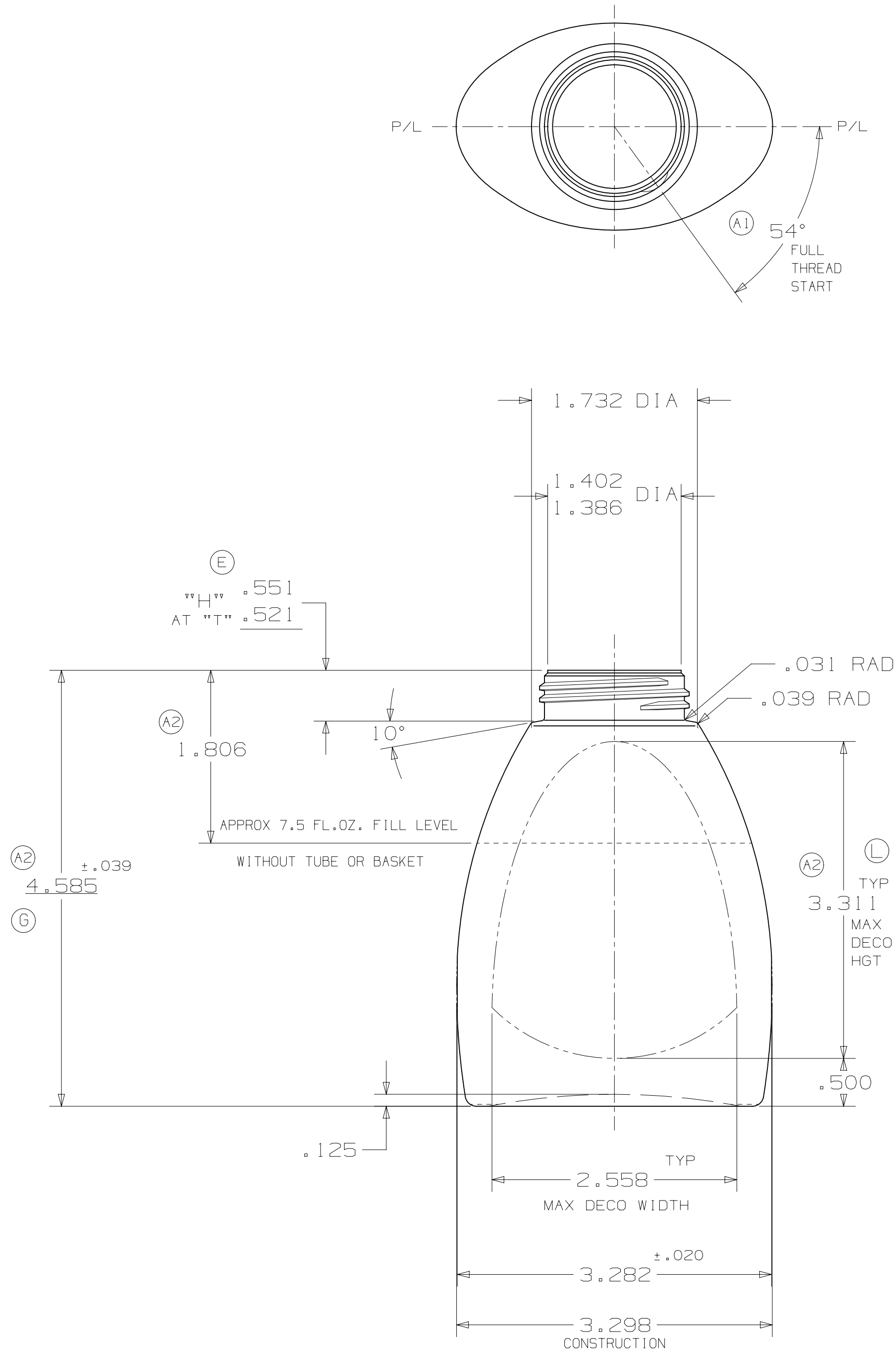
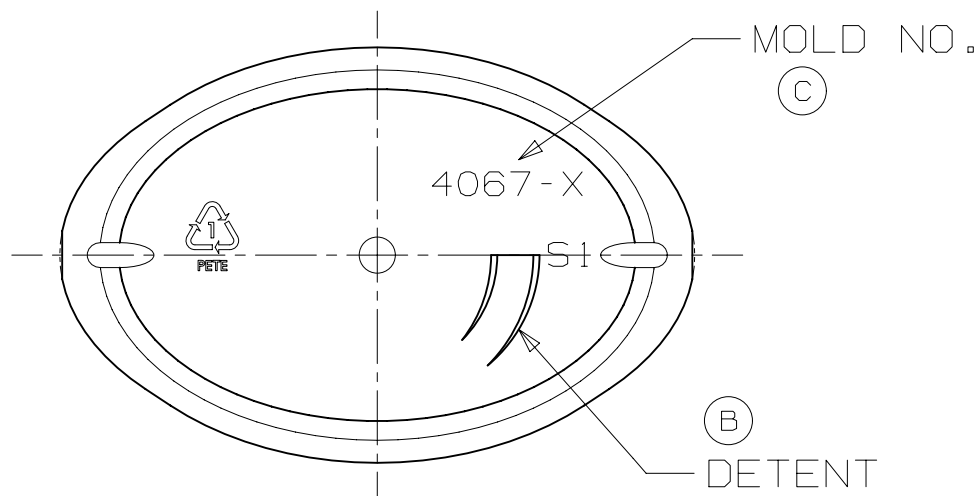


D-00-5155-L

REVISIONS			
LTR	DESCRIPTION	DATE	APPROVED
A1	OFC WAS 10.22/302.0, 54° WAS 20°		
A2	REDUCED BODY HEIGHT .122 FOR VOLUME	8/22/02	JEH
B	DETENT REVISED PER ACTUAL BOTTLE	9/6/02	JEH
C	ADDED MOLD NO. & NOTE #3	8OCT02	KENT
D	CODE PREFIX WAS OOC/CUSTOMER WAS AIRSPRAY INT'L	4NOV02	KENT
E	"H" WAS .530/.523, "T" WAS 1.571/1.555, RFP	12/26/02	JEH
F	ADDED LABEL DWG #	15MAY03	KENT
G	OAH WAS 4.555	12APR05	KENT
H	WGT WAS 24.0/ADDED CODE ZOM-45334 & CHART	4JAN06	KENT
J	T WAS 1.578/1.548, E WAS 1.469/1.453	28JAN08	KENT
K	CHG'D LABEL DWG/ADDED CODES	1SEP13	KENT
L	REVISED DECO AREA	21MAY15	KENT



- NOTES :
- (A1) 1) OVERFLOW CAPACITY : 9.94 ± .30 FL.OZ. (294.0 ± 9.0 CC'S.)
- 2) WEIGHT : (H) 24.4 ± 2.0 GRAMS
- (C) 3) MIN. WALL: .008



- (K) 4) ZOM-45406  
(H) 3) WOM-45389  
2) ZOM-45334  
1) OOM-45213  
CODE CHART

DIMENSIONS SHOWN ARE: <input checked="" type="checkbox"/> AS MOLDED <input type="checkbox"/> AFTER TREAT <input type="checkbox"/> AFTER TREAT & OVEN	DRAWN BY KENT	MATERIAL PET	CUSTOMER (D) SILGAN PLASTICS
	DATE 21JUN02	QUOTE NO.	DESCRIPTION 40MM OVAL 3
	INFO. m5155-A	LABEL DWG. NO. P-02365-06-A REF. DWG. NO. S-1680-B	(F) (K) (L) F-MOULD 250ML
	THIS DRAWING HAS BEEN PREPARED BY SILGAN PLASTICS FOR OUR OWN PRODUCTION OF THE ARTICLE SHOWN AND MAY NOT BE COPIED OR UTILIZED BY OTHERS WITHOUT OUR PRIOR WRITTEN CONSENT.	TOOLING NO. 6043 CAD UG SCALE FULL	(D)  TECHNICAL CENTER 1858 MECA WAY NORCROSS, GA 30093 DRAWING NO. D-00-5155-L