

# PROPRIETARY DATA

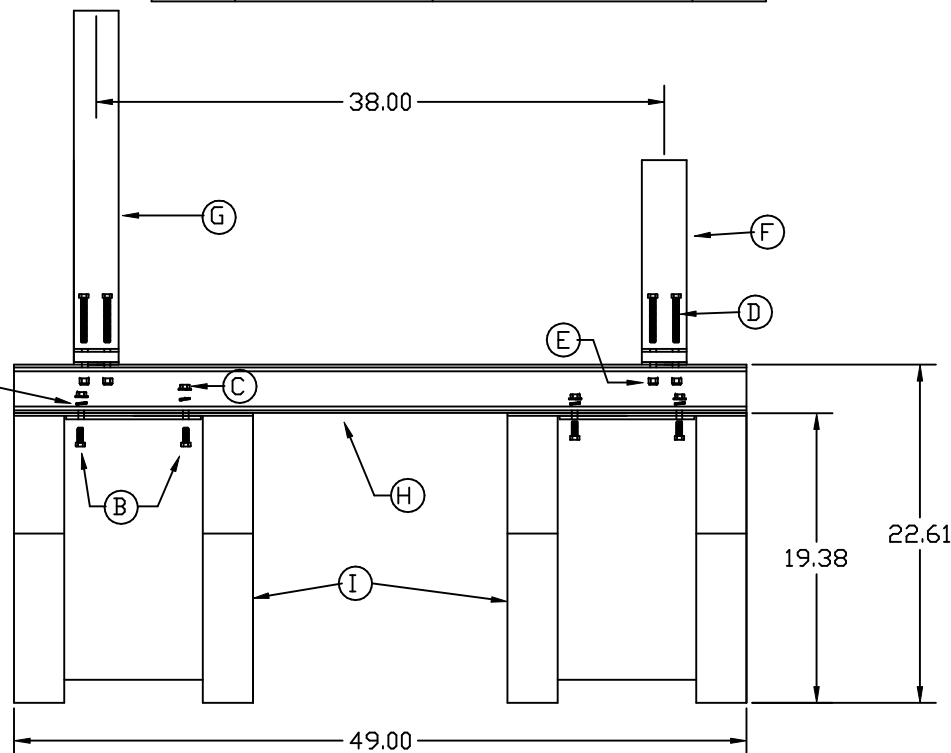
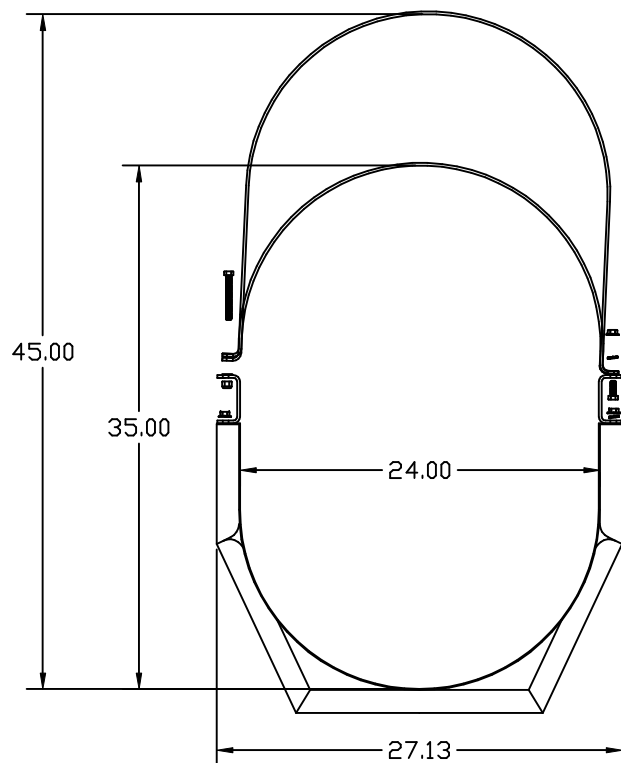
PROPERTY OF ACE ROTO-MOLD MFG., INC. INFORMATION FURNISHED HEREIN IS THE PROPERTY OF ACE ROTO-MOLD MFG., INC. AND SHALL NOT BE USED, DISCLOSED TO OTHERS, OR COPIED WITHOUT THE EXPRESSED WRITTEN CONSENT OF ACE ROTO-MOLD MFG., INC. ALL RIGHTS RESERVED.


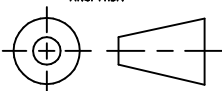
## MATERIAL/PART SCHEDULE

CAW0200-C

A

KEY	PART/DRAWING #	DESCRIPTION	QTY.
	CAW250-BUNDLE	Parts A-H	1
A	SJ10023	3/8 SPLIT LOCK WASHER	12
B	SJ10089	3/8 X 1 HEX GRADE 5 BOLT	12
C	SJ11093	3/8 - 16 HEX GRADE 5 NUT	12
D	SJ10097	3/8 X 3 HEX BOLT	4
E	SJ10949	3/8 ZINC PLATED NUT	4
F	STRAP	3 X 42.5 14 GA. MILD STEEL	1
G	STRAP	3 X 62 - 14 GA. MILD STEEL	1
H	CROSSBAR	6 X 49 X 3/16 MILD STEEL	2
I	CAW200/250-BASE		2



		DRAWN / DATE NVE 7/25/05		MATERIAL		 <b>ACE ROTO-MOLD</b> A DIVISION OF DEN HARTOG INDUSTRIES, INC. 4018 HWY. 60 BLVD., BOX 421, HOSPERS, IOWA 51238	
A	TOLERANCE WAS 1% @ 68° F	3/9/07	GWC	APPRD. / DATE DHJ 12/9/05			
REV	DESCRIPTION	DATE	APPRD			CLIENT / DESCRIPTION	CRADLE ASSEMBLY FOR 200 GALLON CUT AWAY APPLICATOR TANK
ALL DIMENSIONS ARE IN DECIMAL INCHES TOLERANCES UNLESS OTHERWISE SPECIFIED DECIMAL +/- .125" FRACTION +/- 1/4" ANGLE +/- 1°				THIRD ANGLE PROJECTION ANSI 14.5M 		SCALE	N.S.
				NOTES: BLACK COLOR - POWDER COATED		PART NO.	CAW0200-C