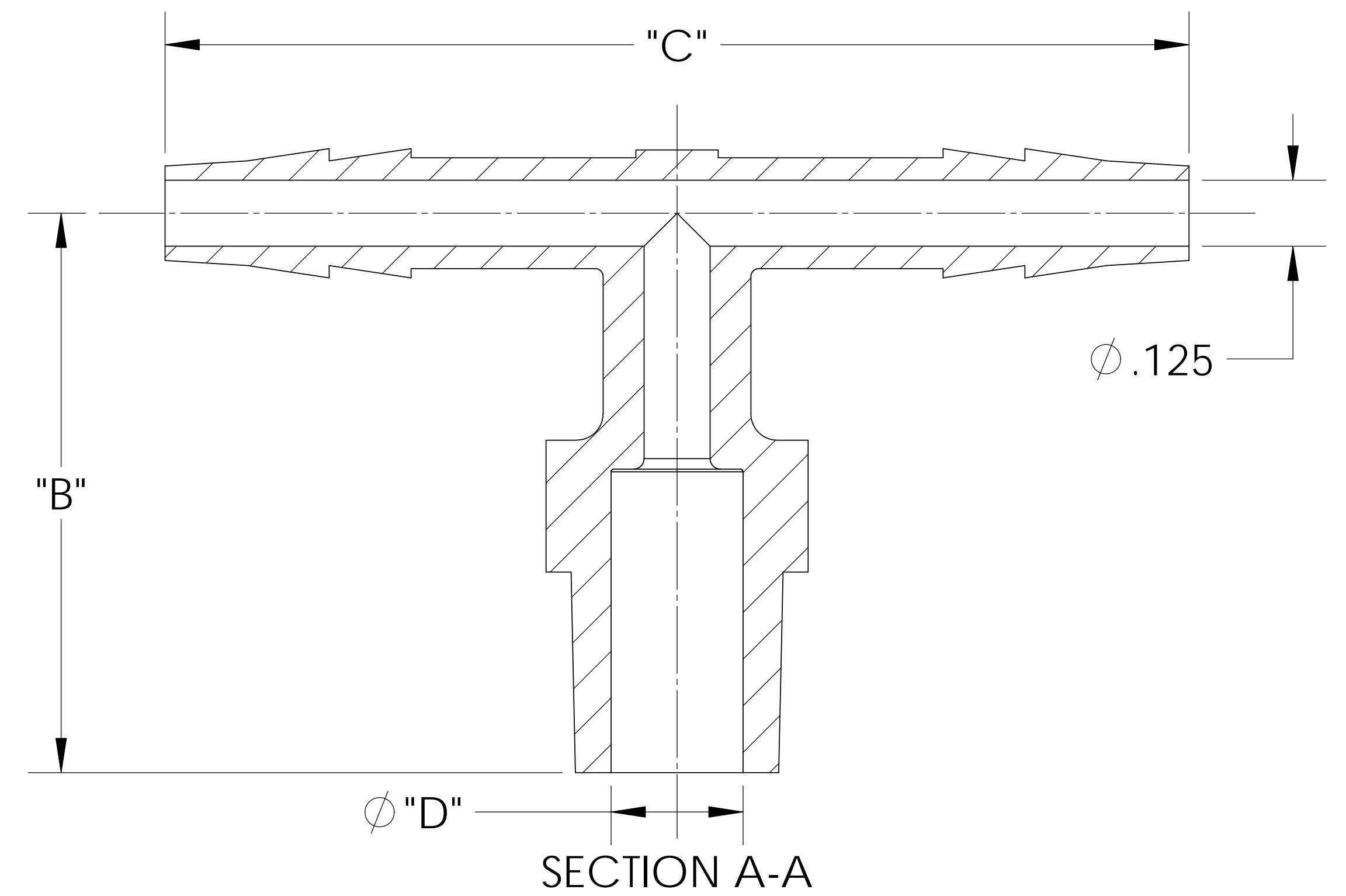


MALE 1/8"-27 NPT



NOTES:

- 1) POLYPROPYLENE HAS COLOR OPTIONS:  
BLACK = TT3233/PPB  
NATURAL = TT3233/PPN

SHOWN

CATALOG NO.	DESCRIPTION	MATERIAL	DIM "A"	DIM "B"	DIM "C"	DIM "D"	DIM "E"	DIM "F"	DIM "G"
TT3233/PP	1/8" X 3/16" X 3/16" PP	POLYPROPYLENE	.25	.240	.37	.245	.423	.245	.43
TT3233/P	1/8" X 3/16" X 3/16" P	POLYETHYLENE	.24	.240	.36	.245	.425	.245	.42
TT3233/N	1/8" X 3/16" X 3/16" N	NYLON	.25	.245	.38	.248	.430	.250	.43

**PROPRIETARY AND CONFIDENTIAL**  
THE INFORMATION CONTAINED IN THIS DRAWING IS THE SOLE PROPERTY OF THOGUS PRODUCTS COMPANY. ANY REPRODUCTION IN PART OR AS A WHOLE WITHOUT THE WRITTEN PERMISSION OF THOGUS PRODUCTS COMPANY IS PROHIBITED.

REV	WRO#	DESCRIPTION
D	95.00132	CONVERTED TO 3D FORMAT
HISTORY		

UNLESS OTHERWISE SPECIFIED:  
DIMENSIONS ARE IN INCHES  
TOLERANCES:  
ANGULAR:  $\pm 0.5^\circ$   
X.X =  $\pm 0.1$   
X.XX =  $\pm 0.05$   
X.XXX =  $\pm 0.015$   
REMOVE ALL SHARP EDGES AND BURRS  
BLEND ALL RADII TO 0.01IN  
INTERPRET GEOMETRIC TOLERANCING PER: ANSI Y 14.5 1994  
MATERIAL: PP, P, N  
FINISH: NA  
THIRD ANGLE PROJECTION:

	NAME	DATE
DRAWN	JRM	05/25/11
CHECKED	KDJ	05/25/2011
ENG APPR.	JM	05/26/2011
MFG APPR.	ML	05/26/2011
Q.A.	NJW	05/26/2011

**Thogus** You think it, we can make it.  
33490 PIN OAK, AVON LAKE, OH 44012

TITLE: 1/8" NPT X 3/16" BARB X 3/16" BARB TEE

SIZE <b>B</b>	DWG. NO. TT3233	REV <b>D</b>
SCALE: 2:1	MASS:	SHEET 1 OF 1

DO NOT SCALE DRAWING