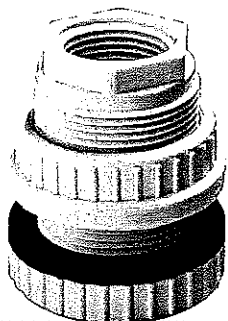
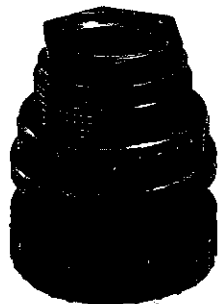


# TANK ADAPTERS & BULKHEAD FITTINGS



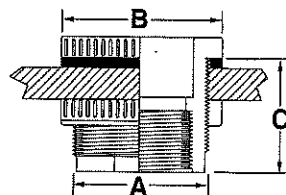
## STANDARD HEAVY-DUTY BODY STYLE

### FEATURES

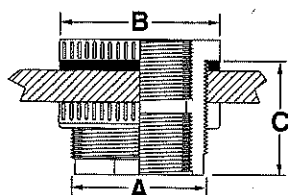
- Designed for easy adaptation and a free flow of liquids for tank or drum drainage or filling, or as outlets for distribution into a piping system, these Ryan Herco molded tank adapters withstand many times the most extreme service requirements.
- Assembly to a tank is simple: Cut a hole in the tank wall (using a hole saw) to the "A" dimension shown below for your fitting size. Remove the locknut from the fitting, leaving the EPDM gasket on the body. Insert the body through the hole in the tank from the inside, trapping the washer between the tank wall and the shoulder of the tank adapter. Screw the locknut back onto the body for a tight, leak-free installation.

### ORDER INFORMATION:

7020.(Size No.) PVC TANK ADAPTER, socket x thread  
7022.(Size No.) PVC TANK ADAPTER, thread x thread  
7024.(Size No.) POLYPRO TANK ADAPTER, socket x thread  
7026.(Size No.) POLYPRO TANK ADAPTER, thread x thread



White Polypro tank adapter.



PVC tank adapter.

### HEAVY-DUTY DIMENSIONS

PIPE SIZE	DIMENSIONS		
	A	B	C
1/2	1-1/4	2-1/8	2-3/8
3/4	1-5/8	2-5/16	2-3/8
1	1-7/8	2-9/16	2-3/8
1-1/4	2-5/16	3-5/16	2-3/4
1-1/2	2-9/16	3-9/16	2-3/4
2	3-3/16	4-1/16	2-3/4

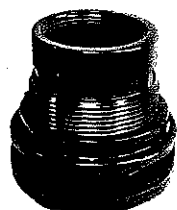
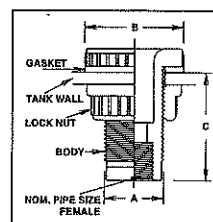
Size No.	Nominal Size	PVC		White Polypro	
		Soc x Thd 7020	Thd x Thd 7022	Soc x Thd 7024	Thd x Thd 7026
005	1/2" FNPT	\$14.98	\$19.14	\$22.60	\$27.97
007	3/4" FNPT	\$16.42	\$19.26	\$23.97	\$29.26
010	1" FNPT	\$17.64	\$21.75	\$25.02	\$30.09
012	1-1/4" FNPT	\$21.23	\$26.31	\$32.58	\$38.93
015	1-1/2" FNPT	\$25.50	\$30.36	\$35.31	\$41.81
020	2" FNPT	\$29.96	\$35.68	\$40.82	\$48.31

Box quantity discounts are available, contact your local Ryan Herco Service Center for details.

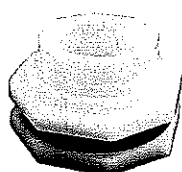
# TANK ADAPTERS & BULKHEAD FITTINGS

### FEATURES

- Heavy-Duty: Designed for easy adaptation and a free flow of liquids for tank or drum drainage or filling, or as outlets for distribution into a piping system, these RHFS molded tank adapters withstand many times the most extreme service requirements.
- Assembly to a tank is simple: cut a hole in the tank wall (using a hole saw) to the "A" dimension shown below for your fitting size. Remove the lock nut from the fitting, leaving the EPDM gasket on the body. Insert the body through the hole in the tank from the inside, trapping the washer between the tank wall and the shoulder of the tank adapter. Screw the lock nut back onto the body for a tight, leak-free installation.



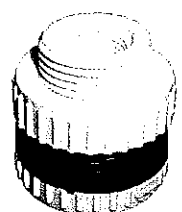
Heavy-duty PVC 3-6"



Heavy-duty Polypro 3-4"



PVC 1/4 & 3/8"



Polypro 1/4 & 3/8"

### HEAVY-DUTY DIMENSIONS

PIPE SIZE	DIMENSIONS		
	A	B	C
1/4	7/8	1-7/16	1-1/8
3/8	1	1-7/16	1-1/8
3	4-1/2	6-1/2	4-5/8
4	5-1/2	7-1/2	4-1/2
6	7-7/8	9-15/16	

### ORDER: 7000.(Size No.) PVC TANK ADAPTER

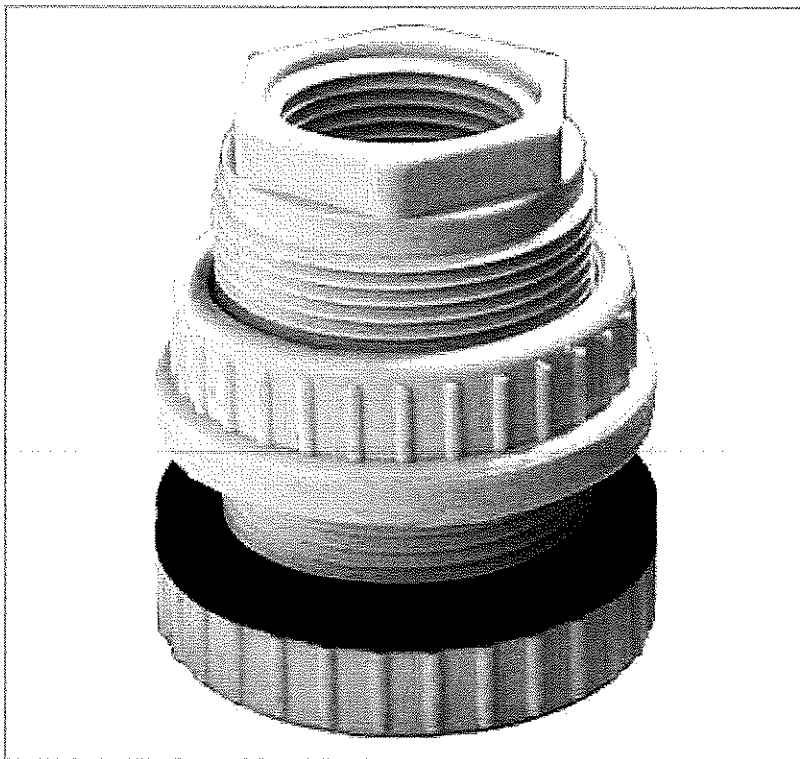
Size No.	Nominal Size	Connections	Price Each
002	1/4" FNPT	Soc x Thd	\$13.42
003	3/8" FNPT	Soc x Thd	\$14.17
030	3" FNPT	Soc x Thd	\$156.77
040	4" FNPT	Soc x Thd	\$308.81
060	6" FNPT	Soc x Thd	\$599.42

### ORDER: 7004.(Size No.) POLYPRO TANK ADAPTER

Size No.	Nominal Size	Connections	Price Each
002	1/4" FNPT	Soc x Thd	\$18.98
003	3/8" FNPT	Soc x Thd	\$19.73
030	3" FNPT	Thd x Thd	\$160.30
040	4" FNPT	Thd x Thd	\$300.05

**MORE STYLES &  
SIZES AVAILABLE**

**RHFS.com** 399

**PP TANK ADPT 1/2" S X T**

PRICE: \$ 45.30 /EACH

QTY: 

In Stock

**Specifications**[Click to request a quote or call us at 1.800.848.1141](#)

Product Group	Heavy-Duty Tank Bulkhead Fitting
Manufacturer	M & A Plastics
Manufacturer's part number	7024.005
Material	Polypro
Nominal Size	1/2"
Connections	Soc x MPT/FPT
Color	White
Seals	EPDM
Weight (lb)	0.130
Maximum Temperature (°F)	200

**Quick Order**

Item #	Qty
--------	-----