

# TIE DOWN TAB

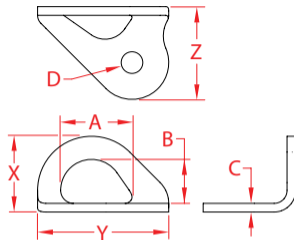
## 304 STAINLESS STEEL



Import



Stamped



ITEM	A	B	C	D	X (height)	Y (length)	Z (width)	WLL (lb)	WT (lb)	PACKAGING TYPE	EACH (qty)	INNER (qty)	CARTON (qty)	UPC
23949	1.31"	0.80"	0.16"	0.39"	1.38"	2.39"	1.69"	1,120	0.15	POLYBAG	1	10	300	791506062332

**NOTE:**

**TIE DOWN TAB HAS A SINGLE MOUNTING HOLE AND ROTATES 360°. MOUNTING FASTENER IS NOT INCLUDED. NEVER USE FOR LIFTING APPLICATIONS. ALL DIMENSIONS ARE NOMINAL (+/- 3%) AND ARE SUBJECT TO CHANGE WITHOUT NOTICE.**