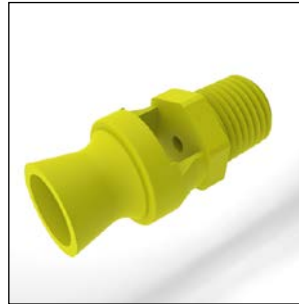
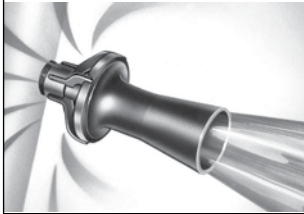




TMP PLASTIC EDUCTORS



EDUCTOR PRINCIPLES:

BEX eductors use a unique venturi design which enables smaller pumps to circulate large volumes of tank solution. The eductor will circulate four to five gallons of solution for each gallon pumped.

BEX eductors are used for mixing chemicals, suspending solids, adjusting pH, "sweeping" debris or sludge toward a filter intake and many other useful applications.

CONSTRUCTION:

Standard materials are glass filled polypropylene and PVDF.

TYPICAL APPLICATIONS:

- Plating Tanks
- Cleaning Tanks
- Phosphating Tanks
- E-coat Tanks
- Fertilizer Tanks
- Pulp Tanks
- Sludge Tanks
- Paint Booths
- Anodizing Tanks
- Cooling Towers
- Decorative Fountains

MOLDED PLASTIC MODELS



DIMENSIONS

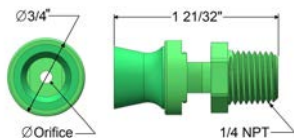
MODEL NUMBER	Pipe Size	Dim. L	Dim. D
T00MP	1/4 NPT Male	3 1/8	1 1/2
T0MP	3/8 NPT Male	4 1/2	2 1/8
T2MP	3/4 NPT Male	6 3/8	3
T3MP	1 NPT Male	8 1/2	3 3/4
T4MP	1 1/2 NPT Male	9 7/8	4 5/8

EDUCTOR CIRCULATION RATIO OF SUPPLY TO DISCHARGE IS 1:5

The capacity table provides the flow of water through the nozzle orifice. To determine total discharge, multiply this value by five (5).

Model	Max. Free Passage (in)	CAPACITY AT VARIOUS PRESSURES (USGPM)							
		10 psi	15 psi	20 psi	25 psi	30 psi	35 psi	40 psi	50 psi
T00MP	0.188	3.2	3.9	4.5	5.0	5.5	5.9	6.3	7.1
T0MP	0.288	7.5	9.2	10.6	11.9	13.0	14.0	15.0	16.8
T2MP	0.386	13.5	16.5	19.1	21.0	23.0	25.0	27.0	30.0
T3MP	0.481	21.0	26.0	30.0	33	36	39	42	47
T4MP	0.612	33	40	47	52	57	62	66	74

MINI PLASTIC MODELS



Model	Color	Max. Free Passage (in)	CAPACITY AT VARIOUS PRESSURES (USGPM)							
			10 psi	15 psi	20 psi	25 psi	30 psi	35 psi	40 psi	50 psi
TMMP6	Red	0.059	1.34	1.65	1.86	2.12	2.29	2.47	2.64	2.94
TMMP11	Green	0.079	1.77	2.18	2.50	2.81	3.07	3.16	3.5	3.8
TMMP18	Blue	0.098	1.97	2.41	2.63	3.07	3.3	3.7	3.9	4.4
TMMP26	Yellow	0.118	2.08	2.56	2.88	3.2	3.5	3.8	4.2	4.6