



CK5127-13635 55 Gallon Drum Level Kit

Continuous Level Sensor & Panel Meter for 55 Gallon Drums

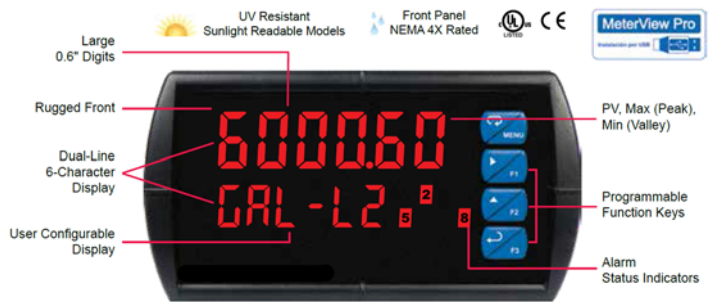
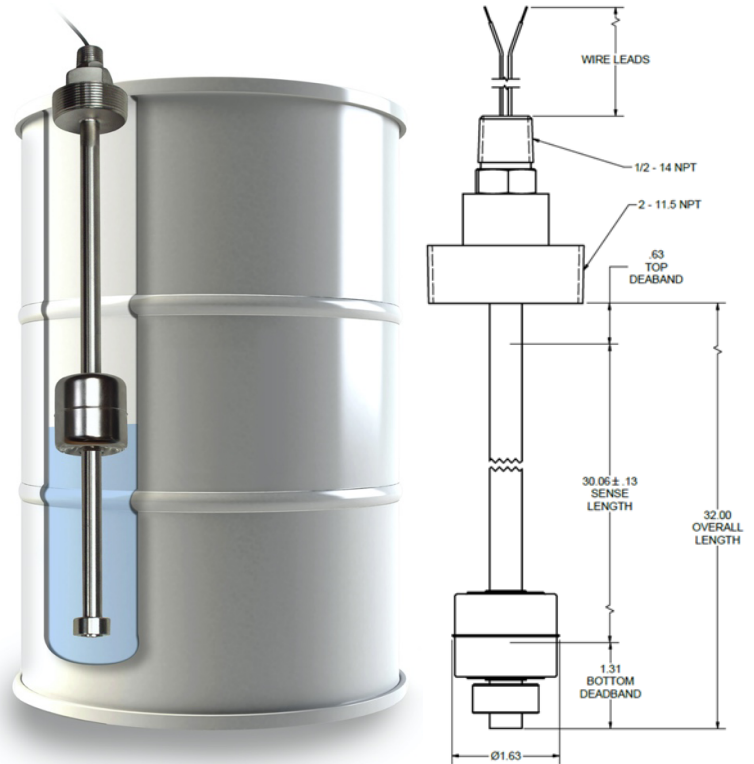
Madison Company's CK5127-13635 kit accurately indicates the level within standard 55 Gallon Drums when installed through the 2" NPT bung fitting. The 32" Continuous Float Level Sensor measures from the top of the barrel to within 2" of the bottom, while the digital Panel Meter displays the present value. This kit is preprogrammed for turn key reading within the sensor range by percent, and includes two programmable relays pre-set for 10% and 90%. They can be field configured for any desired values for alarms or pump control, and the readout can be displayed in gallons, inches, or % as desired. This durable 316 Stainless Steel model is ideal for applications from lube oils to chemicals. Other custom sensor models and lengths available, or configure your own sensor, and pair it with one of our stock panel meters to create your own custom tank kit.

Features: C4651-13636 - Continuous Level Float Sensor

- Durable 316 Stainless Steel Construction
- 1/4" resolution
- 32" Overall length (30" Sense Length)
- 2" NPT fittings
- 12-30 VDC Input Power
- 4-20mA Output
- 221°C (105°F) Operating Temperature
- 120 PSI Pressure
- CE, cULus

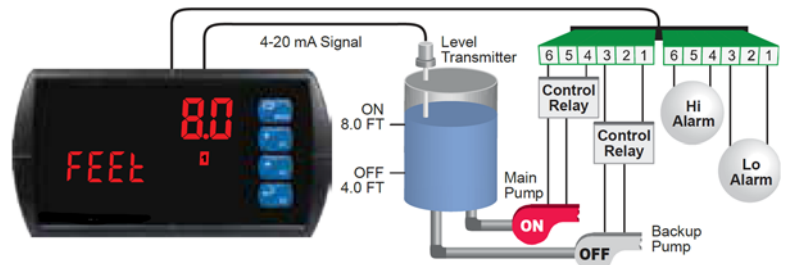
Features: Panel Meter

- 1/8 DIN Digital Panel Meter with NEMA 4X, IP65 Front
- 0-20 mA, 4-20 mA, 0-5 V, 1-5 V, and ±10 V Selectable Inputs
- Dual-Line 6-Digit Display, 0.6" (15 mm) & 0.46" (12 mm)
- Isolated 24 VDC @ 200 mA Transmitter Power Supply
- 2 Relays with Interlocking Capability
- Free PC-Based MeterView Pro USB Programming Software
- Operating Temperature Range: -40 to 65°C (-40 to 150°F)
- UL & C-UL Listed. E160849; 508 Industrial Control Equipment
- Input Power 85-265 VAC
- Display Input in Two Different Scales
- Multi-Pump Alternation Control



Applications:

- 55 Gallon Drums, Totes, & Tanks
- Oils, Chemicals and Waste Fluids
- Food and Drink processing



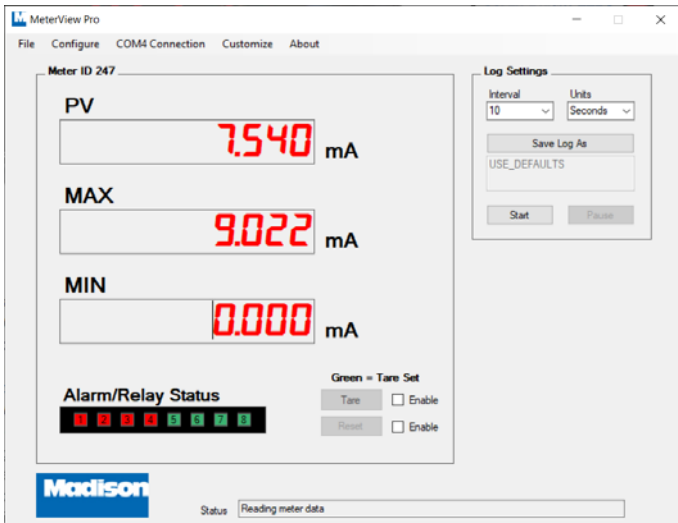
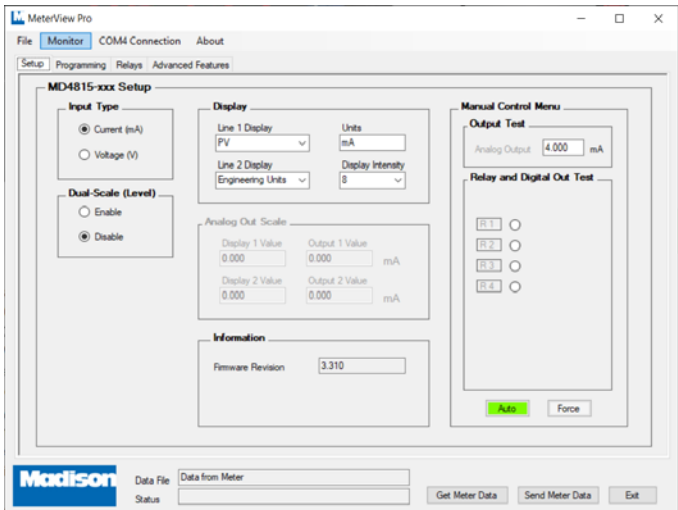
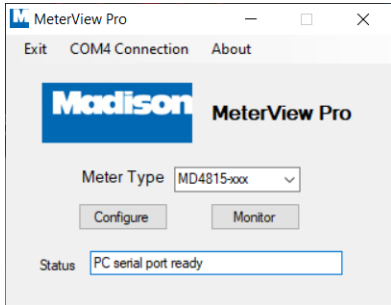
Madison Company

Tel: (203)-488-4477

www.madisonco.com


<mailto:info@madisonco.com>

METERVIEW PRO SOFTWARE SETUP





FRONT PANEL SETUP




 **Menu Button** – Use this button to access *Programming Mode* and to return to *Run Mode*.

Note: If you think you have made a mistake while programming the meter, use this button to return the meter to *Run Mode* without saving.

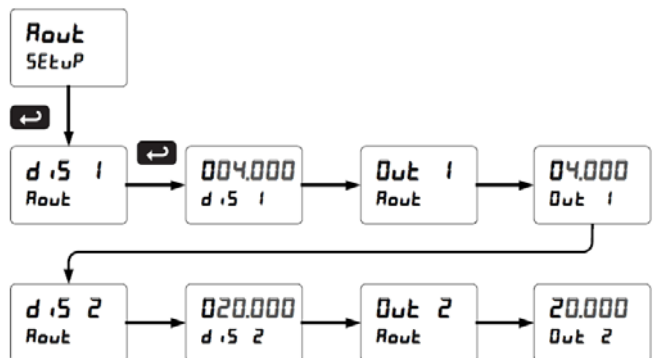
 **Right/F1 Button** – Use this button to change the selected digit while inputting a numeric value in *Programming Mode*.

 **Up/F2 Button** – Use this button to increment the selected digit while inputting a numeric value in *Programming Mode*.

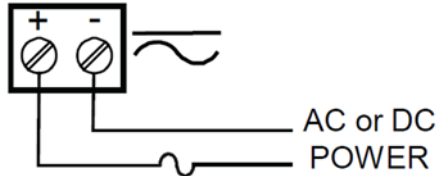
 **Enter/F3 Button** – Use this button to access or accept a menu item while in *Programming Mode*.

Front Panel Push Button Programming

The 4-20 mA analog output can be scaled to provide a 4-20 mA signal for any display range selected. No equipment is needed to scale the analog output; simply program the display values to the corresponding mA output signal. The Analog Output menu is used to program the 4-20 mA output based on display values.

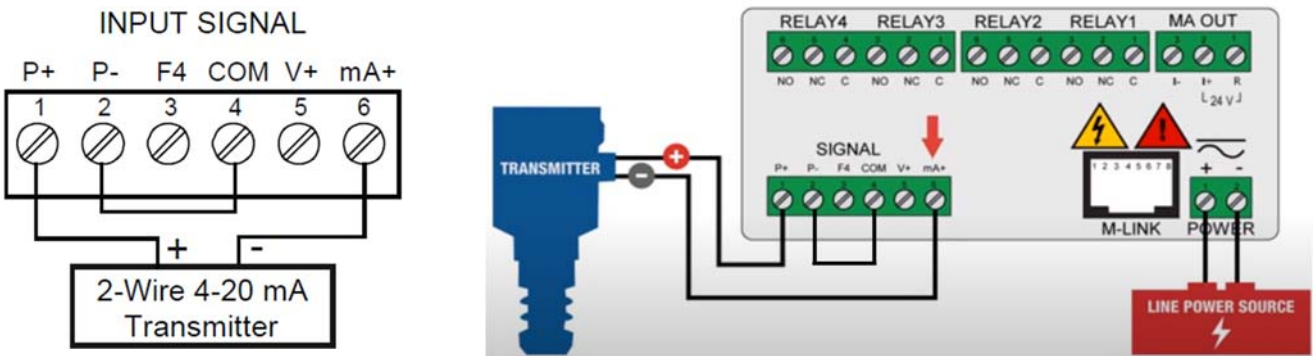


POWER



Required External Fuse:
5 A max, 250 V Slow Blow

Wiring for a 4-20 mA input using internal power supply.



Wiring for internal relays operation.

