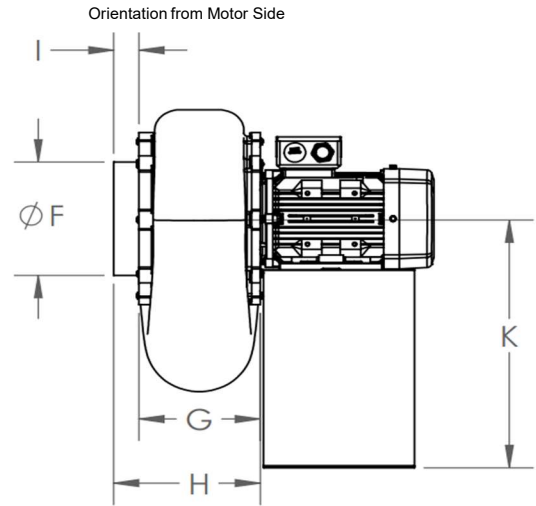
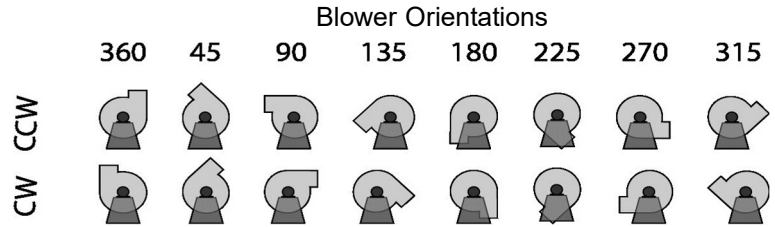
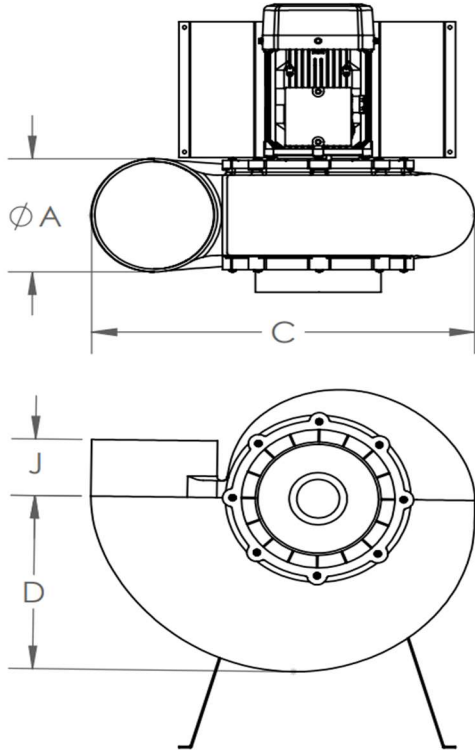




PLASTEC 15

Standard



Mechanical Data

	ØA (OD)	C	D	ØF (OD)	G	H	I	J
in	4.91	16.11	7.98	4.91	5.7	6.84	1.18	3.93
mm	125	410	203	125	144	174	30	100

Motor Height (K)

	0.25 Hp 0.33 Hp 0.50 Hp
in	12.20
mm	310

Project Name	
Date	
Engineer/Sales Rep	
Client	
Contractor	

Property rights to all drawings, details, representations, ideas, data, notes and specifications either copies or originals thereof that may be incorporated into the design and/or project are the property solely of Plastec ventilation, inc. Permission for any copies of said copyrighted materials, drawings, details, representations, ideas, data, notes and specifications either originals or copies thereof to be made, copied or altered by any person, business, or corporation may only be authorized with the expressed written permission of Plastec ventilation, inc. By the use of this data, the user acknowledges that he/she has read and understand all of the notes included herein.



PLASTEC 15

Standard

Model Numbers

Model Number	Max. Flow (cfm)	Min. Flow (cfm)	Max. Static (in. Wg)	Min. Static (in. Wg)	Phase	Power (hp)	RPM	Voltage (V)	FLA	Blower Weight (lbs)
P15SS6P025	200	40	0.28	0.1	Single Phase	0.25	1120	115/208-230	4.16/2.26-2.08	21.65
P15ST6P025*	200	40	0.28	0.1	Three Phase	0.25	1120	208-230/460	1.33-1.25/0.62	17.25
P15SS4P033	310	59	0.63	0.1	Single Phase	0.33	1720	115/208-230	3.49/1.88-1.74	17.69
P15ST4P033	310	59	0.63	0.1	Three Phase	0.33	1715	208-230/460	1.43-1.39/0.70	16.06
P15CT4P033*	310	59	0.63	0.1	Three Phase	0.33	1700	575	0.53	16.06
P15SS2P050	600	119	2.55	0.1	Single Phase	0.5	3370	115/208-230	4.50/2.59-2.25	17.25
P15ST2P050*	600	119	2.55	0.1	Three Phase	0.5	3470	208-230/460	1.68-1.57/0.78	16.676
P15CT2P050*	600	119	2.55	0.1	Three Phase	0.5	3380	575	0.68	16.676

*Available by special order; contact us for a quote.

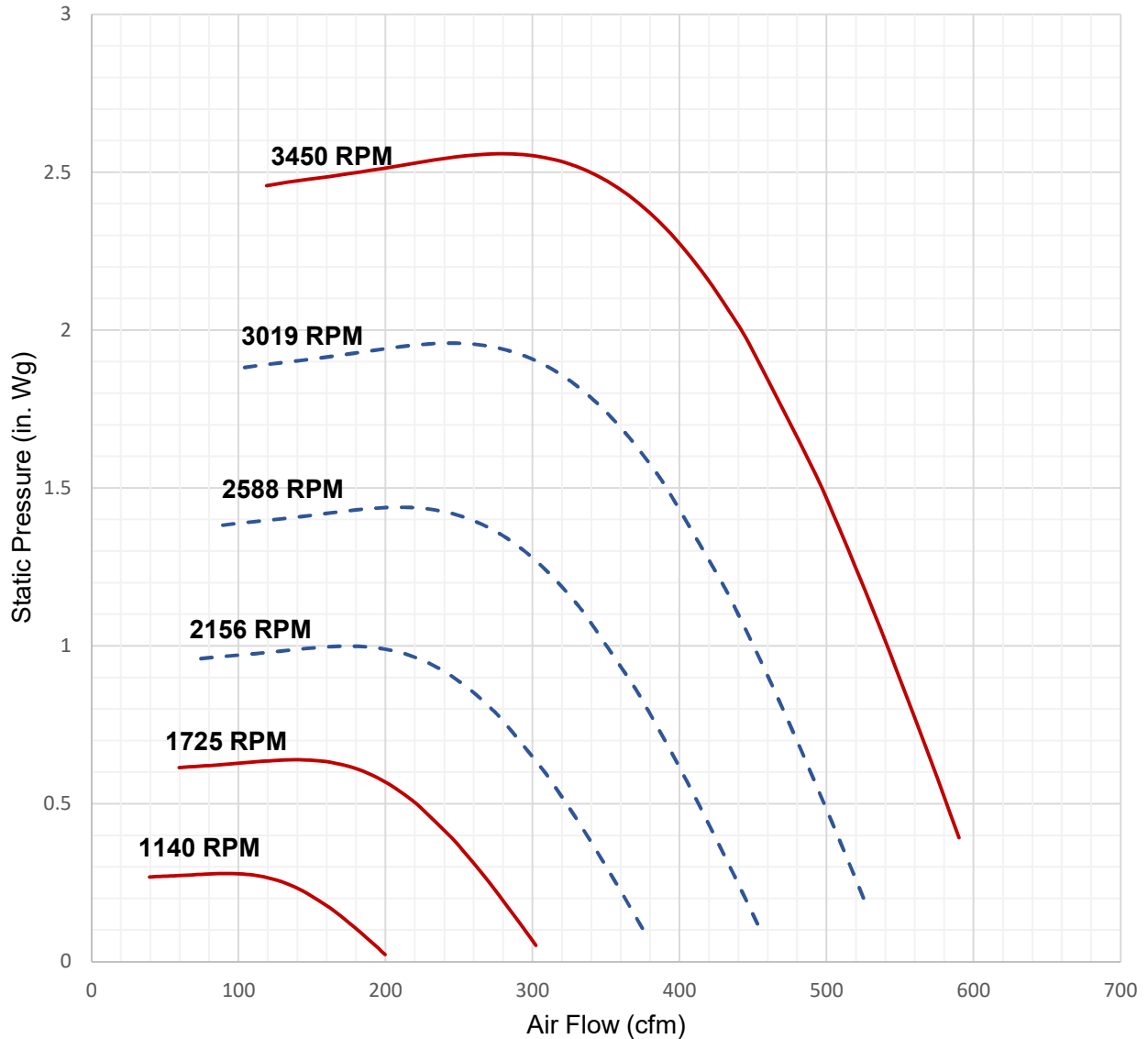
Property rights to all drawings, details, representations, ideas, data, notes and specifications either copies or originals thereof that may be incorporated into the design and/or project are the property solely of Plastec ventilation, inc. Permission for any copies of said copyrighted materials, drawings, details, representations, ideas, data, notes and specifications either originals or copies thereof to be made, copied or altered by any person, business, or corporation may only be authorized with the expressed written permission of Plastec ventilation, inc. By the use of this data, the user acknowledges that he/she has read and understand all of the notes included herein.



PLASTEC 15

Standard

Performance Curve



— Standard RPM - - - Frequency Variation

Property rights to all drawings, details, representations, ideas, data, notes and specifications either copies or originals thereof that may be incorporated into the design and/or project are the property solely of Plastec ventilation, inc. Permission for any copies of said copyrighted materials, drawings, details, representations, ideas, data, notes and specifications either originals or copies thereof to be made, copied or altered by any person, business, or corporation may only be authorized with the expressed written permission of Plastec ventilation, inc. By the use of this data, the user acknowledges that he/she has read and understand all of the notes included herein.



PLASTEC 15

Standard

Acoustic Data

		Qv	Ps	Octave Band (Hz)								Lw	Lw(A)	Lp(A)
		(cfm)	(inwg)	63	125	250	500	1000	2000	4000	8000	dB	dB(A)	dB(A)
3450 RPM	Inlet 1	343	2.40	70.1	59.0	67.2	68.8	67.3	61.4	55.7	47.3	84.6	78.5	76.5
	Inlet 2	343	2.40	63.3	70.5	76.3	78.3	68.3	60.7	57.1	48.3	87.5	81.8	79.7
	Inlet 3	549	0.74	66.6	77.0	83.3	82.9	73.3	64.5	61.8	54.9	93.4	87.4	85.4
	Inlet 4	137	2.43	68.0	58.3	64.6	66.8	65.3	60.2	53.8	45.3	82.4	76.8	74.7
	Outlet 1	137	2.43	62.0	66.2	72.0	71.3	65.0	59.5	54.6	44.6	83.7	77.7	75.6
	Outlet 2	479	1.54	73.6	63.2	72.6	73.3	69.5	62.8	58.0	50.4	88.1	81.5	79.5
	Outlet 3	549	0.74	74.2	61.6	73.3	75.0	71.1	64.3	60.1	54.1	89.0	82.8	80.8
	Outlet 4	479	1.54	64.8	75.2	82.2	82.7	71.9	62.6	59.8	51.9	92.2	86.4	84.4
1725 RPM	Inlet 1	171	0.60	48.2	55.4	61.2	63.2	53.2	45.6	42.0	33.2	72.4	66.7	64.7
	Inlet 2	171	0.60	55.0	43.9	52.1	53.7	52.2	46.3	40.6	32.2	69.5	63.5	61.4
	Inlet 3	68	0.61	47.0	51.2	57.0	56.3	50.0	44.5	39.6	29.6	68.6	62.7	60.6
	Inlet 4	239	0.38	49.8	60.2	67.2	67.7	56.9	47.6	44.8	36.9	77.1	71.4	69.3
	Outlet 1	239	0.38	58.6	48.2	57.6	58.3	54.5	47.8	43.0	35.4	73.0	66.5	64.4
	Outlet 2	275	0.18	59.2	46.6	58.3	60.0	56.1	49.3	45.1	39.1	73.9	67.8	65.7
	Outlet 3	275	0.18	51.6	62.0	68.3	67.9	58.3	49.5	46.8	39.9	78.3	72.4	70.3
	Outlet 4	68	0.61	53.0	43.3	49.6	51.8	50.3	45.2	38.8	30.3	67.4	61.7	59.7
1140 RPM	Inlet 1	113	0.26	39.2	46.4	52.2	54.2	44.2	36.6	33.0	24.2	63.4	57.7	55.7
	Inlet 2	158	0.17	40.8	51.2	58.2	58.7	47.9	38.6	35.8	27.9	68.2	62.4	60.4
	Inlet 3	45	0.26	44.0	34.3	40.6	42.8	41.3	36.2	29.8	21.3	58.4	52.7	50.7
	Inlet 4	158	0.17	49.6	39.2	48.6	49.3	45.5	38.8	34.0	26.4	64.0	57.5	55.4
	Outlet 1	182	0.08	42.6	53.0	59.3	58.9	49.3	40.5	37.8	30.9	69.3	63.4	61.3
	Outlet 2	182	0.08	50.2	37.6	49.3	51.0	47.1	40.3	36.1	30.1	64.9	58.8	56.7
	Outlet 3	45	0.26	38.0	42.2	48.0	47.3	41.0	35.5	30.6	20.6	59.6	53.7	51.6
	Outlet 4	113	0.26	46.0	34.9	43.1	44.7	43.2	37.3	31.6	23.2	60.5	54.5	52.4

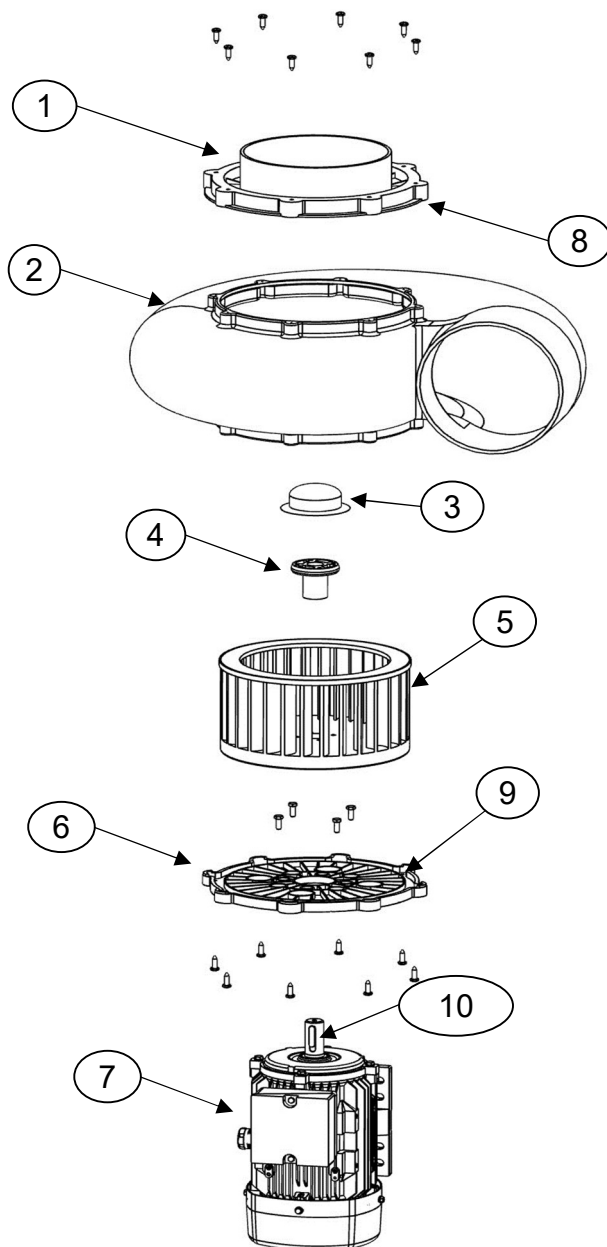
Property rights to all drawings, details, representations, ideas, data, notes and specifications either copies or originals thereof that may be incorporated into the design and/or project are the property solely of Plastec ventilation, inc. Permission for any copies of said copyrighted materials, drawings, details, representations, ideas, data, notes and specifications either originals or copies thereof to be made, copied or altered by any person, business, or corporation may only be authorized with the expressed written permission of Plastec ventilation, inc. By the use of this data, the user acknowledges that he/she has read and understand all of the notes included herein.



PLASTEC 15

Standard

Expanded View



1	Inlet Flange
2	Housing
3	Hub Cap
4	Hub
5	Impeller
6	Motor Plate
7	Motor
8	Inlet Gasket
9	Motor Plate Seal
10	Shaft Key

Property rights to all drawings, details, representations, ideas, data, notes and specifications either copies or originals thereof that may be incorporated into the design and/or project are the property solely of Plastec ventilation, inc. Permission for any copies of said copyrighted materials, drawings, details, representations, ideas, data, notes and specifications either originals or copies thereof to be made, copied or altered by any person, business, or corporation may only be authorized with the expressed written permission of Plastec ventilation, inc. By the use of this data, the user acknowledges that he/she has read and understand all of the notes included herein.