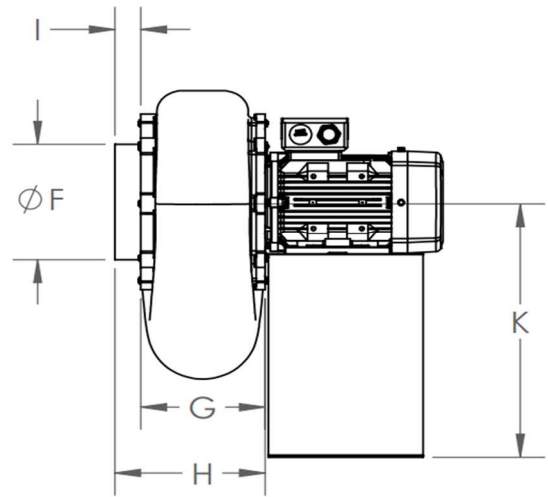
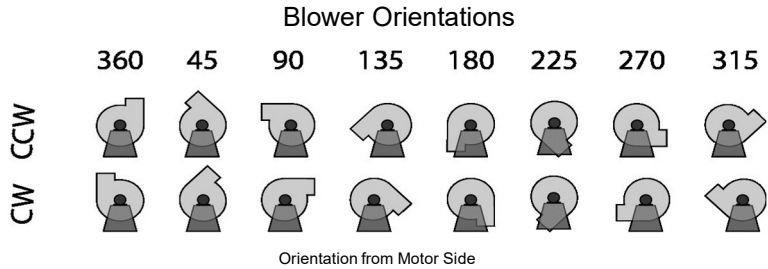
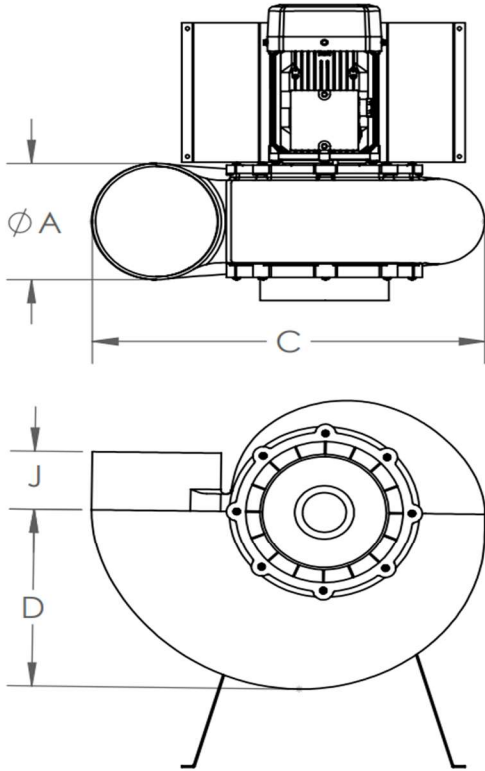




# PLASTEC 20

Standard



### Mechanical Data

	ØA (OD)	C	D	ØF (OD)	G	H	I	J
in	6.29	20.08	9.43	6.29	6.5	7.74	1.22	3.93
mm	160	511	240	160	166	197	31	100

### Motor Height (K)

	0.25 Hp	0.33 Hp	1 Hp   1.5 Hp
in	12.20	12.56	14.96
mm	310	319	380

<b>Project Name</b>	
<b>Date</b>	
<b>Engineer/Sales Rep</b>	
<b>Client</b>	
<b>Contractor</b>	

Property rights to all drawings, details, representations, ideas, data, notes and specifications either copies or originals thereof that may be incorporated into the design and/or project are the property solely of Plastec ventilation, inc. Permission for any copies of said copyrighted materials, drawings, details, representations, ideas, data, notes and specifications either originals or copies thereof to be made, copied or altered by any person, business, or corporation may only be authorized with the expressed written permission of Plastec ventilation, inc. By the use of this data, the user acknowledges that he/she has read and understand all of the notes included herein.



# PLASTEC 20

Standard

## Model Numbers

Model Number	Max. Flow (cfm)	Min. Flow (cfm)	Max. Static (in. Wg)	Min. Static (in. Wg)	Phase	Power (hp)	RPM	Voltage (V)	FLA	Blower Weight (lbs)
P20SS6P025	610	79	0.63	0.15	Single Phase	0.25	1120	115/208-230	4.16/2.26-2.08	23.34
P20ST6P025*	610	30~	0.63	0.15	Three Phase	0.25	1120	208-230/460	1.33-1.25/0.62	18.94
P20SS4P033	910	119	1.44	0.15	Single Phase	0.33	1720	115/208-230	3.49/1.88-1.74	19.38
P20ST4P033*	910	30~	1.44	0.15	Three Phase	0.33	1715	208-230/460	1.43-1.39/0.70	17.75
P20CT4P033*	910	30~	1.44	0.15	Three Phase	0.33	1700	575	0.53	17.75
P20SS2P100*	765	30~	5.8	0.15	Single Phase	1	3390	115/208-230	9.28/5.02-4.64	25.32
P20ST2P100	765	238	5.8	0.15	Three Phase	1	3480	208-230/460	3.05-3.06/1.53	26.202
P20SS2P150*	1200	30~	5.8	0.15	Single Phase	1.5	3435	115/208-230	12.50/7.24-6.24	30.822
P20ST2P150	1200	238	5.8	0.15	Three Phase	1.5	3510	208-230/460	4.44-4.26/2.13	29.942
P20CT2P150*	1200	30~	5.8	0.15	Three Phase	1.5	3510	575	1.64	29.942

\*Available by special order; contact us for a quote.

~Actual min. flow data may vary.

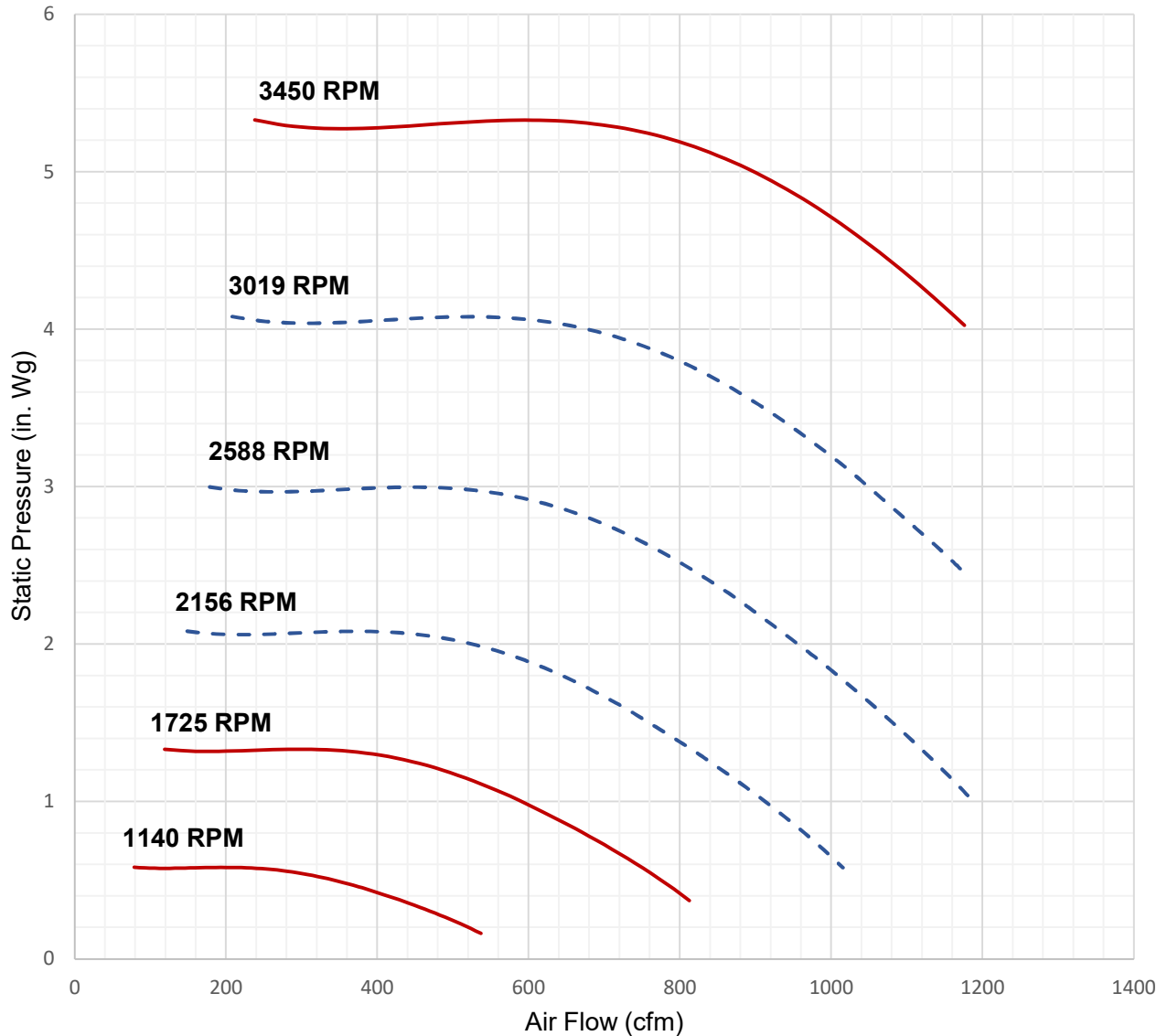
Property rights to all drawings, details, representations, ideas, data, notes and specifications either copies or originals thereof that may be incorporated into the design and/or project are the property solely of Plastec ventilation, inc. Permission for any copies of said copyrighted materials, drawings, details, representations, ideas, data, notes and specifications either originals or copies thereof to be made, copied or altered by any person, business, or corporation may only be authorized with the expressed written permission of Plastec ventilation, inc. By the use of this data, the user acknowledges that he/she has read and understand all of the notes included herein.



# PLASTEC 20

Standard

## Performance Curve



— Standard RPM      - - - Frequency Variation

Property rights to all drawings, details, representations, ideas, data, notes and specifications either copies or originals thereof that may be incorporated into the design and/or project are the property solely of Plastec ventilation, inc. Permission for any copies of said copyrighted materials, drawings, details, representations, ideas, data, notes and specifications either originals or copies thereof to be made, copied or altered by any person, business, or corporation may only be authorized with the expressed written permission of Plastec ventilation, inc. By the use of this data, the user acknowledges that he/she has read and understand all of the notes included herein.



# PLASTEC 20

Standard

## Acoustic Data

		Qv	Ps	Octave Band (Hz)								Lw	Lw(A)	Lp(A)
		(cfm)	(inwg)	63	125	250	500	1000	2000	4000	8000	dB	dB(A)	dB(A)
3450 RPM	Inlet 1	1061	4.26	91.1	65.5	82.3	82.1	77.5	70.0	67.8	60.2	95.9	89.3	87.2
	Inlet 2	1741	0.01	94.3	88.3	96.2	90.4	85.9	79.7	77.2	70.6	102.2	96.3	94.2
	Inlet 3	1061	4.26	89.8	81.1	89.3	85.0	77.5	71.8	70.1	62.4	96.1	89.7	87.6
	Inlet 4	1440	2.32	94.8	70.1	85.7	82.7	81.4	73.6	72.0	65.1	98.5	90.8	88.8
	Outlet 1	624	5.23	93.6	65.4	80.4	79.5	74.4	67.5	64.5	55.9	97.5	88.6	86.6
	Outlet 2	1741	0.01	97.2	75.1	88.6	85.2	86.8	77.6	76.0	69.4	101.0	94.1	92.0
	Outlet 3	1440	2.32	92.7	85.1	93.2	88.4	81.4	75.5	73.6	66.7	99.6	93.3	91.2
	Outlet 4	624	5.23	91.3	78.5	85.8	83.1	73.9	68.6	66.2	57.6	96.4	89.6	87.5
1725 RPM	Inlet 1	720	0.58	77.7	70.1	78.1	73.3	66.3	60.5	58.5	51.7	84.6	78.2	76.2
	Inlet 2	871	0.00	79.2	73.2	81.2	75.3	70.9	64.7	62.1	55.5	87.1	81.2	79.2
	Inlet 3	312	1.31	76.3	63.5	70.7	68.1	58.9	53.6	51.1	42.5	81.4	74.5	72.5
	Inlet 4	871	0.00	82.1	60.1	73.6	70.2	71.7	62.6	60.9	54.3	85.9	79.0	77.0
	Outlet 1	720	0.58	79.7	55.1	70.6	67.6	66.3	58.5	57.0	50.0	83.4	75.8	73.7
	Outlet 2	312	1.31	78.6	50.3	65.3	64.5	59.4	52.5	49.5	40.8	82.4	73.6	71.5
	Outlet 3	531	1.06	74.7	66.1	74.3	70.0	62.4	56.7	55.1	47.3	81.1	74.6	72.6
	Outlet 4	531	1.06	76.0	50.4	67.3	67.1	62.5	55.0	52.8	45.2	80.9	74.2	72.1
1140 RPM	Inlet 1	476	0.25	68.7	61.1	69.2	64.3	57.3	51.5	49.5	42.7	75.6	69.2	67.2
	Inlet 2	206	0.57	69.6	41.4	56.3	55.5	50.4	43.5	40.5	31.8	73.4	64.6	62.5
	Inlet 3	351	0.46	67.0	41.5	58.3	58.1	53.5	46.0	43.8	36.2	71.9	65.2	63.2
	Inlet 4	206	0.57	67.3	54.5	61.7	59.1	49.9	44.6	42.1	33.5	72.4	65.5	63.5
	Outlet 1	476	0.25	70.7	46.1	61.6	58.6	57.4	49.5	48.0	41.0	74.5	66.8	64.8
	Outlet 2	575	0.00	73.1	51.1	64.6	61.2	62.7	53.6	51.9	45.3	76.9	70.0	68.0
	Outlet 3	351	0.46	65.7	57.1	65.3	61.0	53.5	47.7	46.1	38.3	72.1	65.6	63.6
	Outlet 4	575	0.00	70.2	64.3	72.2	66.3	61.9	55.7	53.1	46.5	78.1	72.2	70.2

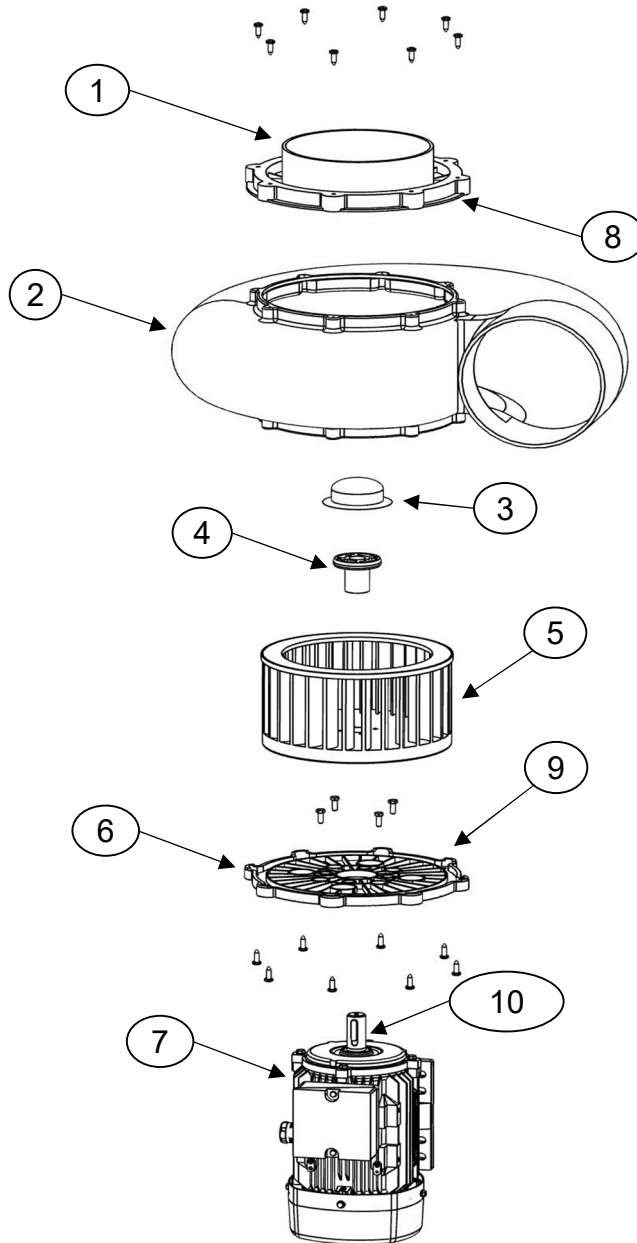
Property rights to all drawings, details, representations, ideas, data, notes and specifications either copies or originals thereof that may be incorporated into the design and/or project are the property solely of Plastec ventilation, inc. Permission for any copies of said copyrighted materials, drawings, details, representations, ideas, data, notes and specifications either originals or copies thereof to be made, copied or altered by any person, business, or corporation may only be authorized with the expressed written permission of Plastec ventilation, inc. By the use of this data, the user acknowledges that he/she has read and understand all of the notes included herein.



# PLASTEC 20

Standard

## Expanded View



1	Inlet Flange
2	Housing
3	Hub Cap
4	Hub
5	Impeller
6	Motor Plate
7	Motor
8	Inlet Gasket
9	Motor Plate Seal
10	Shaft Key

Property rights to all drawings, details, representations, ideas, data, notes and specifications either copies or originals thereof that may be incorporated into the design and/or project are the property solely of Plastec ventilation, inc. Permission for any copies of said copyrighted materials, drawings, details, representations, ideas, data, notes and specifications either originals or copies thereof to be made, copied or altered by any person, business, or corporation may only be authorized with the expressed written permission of Plastec ventilation, inc. By the use of this data, the user acknowledges that he/she has read and understand all of the notes included herein.