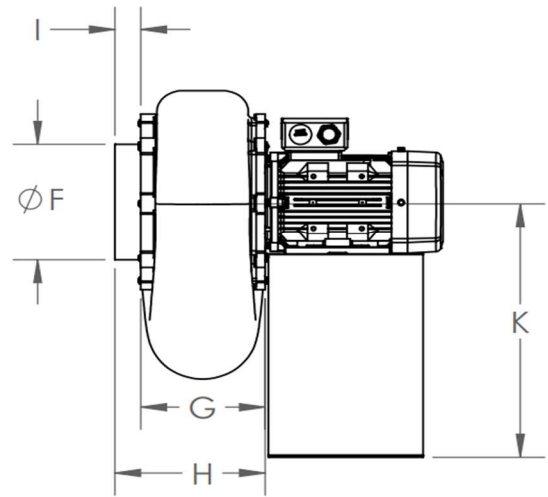
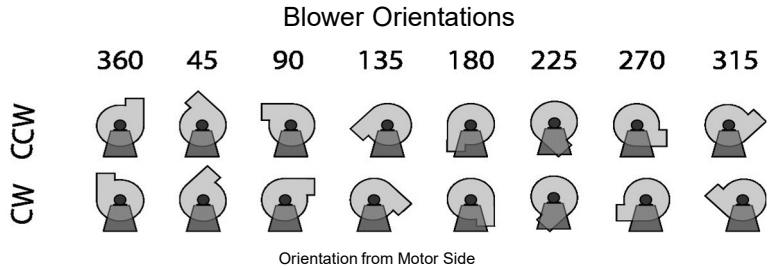
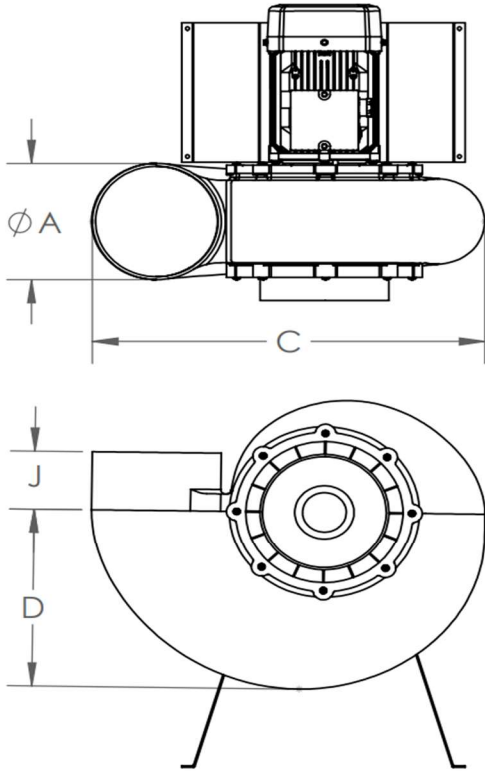




PLASTEC 25

Standard



Mechanical Data

	ØA (OD)	C	D	ØF (OD)	G	H	I	J
in	7.86	23.99	12.03	7.86	7.6	9.16	1.57	3.93
mm	200	610.5	306	200	193	233	40	100

Motor Height (K)

	0.25 Hp 0.50 Hp	0.75 Hp	3 Hp 4 Hp
in	14.61	14.96	17.28
mm	371	380	439

Project Name	
Date	
Engineer/Sales Rep	
Client	
Contractor	

Property rights to all drawings, details, representations, ideas, data, notes and specifications either copies or originals thereof that may be incorporated into the design and/or project are the property solely of Plastec ventilation, inc. Permission for any copies of said copyrighted materials, drawings, details, representations, ideas, data, notes and specifications either originals or copies thereof to be made, copied or altered by any person, business, or corporation may only be authorized with the expressed written permission of Plastec ventilation, inc. By the use of this data, the user acknowledges that he/she has read and understand all of the notes included herein.



PLASTEC 25

Standard

Model Numbers

Property rights to all drawings, details, representations, ideas, data, notes and specifications either copies or originals thereof that may be incorporated into the design and/or project are the property solely of Plastec ventilation, inc. Permission for any copies of said copyrighted materials, drawings, details, representations, ideas, data, notes and specifications either originals or copies thereof to be made, copied or altered by any person, business, or corporation may only be authorized with the expressed written permission of Plastec ventilation, inc. By the use of this data, the user acknowledges that he/she has read and understand all of the notes included herein.

Model Number	Max. Flow (cfm)	Min. Flow (cfm)	Max. Static (in. Wg)	Min. Static (in. Wg)	Phase	Power (hp)	RPM	Voltage (V)	FLA	Blower Weight (lbs)
P25SS6P025*	1120	100~	0.88	0.25	Single Phase	0.25	1120	115/208-230	4.16/2.26-2.08	27.48
P25ST6P025*	1120	100~	0.88	0.25	Three Phase	0.25	1120	208-230/460	1.33-1.25/0.62	23.08
P25SS4P050*	1700	100~	2	0.25	Single Phase	0.5	1710	115/208-230	5.26/2.73-2.63	25.94
P25ST4P050*	1700	100~	2	0.25	Three Phase	0.5	1705	208-230/460	1.90-1.78/0.89	23.87
P25CT4P050*	1700	100~	2	0.25	Three Phase	0.5	1700	575	0.73	23.87
P25SS4P075	1700	178	2	0.25	Single Phase	0.75	1670	115/208-230	7.11/4.23-3.56	28.91
P25ST4P075	1700	178	2	0.25	Three Phase	0.75	1730	208-230/460	2.68-2.53/1.26	28.908
P25CT4P075*	1700	100~	2	0.25	Three Phase	0.75	1690	575	0.96	28.908
P25ST2P300*	2100	100~	8	0.25	Three Phase	3	3490	208-230/460	7.86-7.26/3.63	44.638
P25CT2P300*	2100	100~	8	0.25	Three Phase	3	3490	575	2.94	44.638
P25ST2P400*	2100	100~	8	0.25	Three Phase	4	3500	208-230/460	10.7-9.89/4.95	49.478
P25CT2P400*	2100	100~	8	0.25	Three Phase	4	3490	575	3.96	49.478

*Available by special order; contact us for a quote.

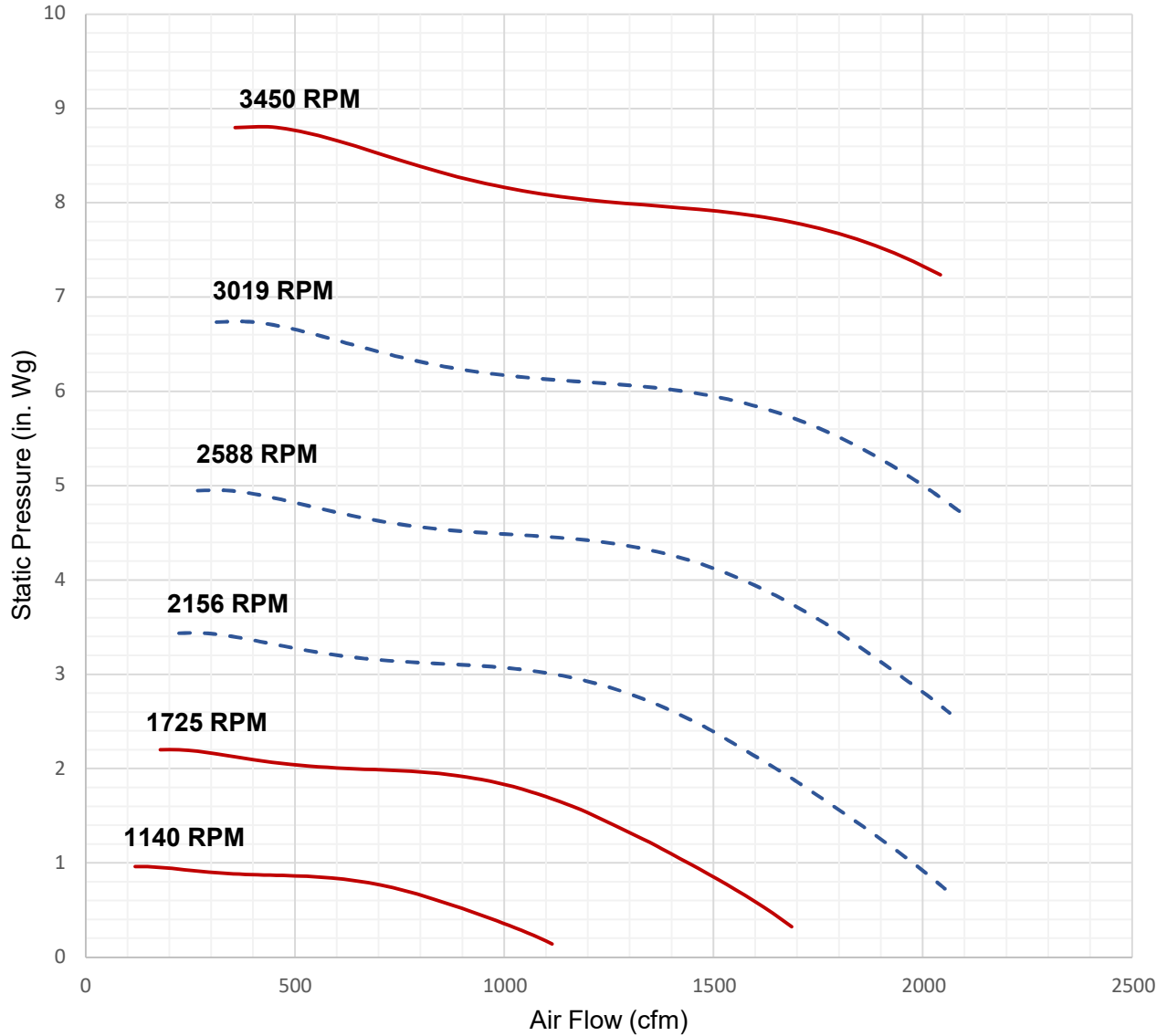
~Actual min. flow data may vary.



PLASTEC 25

Standard

Performance Curve



— Standard RPM - - - Frequency Variation

Property rights to all drawings, details, representations, ideas, data, notes and specifications either copies or originals thereof that may be incorporated into the design and/or project are the property solely of Plastec ventilation, inc. Permission for any copies of said copyrighted materials, drawings, details, representations, ideas, data, notes and specifications either originals or copies thereof to be made, copied or altered by any person, business, or corporation may only be authorized with the expressed written permission of Plastec ventilation, inc. By the use of this data, the user acknowledges that he/she has read and understand all of the notes included herein.



PLASTEC 25

Standard

Acoustic Data

		Qv	Ps	Octave Band (Hz)								Lw	Lw(A)	Lp(A)
		(cfm)	(inwg)	63	125	250	500	1000	2000	4000	8000	dB	dB(A)	dB(A)
3450 RPM	Inlet 1	1858	7.31	103.2	92.0	87.0	89.8	83.2	78.2	76.6	68.9	105.3	95.0	92.9
	Inlet 2	3076	2.45	95.1	89.1	86.4	88.8	85.6	78.0	76.1	70.9	102.0	95.6	93.6
	Inlet 3	919	8.09	101.2	91.8	85.0	88.1	82.0	77.6	74.1	67.0	103.4	93.4	91.4
	Inlet 4	1858	7.31	97.3	84.4	82.7	85.1	81.4	75.1	72.6	66.6	101.1	91.8	89.7
	Outlet 1	3458	0.00	101.1	98.2	95.8	94.1	90.6	83.0	81.2	74.4	108.5	101.4	99.3
	Outlet 2	3458	0.00	96.2	90.6	87.4	90.3	87.4	80.1	78.2	72.8	103.2	97.0	94.9
	Outlet 3	919	8.09	95.4	85.3	83.6	83.2	80.6	74.4	70.7	65.2	99.7	91.2	89.2
	Outlet 4	3076	2.45	100.2	96.5	94.1	92.5	88.6	81.0	79.4	72.6	107.2	99.9	97.9
1725 RPM	Inlet 1	460	2.02	80.3	70.3	68.6	68.1	65.6	59.3	55.7	50.2	84.6	76.2	74.1
	Inlet 2	1538	0.61	80.0	74.1	71.4	73.8	70.6	63.0	61.1	55.8	87.0	80.6	78.5
	Inlet 3	1729	0.00	81.1	75.5	72.3	75.3	72.4	65.1	63.1	57.8	88.1	81.9	79.9
	Inlet 4	929	1.83	82.2	69.3	67.6	70.1	66.3	60.1	57.6	51.6	86.0	76.7	74.6
	Outlet 1	1729	0.00	86.1	83.2	80.8	79.0	75.6	67.9	66.1	59.3	93.4	86.3	84.3
	Outlet 2	1538	0.61	85.2	81.4	79.1	77.5	73.6	65.9	64.3	57.5	92.1	84.9	82.8
	Outlet 3	460	2.02	86.2	76.7	69.9	73.1	67.0	62.6	59.1	52.0	88.4	78.4	76.3
	Outlet 4	929	1.83	88.1	76.9	71.9	74.8	68.1	63.2	61.5	53.8	90.3	79.9	77.9
1140 RPM	Inlet 1	1143	0.00	77.1	74.2	71.8	70.0	66.6	58.9	57.2	50.3	84.4	77.3	75.3
	Inlet 2	1016	0.27	76.2	72.4	70.1	68.5	64.6	56.9	55.3	48.6	83.1	75.9	73.8
	Inlet 3	304	0.88	77.2	67.7	60.9	64.1	58.0	53.6	50.1	43.0	79.4	69.4	67.3
	Inlet 4	614	0.80	79.1	67.9	62.9	65.8	59.1	54.2	52.5	44.8	81.3	70.9	68.9
	Outlet 1	614	0.80	73.3	60.3	58.6	61.1	57.3	51.1	48.6	42.6	77.0	67.7	65.7
	Outlet 2	1016	0.27	71.0	65.1	62.4	64.8	61.6	54.0	52.1	46.8	78.0	71.6	69.5
	Outlet 3	1143	0.00	72.1	66.6	63.3	66.3	63.4	56.1	54.1	48.8	79.1	73.0	70.9
	Outlet 4	304	0.88	71.3	61.3	59.6	59.1	56.6	50.3	46.7	41.2	75.6	67.2	65.1

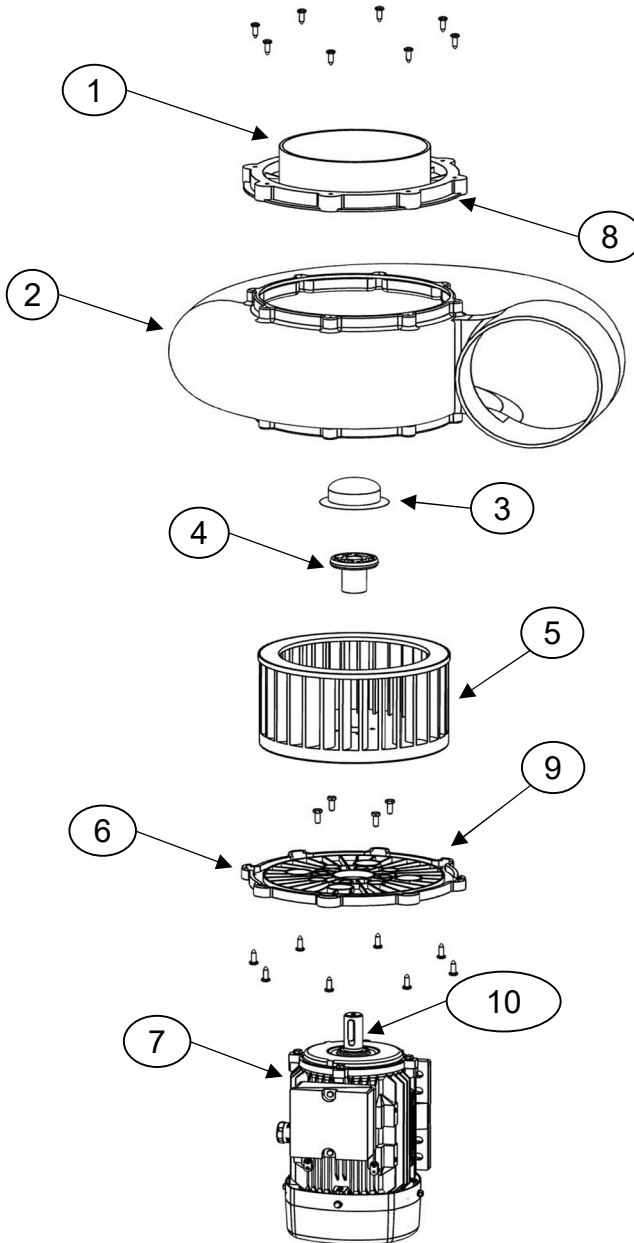
Property rights to all drawings, details, representations, ideas, data, notes and specifications either copies or originals thereof that may be incorporated into the design and/or project are the property solely of Plastec ventilation, inc. Permission for any copies of said copyrighted materials, drawings, details, representations, ideas, data, notes and specifications either originals or copies thereof to be made, copied or altered by any person, business, or corporation may only be authorized with the expressed written permission of Plastec ventilation, inc. By the use of this data, the user acknowledges that he/she has read and understand all of the notes included herein.



PLASTEC 25

Standard

Expanded View



1	Inlet Flange
2	Housing
3	Hub Cap
4	Hub
5	Impeller
6	Motor Plate
7	Motor
8	Inlet Gasket
9	Motor Plate Seal
10	Shaft Key

Property rights to all drawings, details, representations, ideas, data, notes and specifications either copies or originals thereof that may be incorporated into the design and/or project are the property solely of Plastec ventilation, inc. Permission for any copies of said copyrighted materials, drawings, details, representations, ideas, data, notes and specifications either originals or copies thereof to be made, copied or altered by any person, business, or corporation may only be authorized with the expressed written permission of Plastec ventilation, inc. By the use of this data, the user acknowledges that he/she has read and understand all of the notes included herein.