

## Silver-Series Cloth Insulators

Silver-Series Insulators are a configurable system of cloth insulators that feature durable high-temperature cloth, 1"-thick needle-punched fiberglass insulation, and hook & loop closures for easy installation and removal. This cost-effective solution improves thermal efficiency for hot and cold pipes, tanks, and vessels in industrial and commercial environments. Custom designs can be manufactured for unique requirements.

### Product Highlights

- ✓ Configurable system
- ✓ Easy-to-install
- ✓ Removable and reusable
- ✓ Durable and long service life
- ✓ Economical solution
- ✓ Cut-to-length pipe insulators
- ✓ Moisture and chemical resistant cloth
- ✓ High-temperature
- ✓ Fire-retardant
- ✓ Asbestos-free



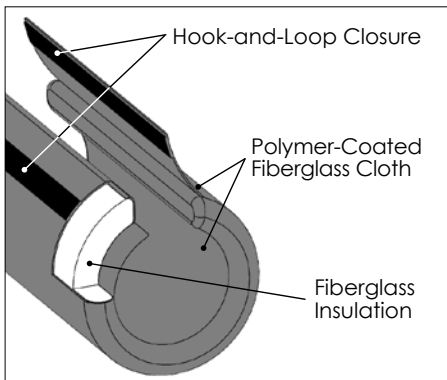
### Specifications:

- Operating Temperature: Up to 450°F (232°C)
- Cloth: FRC1650 polymer-coated fiberglass
- Insulation: 1" (25mm) needle-punch fiberglass
- Thermal Performance: R3.3, K0.21@75°F (24°C)
- Ingress Protection Rating: IP54

### Uses and Applications:

- Self-Regulating Heating Cable
- Constant-Watt Heating Cable
- Heating Tapes
- General Purpose Insulation

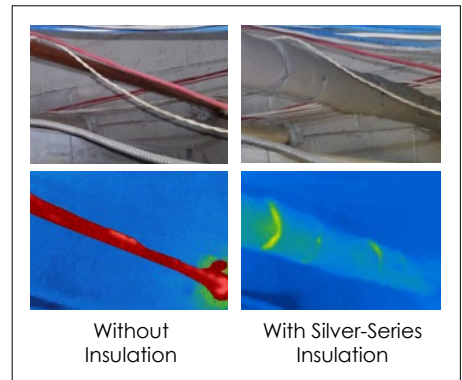
#### 1 Quality Construction



#### 2 Cut-to-Length Versatility



#### 3 Improved Thermal Efficiency



## Silver-Series Cloth Insulators

### Ordering Information



Part No.	Description	Pipe/Tube OD
SSIVB102	2-Way 1" Ball Valve	1/2" - 1"
SSIVB152	2-Way 1.5" Ball Valve	1" - 1.5"
SSIVB202	2-Way 2" Ball Valve	1.5" - 2"
SSIVB302	2-Way 3" Ball Valve	2" - 3"
SSIVB402	2-Way 4" Ball Valve	3" - 4"
SSIVC102	2-Way 1" Control Valve	1/2" - 1"
SSIVC152	2-Way 1.5" Control Valve	1" - 1.5"
SSIVC202	2-Way 2" Control Valve	1.5" - 2"
SSIVC302	2-Way 3" Control Valve	2" - 3"
SSIVC402	2-Way 4" Control Valve	3" - 4"
SSIVG152	2-Way 1.5" Gate Valve	1" - 1.5"
SSIVG202	2-Way 2" Gate Valve	1.5" - 2"
SSIVG302	2-Way 3" Gate Valve	2" - 3"
SSIVG402	2-Way 4" Gate Valve	3" - 4"
SSIVB103	3-Way 1" Ball Valve	1/2" - 1"
SSIVB153	3-Way 1.5" Ball Valve	1" - 1.5"
SSIVB203	3-Way 2" Ball Valve	1.5" - 2"
SSIVB303	3-Way 3" Ball Valve	2" - 3"
SSIVB403	3-Way 4" Ball Valve	3" - 4"
SSIVC103	3-Way 1" Control Valve	1/2" - 1"
SSIVC153	3-Way 1.5" Control Valve	1" - 1.5"
SSIVC203	3-Way 2" Control Valve	1.5" - 2"
SSIVC303	3-Way 3" Control Valve	2" - 3"
SSIVC403	3-Way 4" Control Valve	3" - 4"
SSIVG153	3-Way 1.5" Gate Valve	1" - 1.5"
SSIVG203	3-Way 2" Gate Valve	1.5" - 2"
SSIVG303	3-Way 3" Gate Valve	2" - 3"
SSIVG403	3-Way 4" Gate Valve	3" - 4"



Part No.	Description	Pipe/Tube OD
SSIP10	1" Straight Pipe	1/2" - 1"
SSIP15	1.5" Straight Pipe	1" - 1.5"
SSIP20	2" Straight Pipe	1.5" - 2"
SSIP30	3" Straight Pipe	2" - 3"
SSIP40	4" Straight Pipe	3" - 4"

Qty 1 - Accommodates up to 83" of finished length.



Part No.	Description	Pipe/Tube OD
SSIF10	1" Flange (Max Dia. 4-7/8")	1/2" - 1"
SSIF15	1.5" Flange (Max Dia. 6-1/8")	1" - 1.5"
SSIF20	2" Flange (Max Dia. 6-1/2")	1.5" - 2"
SSIF25	2.5" Flange (Max Dia. 7-1/2")	2" - 2.5"
SSIF30	3" Flange (Max Dia. 8-1/4")	2.5" - 3"
SSIF40	4" Flange (Max Dia. 10-3/4")	3" - 4"



Part No.	Description	Pipe/Tube OD
SSIC10	1" Seam Cover	1/2" - 1"
SSIC20	2" Seam Cover	1.5" - 2"
SSIC30	3" Seam Cover	2" - 3"
SSIC40	4" Seam Cover	3" - 4"



Part No.	Description	Pipe/Tube OD
SSIT10	1" Tee	1/2" - 1"
SSIT20	2" Tee	1.5" - 2"
SSIT30	3" Tee	2" - 3"
SSIT40	4" Tee	3" - 4"



Part No.	Description	Pipe/Tube OD
SSI9010	1" 90° Elbow	1/2" - 1"
SSI9020	2" 90° Elbow	1.5" - 2"
SSI9030	3" 90° Elbow	2" - 3"
SSI9040	4" 90° Elbow	3" - 4"

## Custom Design Options for Pipes, Tanks, and Vessels

#### Cloth Materials/Max Exposure Temperature

- Polymer-Coated Fiberglass 450°F (232°C)
- High-Temperature Silicone-Coated Fiberglass 625°F (329°C)
- High-Temperature Non-Coated Fiberglass 1000°F (538°C)
- Extreme Temperature Silica Fabric 1800°F (982°C)

#### Closure Types

- Hook and Loop
- D-Rings
- Draw Strings
- Built-in Magnets

#### Insulation Thickness

- 1"                      • 3"
- 1.5"                  • 3.5"
- 2"
- 2.5"

Note: Color options available upon request

**Custom Sizes and Designs Available:** Contact your local distributor or BriskHeat® for more information.