

Tamco® Polypropylene Square & Rectangular Tanks

For over 40 years, Tamco Industries® has served as the manufacturing division of United States Plastic Corporation®. Most known for manufacturing rotationally molded tanks, Tamco has expanded its line of products to include fabricated tanks and hoods, injection molded fittings and spigots and extruded tubing. With the ability to customize products, Tamco is dedicated to meeting each customer's individual needs.

Along with efforts to develop new and innovative products for the market, Tamco Industries® continues to provide customers with the quality goods and services they have come to expect from the Tamco® brand.

Tamco® Industries is a division of United States Plastic Corp.®



1390 Neubrecht Road
Lima, OH 45801-3196

Ph: 800-537-9724
Fax: 800-854-5498

www.tamcoindustries.com



DESCRIPTION

These heavy duty rectangular tanks are self-supporting and offer good corrosion resistance to many chemicals even at elevated temperatures.

- Welded from polypropylene sheets
- Translucent for viewing level of liquid
- Not UV resistant
- All tanks have a top flange
- Taller tanks will have additional support bands
- Superior strength over molded tanks
- Maximum temperature: 200°F
- Materials meet FDA standards

Note: Not recommended for use with chromic or nitric acids Do not use these tanks for wetting agents, fuels or oils. Tanks are not designed for pressure applications.

APPLICATIONS

- Dip Tanks
- Plating Tanks
- Anodizing Tanks
- Batch Tanks
- Chemical Supply Tanks
- Balance Tanks

Note: For help selecting a tank or tank accessories for your specific application please contact our technical support department at 800-537-9724 or email them at techsupport@usplastic.com.

Tamco® Polypropylene Square & Rectangular Tanks



www.tamcoindustries.com

SPECIFICATION CHART

Tank Part #	Item Description (L x W x H Inside Dimensions)	Approximate Weight	Support Bands	Wall Thickness	Cover Part #
9185	2 Gallon Polypropylene Tank - 8" x 8" x 8"	4.3 lbs.	0	3/16"	9189
9186	1 Gallon Polypropylene Tank - 12" x 6" x 6"	4 lbs.	0	3/16"	9190
9187	3 Gallon Polypropylene Tank - 12" x 6" x 12"	5.8 lbs.	0	3/16"	9190
9188	5 Gallon Polypropylene Tank - 12" x 6" x 18"	9.4 lbs.	0	3/16"	9190
9007	7 Gallon Polypropylene Tank - 12" x 12" x 12"	9.1 lbs.	0	3/16"	9125
9008	11 Gallon Polypropylene Tank - 12" x 12" x 18"	11.4 lbs.	0	1/4"	9125
9009	14 Gallon Polypropylene Tank - 12" x 12" x 24"	14 lbs.	0	1/4"	9125
9079	18 Gallon Polypropylene Tank - 12" x 12" x 30"	15 lbs.	0	1/4"	9125
9161	9 Gallon Polypropylene Tank - 15" x 12" x 12"	12 lbs.	0	1/4"	9191
9162	7 Gallon Polypropylene Tank - 18" x 8" x 12"	10.2 lbs.	0	1/4"	9192
9164	14 Gallon Polypropylene Tank - 18" x 8" x 24"	17 lbs.	0	1/4"	9192
9010	11 Gallon Polypropylene Tank - 18" x 12" x 12"	15 lbs.	0	1/4"	9126
9011	16 Gallon Polypropylene Tank - 18" x 12" x 18"	34 lbs.	0	1/4"	9126
9012	22 Gallon Polypropylene Tank - 18" x 12" x 24"	35 lbs.	0	1/4"	9126
9080	28 Gallon Polypropylene Tank - 18" x 12" x 30"	41 lbs.	0	1/4"	9126
9082	16 Gallon Polypropylene Tank - 18" x 18" x 12"	30.6 lbs.	0	1/4"	9128
9013	25 Gallon Polypropylene Tank - 18" x 18" x 18"	36 lbs.	0	1/4"	9128
9083	33 Gallon Polypropylene Tank - 18" x 18" x 24"	41 lbs.	0	1/4"	9128
9084	42 Gallon Polypropylene Tank - 18" x 18" x 30"	46 lbs.	0	1/4"	9128
9085	50 Gallon Polypropylene Tank - 18" x 18" x 36"	60 lbs.	2	1/4"	9128
9165	11 Gallon Polypropylene Tank - 24" x 6" x 18"	14.6 lbs.	0	1/4"	9193
9014	14 Gallon Polypropylene Tank - 24" x 12" x 12"	30 lbs.	0	1/4"	9127
9015	22 Gallon Polypropylene Tank - 24" x 12" x 18"	36.4 lbs.	0	1/4"	9127
9016	29 Gallon Polypropylene Tank - 24" x 12" x 24"	41 lbs.	0	1/4"	9127
9081	37 Gallon Polypropylene Tank - 24" x 12" x 30"	48 lbs.	0	1/4"	9127
9086	22 Gallon Polypropylene Tank - 24" x 18" x 12"	38.2 lbs.	0	1/4"	9129
9017	33 Gallon Polypropylene Tank - 24" x 18" x 18"	44 lbs.	0	1/4"	9129
9018	44 Gallon Polypropylene Tank - 24" x 18" x 24"	51 lbs.	0	1/4"	9129
9019	56 Gallon Polypropylene Tank - 24" x 18" x 30"	59 lbs.	0	1/4"	9129
9087	67 Gallon Polypropylene Tank - 24" x 18" x 36"	69 lbs.	2	1/4"	9129
9020	29 Gallon Polypropylene Tank - 24" x 24" x 12"	48 lbs.	0	1/4"	9130
9021	44 Gallon Polypropylene Tank - 24" x 24" x 18"	63 lbs.	0	1/4"	9130
9022	59 Gallon Polypropylene Tank - 24" x 24" x 24"	64 lbs.	0	1/4"	9130
9088	74 Gallon Polypropylene Tank - 24" x 24" x 30"	74 lbs.	2	1/4"	9130
9089	89 Gallon Polypropylene Tank - 24" x 24" x 36"	74 lbs.	2	1/4"	9130

Note: For help selecting a tank or tank accessories for your specific application please contact our technical support department at 800-537-9724 or email them at techsupport@usplastic.com.

Tamco® Polypropylene Square & Rectangular Tanks

SPECIFICATION CHART

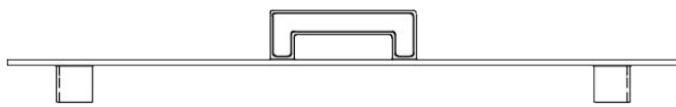
Tank Part #	Item Description (L x W x H Inside Dimensions)	Approximate Weight	Support Bands	Wall Thickness	Cover Part #
9166	18 Gallon Polypropylene Tank - 30" x 12" x 12"	39 lbs.	0	1/4"	9194
9167	28 Gallon Polypropylene Tank - 30" x 12" x 18"	45.6 lbs.	0	1/4"	9194
9168	37 Gallon Polypropylene Tank - 30" x 12" x 24"	50.8 lbs.	0	1/4"	9194
9169	28 Gallon Polypropylene Tank - 30" x 18" x 12"	42 lbs.	0	1/4"	9132
9023	42 Gallon Polypropylene Tank - 30" x 18" x 18"	50 lbs.	0	1/4"	9132
9171	56 Gallon Polypropylene Tank - 30" x 18" x 24"	60 lbs.	0	1/4"	9132
9172	70 Gallon Polypropylene Tank - 30" x 18" x 30"	63 lbs.	2	1/4"	9132
9024	37 Gallon Polypropylene Tank - 30" x 24" x 12"	65 lbs.	0	1/4"	9131
9025	56 Gallon Polypropylene Tank - 30" x 24" x 18"	62 lbs.	0	1/4"	9131
9026	74 Gallon Polypropylene Tank - 30" x 24" x 24"	73 lbs.	1	1/4"	9131
9094	93 Gallon Polypropylene Tank - 30" x 24" x 30"	88 lbs.	2	1/4"	9131
9095	112 Gallon Polypropylene Tank - 30" x 24" x 36"	94 lbs.	2	1/4"	9131
9096	149 Gallon Polypropylene Tank - 30" x 24" x 48"	120 lbs.	3	1/4"	9131
9302	46 Gallon Polypropylene Tank - 30" x 30" x 12"	64 lbs.	0	1/4"	9332
9303	70 Gallon Polypropylene Tank - 30" x 30" x 18"	84 lbs.	1	1/4"	9332
9304	93 Gallon Polypropylene Tank - 30" x 30" x 24"	84.5 lbs.	1	1/4"	9332
9305	116 Gallon Polypropylene Tank - 30" x 30" x 30"	96 lbs.	2	1/4"	9332
9306	140 Gallon Polypropylene Tank - 30" x 30" x 36"	104 lbs.	2	1/4"	9332
9173	22 Gallon Polypropylene Tank - 36" x 12" x 12"	21 lbs.	0	1/4"	9196
9174	33 Gallon Polypropylene Tank - 36" x 12" x 18"	51.4 lbs.	0	1/4"	9196
9175	44 Gallon Polypropylene Tank - 36" x 12" x 24"	65 lbs.	1	1/4"	9196
9176	33 Gallon Polypropylene Tank - 36" x 18" x 12"	60 lbs.	0	1/4"	9197
9177	50 Gallon Polypropylene Tank - 36" x 18" x 18"	71 lbs.	0	1/4"	9197
9178	67 Gallon Polypropylene Tank - 36" x 18" x 24"	75 lbs.	1	1/4"	9197
9090	62 Gallon Polypropylene Tank - 36" x 20" x 20"	66 lbs.	0	1/4"	9133
9091	44 Gallon Polypropylene Tank - 36" x 24" x 12"	62 lbs.	0	1/4"	9134
9092	67 Gallon Polypropylene Tank - 36" x 24" x 18"	68 lbs.	0	1/4"	9134
9093	89 Gallon Polypropylene Tank - 36" x 24" x 24"	82 lbs.	2	1/4"	9134
9301	134 Gallon Polypropylene Tank - 36" x 24" x 36"	104 lbs.	2	1/4"	9134
9179	56 Gallon Polypropylene Tank - 36" x 30" x 12"	45 lbs.	0	1/4"	9198
9180	84 Gallon Polypropylene Tank - 36" x 30" x 18"	72 lbs.	1	1/4"	9198
9181	112 Gallon Polypropylene Tank - 36" x 30" x 24"	101 lbs.	1	1/4"	9198
9182	67 Gallon Polypropylene Tank - 36" x 36" x 12"	88 lbs.	0	1/4"	9199
9183	100 Gallon Polypropylene Tank - 36" x 36" x 18"	82 lbs.	1	1/4"	9199
9184	134 Gallon Polypropylene Tank - 36" x 36" x 24"	110 lbs.	2	1/4"	9199

Note: For help selecting a tank or tank accessories for your specific application please contact our technical support department at 800-537-9724 or email them at techsupport@usplastic.com.

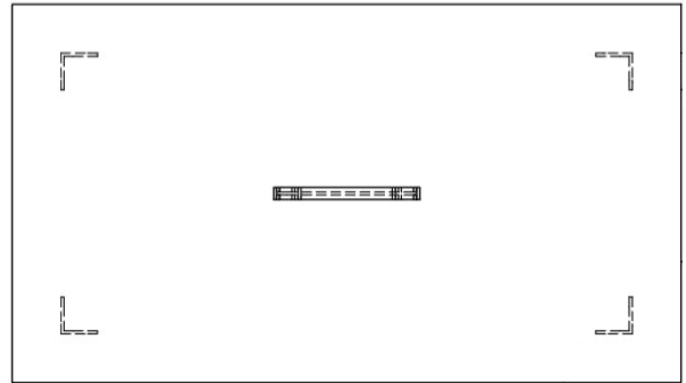
Tamco® Polypropylene Square & Rectangular Tanks

COVER SPECIFICATIONS

- Welded from polypropylene sheets
- L's on bottom of lid keep lid in place on tank
- Convenient handle allows for easy removal
- Not UV resistant
- Maximum temperature: 200°F
- Materials meet FDA standards



Side View



Top View

Cover Part #	Item Description	Overall Length	Overall Width	Approximate Weight	Handles	Wall Thickness
9189	Polypropylene Cover for 8" L x 8" W Tanks	10-1/2"	10-1/2"	1 lbs.	1	1/4"
9190	Polypropylene Cover for 12" L x 6" W Tanks	14-1/2"	8-1/2"	1.1 lbs.	1	1/4"
9125	Polypropylene Cover for 12" L x 12" W Tanks	14-3/8"	14-3/8"	1.4 lbs.	1	1/4"
9191	Polypropylene Cover for 15" L x 12" W Tanks	18-1/2"	15-1/2"	2.6 lbs.	1	1/4"
9192	Polypropylene Cover for 18" L x 8" W Tanks	21-1/2"	11-1/2"	1.6 lbs.	1	1/4"
9126	Polypropylene Cover for 18" L x 12" W Tanks	21-1/2"	15-1/2"	2.2 lbs.	1	1/4"
9128	Polypropylene Cover for 18" L x 18" W Tanks	21-1/2"	21-1/2"	3 lbs.	1	1/4"
9193	Polypropylene Cover for 24" L x 6" W Tanks	27-1/2"	9-1/2"	2.3 lbs.	1	1/4"
9127	Polypropylene Cover for 24" L x 12" W Tanks	27-1/2"	15-1/2"	2.8 lbs.	1	1/4"
9129	Polypropylene Cover for 24" L x 18" W Tanks	27-1/2"	21-1/2"	3.8 lbs.	1	1/4"
9130	Polypropylene Cover for 24" L x 24" W Tanks	28-1/2"	28-1/2"	5 lbs.	1	1/4"
9194	Polypropylene Cover for 30" L x 12" W Tanks	34-1/2"	16-1/2"	4.75 lbs.	1	1/4"
9132	Polypropylene Cover for 30" L x 18" W Tanks	34-1/2"	22-1/2"	6.4 lbs.	2	1/4"
9131	Polypropylene Cover for 30" L x 24" W Tanks	34-1/2"	28-1/2"	8.2 lbs.	2	1/4"
9332	Polypropylene Cover for 30" L x 30" W Tanks	34-1/2"	34-1/2"	9.6 lbs.	2	1/4"
9196	Polypropylene Cover for 36" L x 12" W Tanks	40-1/2"	16-1/2"	5.8 lbs.	1	1/4"
9197	Polypropylene Cover for 36" L x 18" W Tanks	40-1/2"	22-1/2"	7.4 lbs.	2	1/4"
9133	Polypropylene Cover for 36" L x 20" W Tanks	40-1/2"	24-1/2"	8.6 lbs.	2	1/4"
9134	Polypropylene Cover for 36" L x 24" W Tanks	40-1/2"	28-1/2"	9.4 lbs.	2	1/4"
9198	Polypropylene Cover for 36" L x 30" W Tanks	40-1/2"	34-1/2"	11.5 lbs.	2	1/4"
9199	Polypropylene Cover for 36" L x 36" W Tanks	40-1/2"	40-1/2"	13.2 lbs.	2	1/4"

Note: For help selecting a tank or tank accessories for your specific application please contact our technical support department at 800-537-9724 or email them at techsupport@usplastic.com.