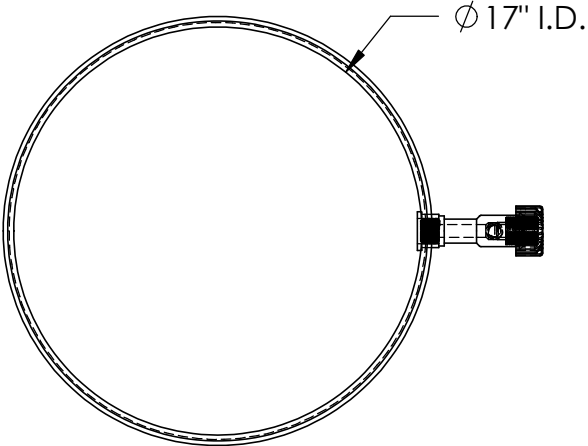
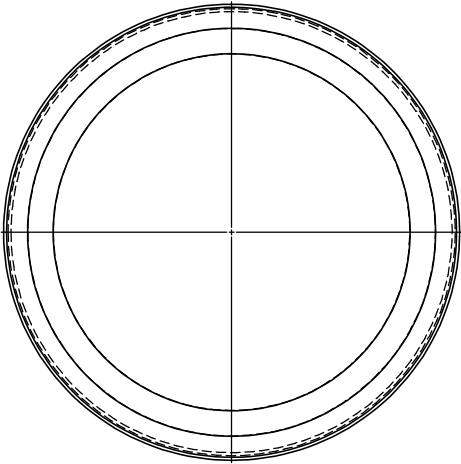


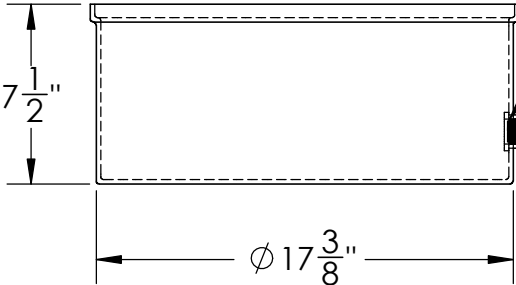
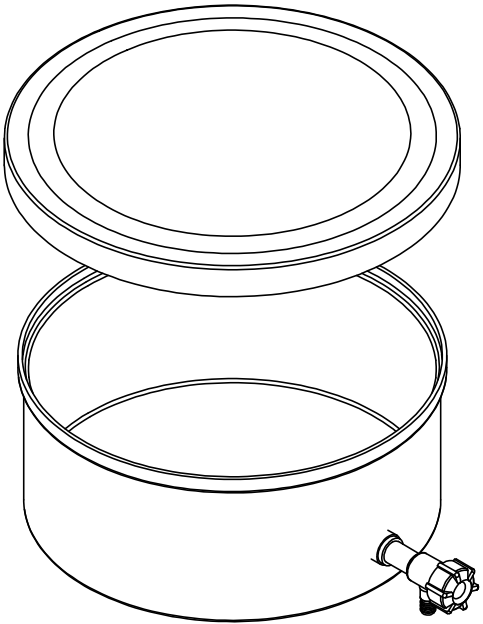
For further detail see tank drawing #10069



TANK

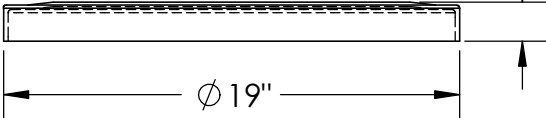


LID



3/4" NPT Fitting

5/8" Discharge



Black Molded Polyethylene
Shallow Tank with Spigot
#14315



1390 Neubrecht Road
Lima, Ohio 45801

STOCK NO.

14315

REV

A

DO NOT SCALE DRAWING

WEIGHT: 8 lbs.

PROPRIETARY AND CONFIDENTIAL
THE INFORMATION CONTAINED IN THIS
DRAWING IS THE SOLE PROPERTY OF
TAMCO. ANY REPRODUCTION IN PART
OR AS A WHOLE WITHOUT THE WRITTEN
PERMISSION OF TAMCO IS PROHIBITED.

MAX. OPERATING TEMP. 140°F
INTERMITTENT SERVICE TO 160°F
SEE CHEMICAL RESISTANCE
CHART FOR COMPATABILITY

DIMENSIONS ARE IN INCHES TOLERANCE: ± 1/4"		NAME	DATE
	DRAWN	CDH	07/08/16
MATERIAL LLDPE - FDA resin	APPROVED	BAT	07/14/16
CAPACITY 6.5 US gal.	COMMENTS: Black UV Stabilized		
GRADUATIONS NO			
NOMINAL WALL THICKNESS 3/16"			