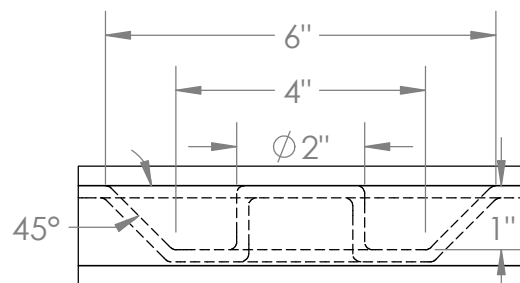
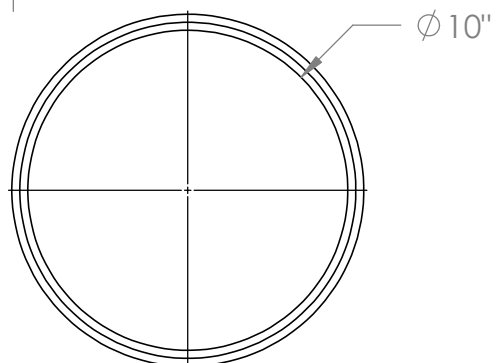


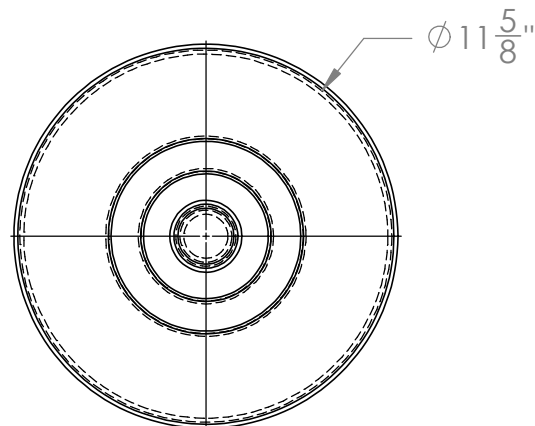
DETAIL A



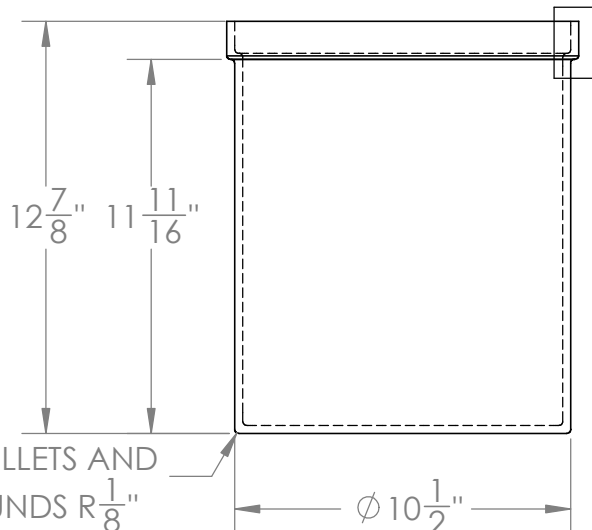
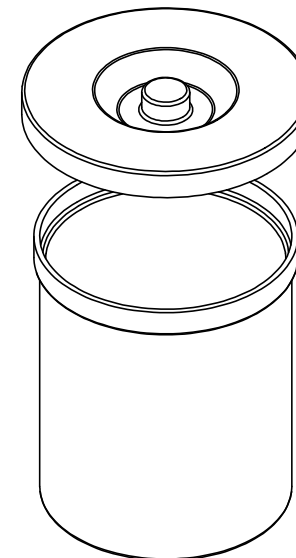
DETAIL B



CROCK



LID



ALL FILLETS AND
ROUNDS R $\frac{1}{8}$ "

DIMENSIONS ARE IN INCHES
TOLERANCE: $\pm 1/4$ "

MATERIAL
LLDPE - FDA resin

CAPACITY
5 US gal.

GRADUATIONS
NO

NOMINAL WALL THICKNESS
 $1/4$ "

DRAWN

NAME

DATE

APPROVED

BAT

06/14/16

07/14/16

COMMENTS:

Black
UV Stabilized

Black
Molded Polyethylene
Crock w/ Cover #14388



1390 Neubrecht Road
Lima, Ohio 45801

STOCK NO.

14388

REV

A

DO NOT SCALE DRAWING

WEIGHT: 5 lbs.

PROPRIETARY AND CONFIDENTIAL

THE INFORMATION CONTAINED IN THIS
DRAWING IS THE SOLE PROPERTY OF
TAMCO. ANY REPRODUCTION IN PART
OR AS A WHOLE WITHOUT THE WRITTEN
PERMISSION OF TAMCO IS PROHIBITED.

MAX. OPERATING TEMP. 140°F
INTERMITTENT SERVICE TO 160°F
SEE CHEMICAL RESISTANCE
CHART FOR COMPATIBILITY