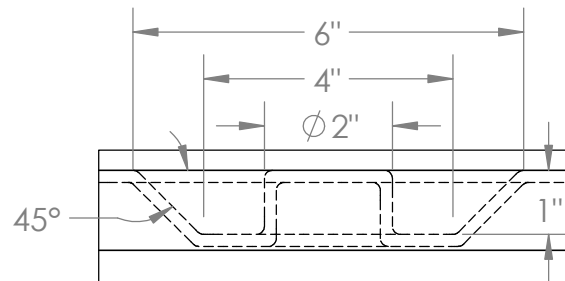
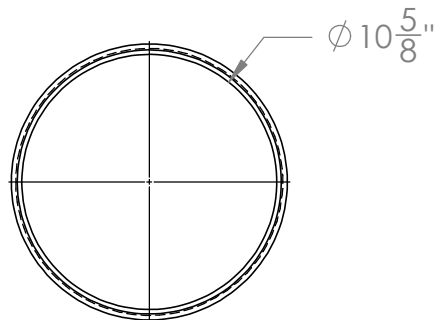


DETAIL A

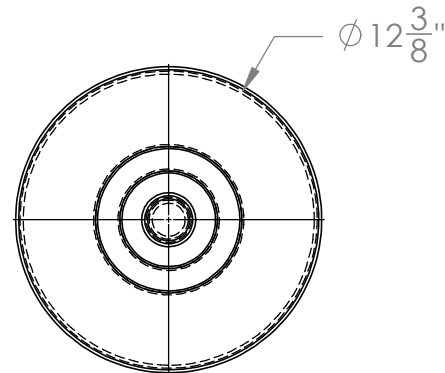


DETAIL B



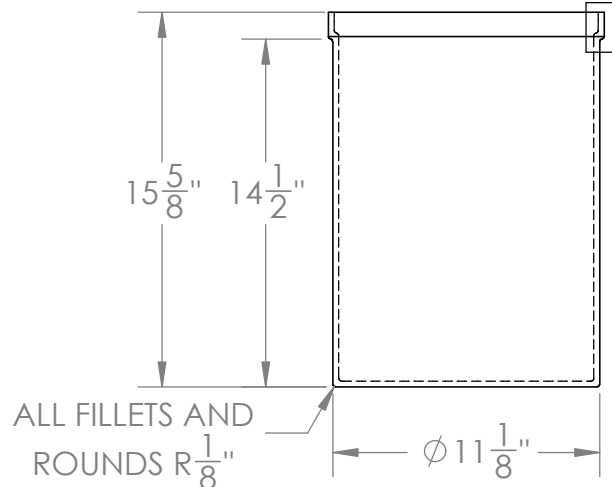
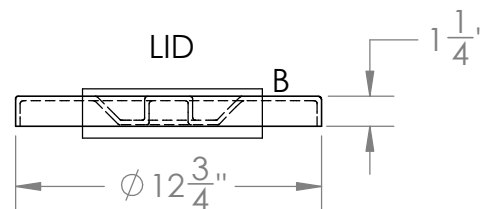
CROCK

A

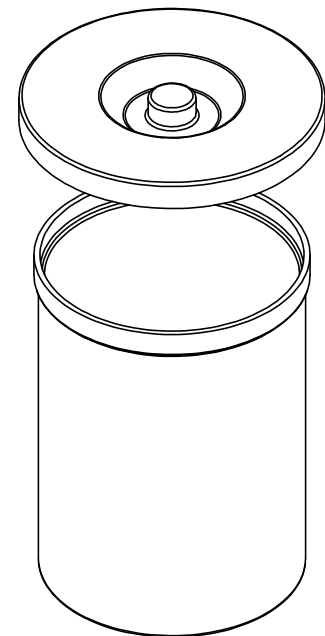


LID

B



ALL FILLETS AND
ROUNDS R $\frac{1}{8}$ "



Black
Molded Polyethylene
Crock w/ Cover #14389



1390 Neubrecht Road
Lima, Ohio 45801

STOCK NO.

14389

REV

A

DO NOT SCALE DRAWING

WEIGHT: 5.5 lbs.

DIMENSIONS ARE IN INCHES TOLERANCE: $\pm 1/4$ "		NAME	DATE
MATERIAL	LLDPE - FDA resin	DRAWN	CDH 06/14/16
CAPACITY	6 US gal.	APPROVED	BAT 07/14/16
GRADUATIONS	NO	COMMENTS: Black UV Stabilized	
NOMINAL WALL THICKNESS	1/4"		

PROPRIETARY AND CONFIDENTIAL

THE INFORMATION CONTAINED IN THIS
DRAWING IS THE SOLE PROPERTY OF
TAMCO. ANY REPRODUCTION IN PART
OR AS A WHOLE WITHOUT THE WRITTEN
PERMISSION OF TAMCO IS PROHIBITED.

MAX. OPERATING TEMP. 140°F
INTERMITTENT SERVICE TO 160°F
SEE CHEMICAL RESISTANCE
CHART FOR COMPATIBILITY