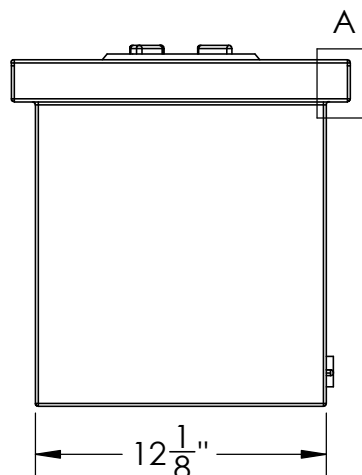
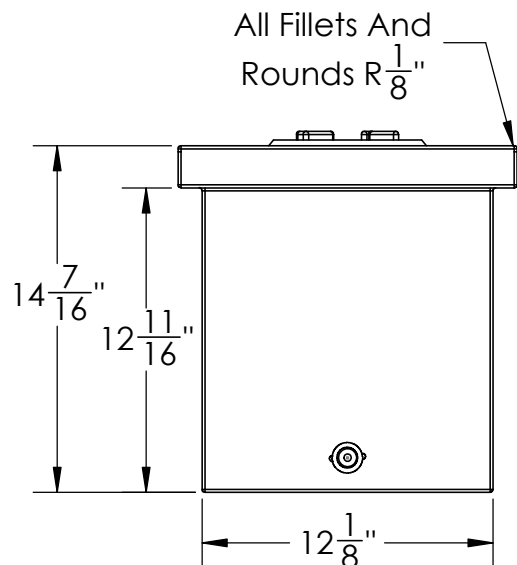
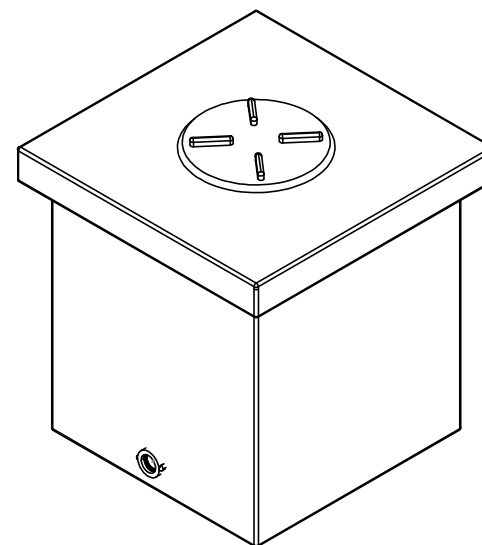


DETAIL A



Black Heavy Duty Polyethylene
Tank w/ Internal Flange #14587



1390 Neubrecht Road
Lima, Ohio 45801

STOCK NO.

14587

REV

A

DO NOT SCALE DRAWING

WEIGHT: 7.5 lbs.

PROPRIETARY AND CONFIDENTIAL

THE INFORMATION CONTAINED IN THIS
DRAWING IS THE SOLE PROPERTY OF
TAMCO. ANY REPRODUCTION IN PART
OR AS A WHOLE WITHOUT THE WRITTEN
PERMISSION OF TAMCO IS PROHIBITED.

MAX. OPERATING TEMP. 140°F
INTERMITTENT SERVICE TO 160°F
SEE CHEMICAL RESISTANCE
CHART FOR COMPATIBILITY

DIMENSIONS ARE IN INCHES
TOLERANCE: $\pm 1/4"$
WALL THICKNESS: $\pm 20\%$

MATERIAL
LLDPE - FDA resin

CAPACITY
6 US gal.

GRADUATIONS
NO

NOMINAL WALL THICKNESS
3/16"

	NAME	DATE
DRAWN	CDH	06/13/16
REVISED	JMP	01/08/18
APPROVED	BAT	07/14/16

COMMENTS:

Black
UV Stabilized